



For personal use only

To	Company Announcements Office	Facsimile	1300 135 638
Company	ASX Limited	Date	22 October 2013
From	Helen Hardy	Pages	8
Subject	CONTACT ENERGY - MONTHLY OPERATIONAL DATA SEPTEMBER 2013		

Attached herewith is a copy of an announcement released to the NZX by Contact Energy today.

Origin Energy holds 53.09% of quoted ordinary shares in Contact Energy Limited.

Regards

A handwritten signature in black ink, appearing to read "Helen Hardy".

Helen Hardy
Company Secretary

02 8345 5441 - helen.hardy@originenergy.com.au

ContactTM

Monthly Operational Data

For the month ended 30 September 2013

September 2013



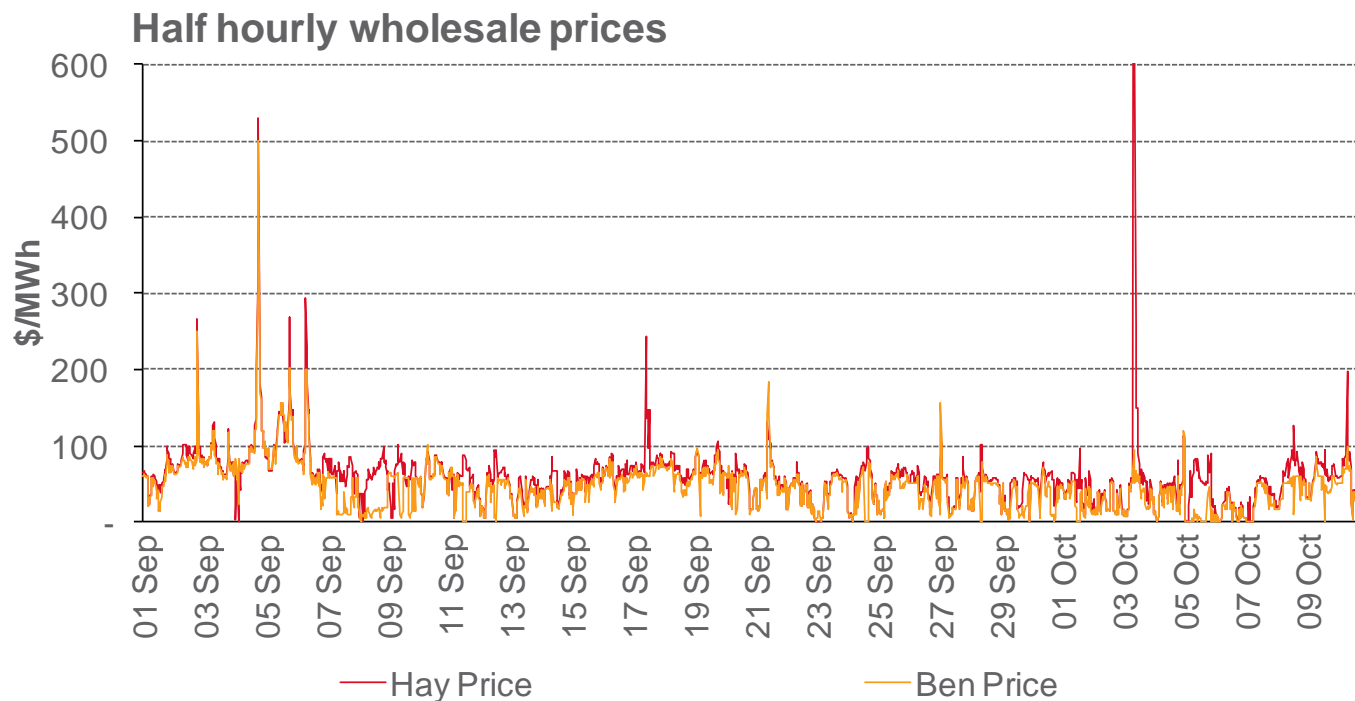
Highlights for September 2013

- **Hydro storage as at 30 September: South Island 125% of mean, North Island 100% of mean (p4)**
- **Average Haywards wholesale price for September 2013: \$62/MWh (p3)**
- **Otahuhu futures settlement wholesale price for 4th quarter 2013 (ASX) (p4):**
 - As at 19 October: \$51/MWh
 - As at 30 September: \$51/MWh
 - As at 31 August: \$57/MWh

Wholesale electricity prices

For personal use only

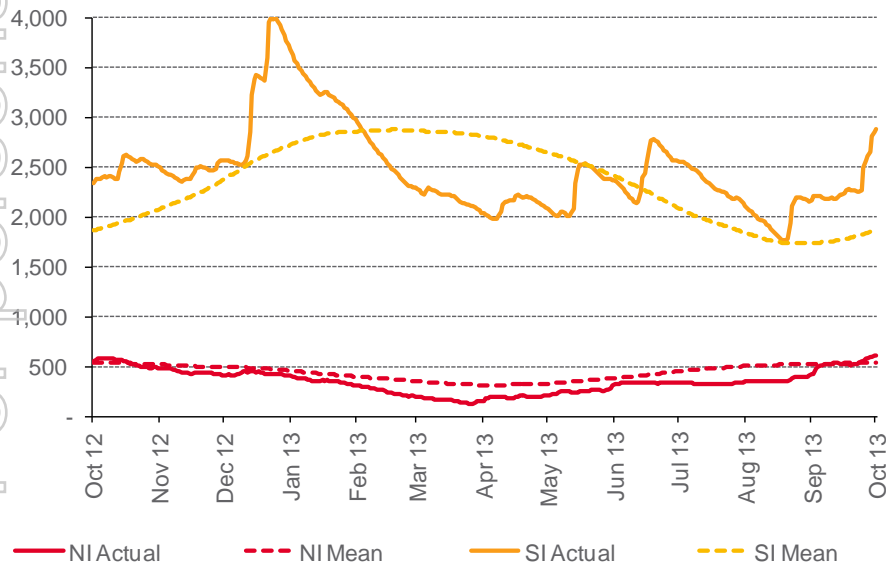
- The average price at Haywards (North Island) for the month of September 2013 was \$62/MWh while the average price at Benmore (South Island) was \$51/MWh.
- The average Haywards price from 1 October to 19 October 2013 was \$44/MWh. The average Benmore price over this period was \$28/MWh.



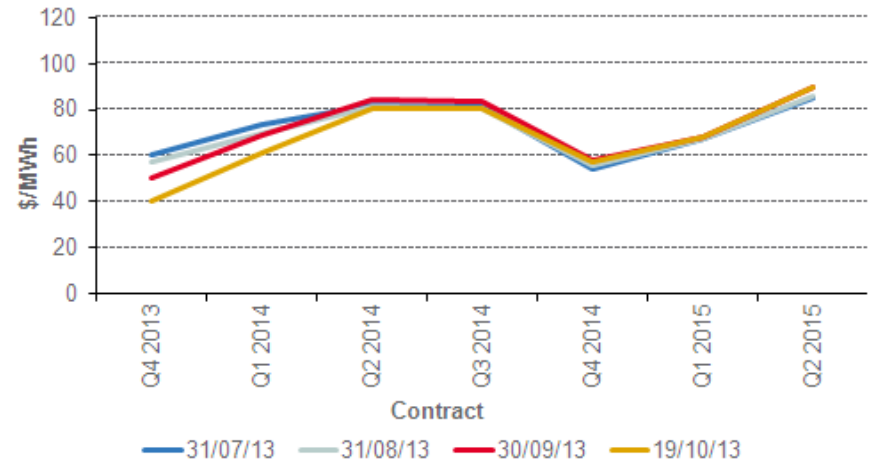
Storage levels and wholesale electricity prices

- At 30 September 2013, South Island storage was 125% of mean (31 August: 109%) and North Island storage was 100% of mean (31 August: 69%)
- As at 19 October 2013, storage was:
 - South Island: 154% of mean
 - North Island: 113% of mean

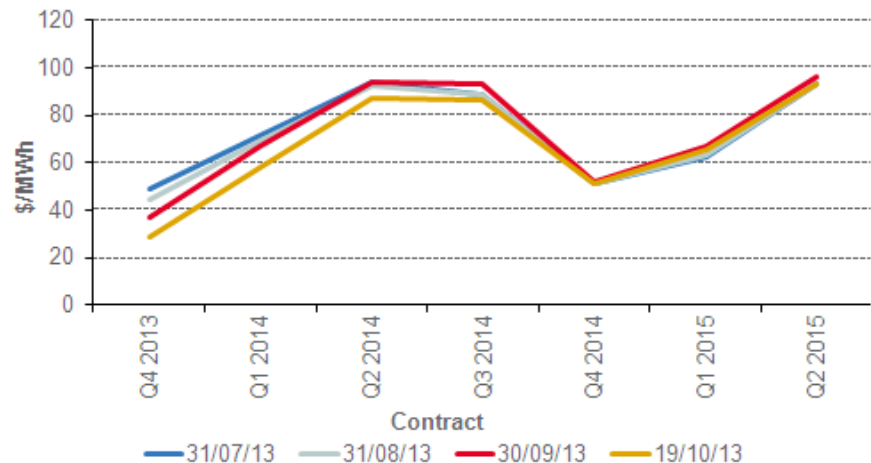
Hydro storage



Otahuhu futures settlement price (ASX settlement)



Benmore futures settlement price (ASX settlement)

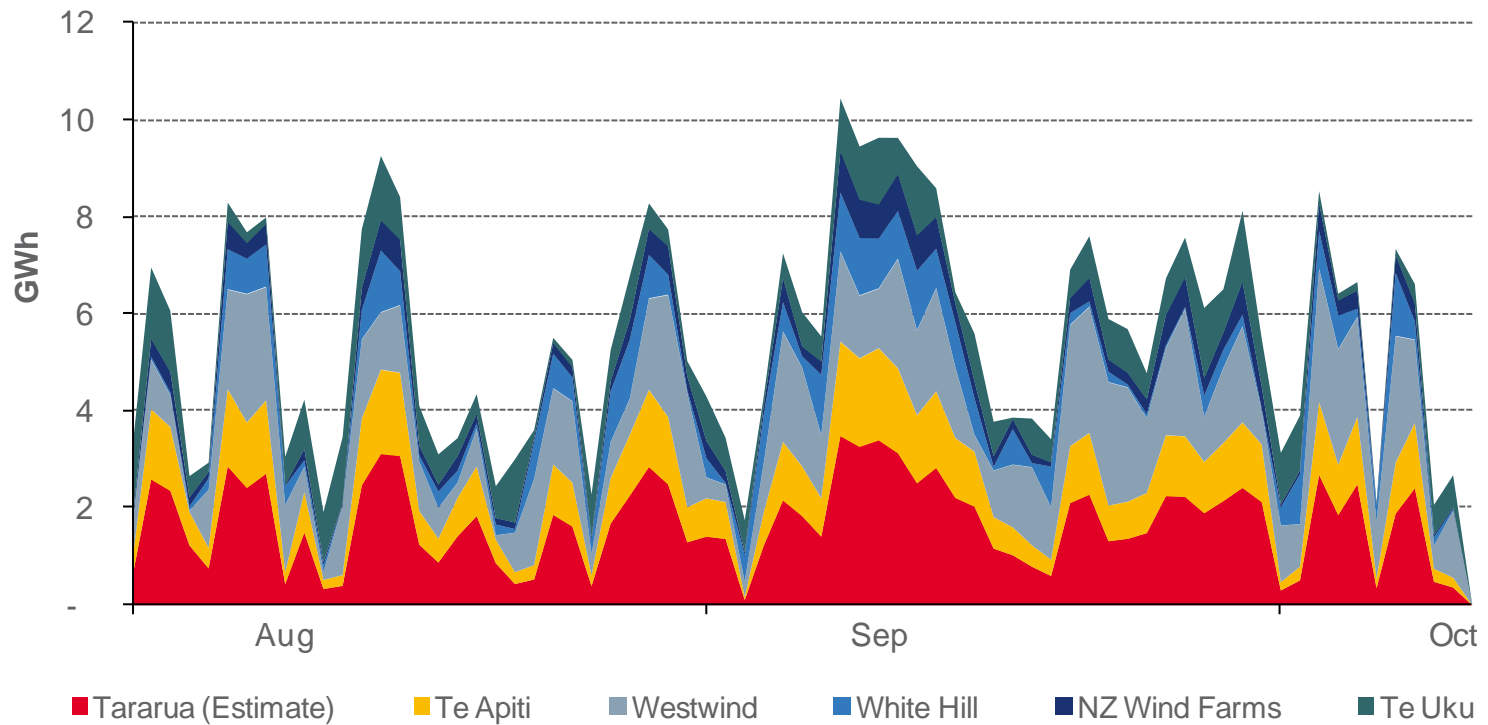


For personal use only

Wind generation

For personal use only

Daily wind generation (SCADA)



Monthly demand comparison

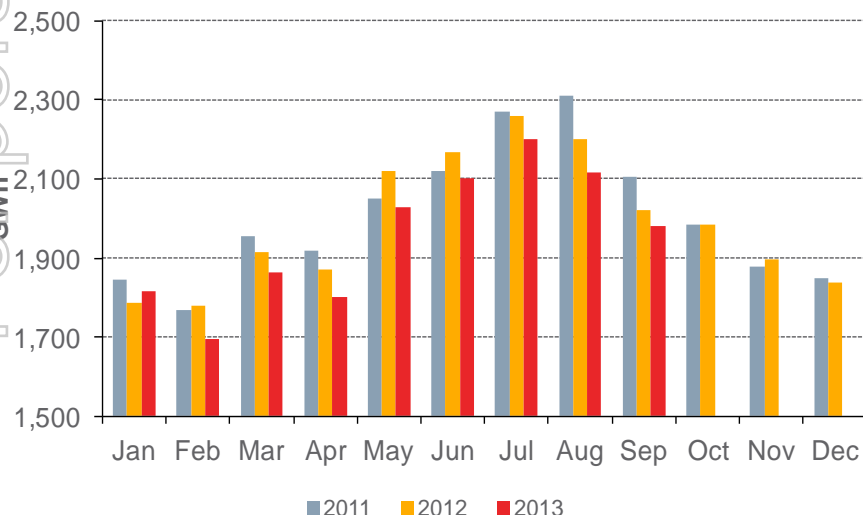
• **NIWA's national climate summary for September 2013 reports:**

- The New Zealand national average temperature in September was 11°C (0.6°C above the 1971-2000 July average)

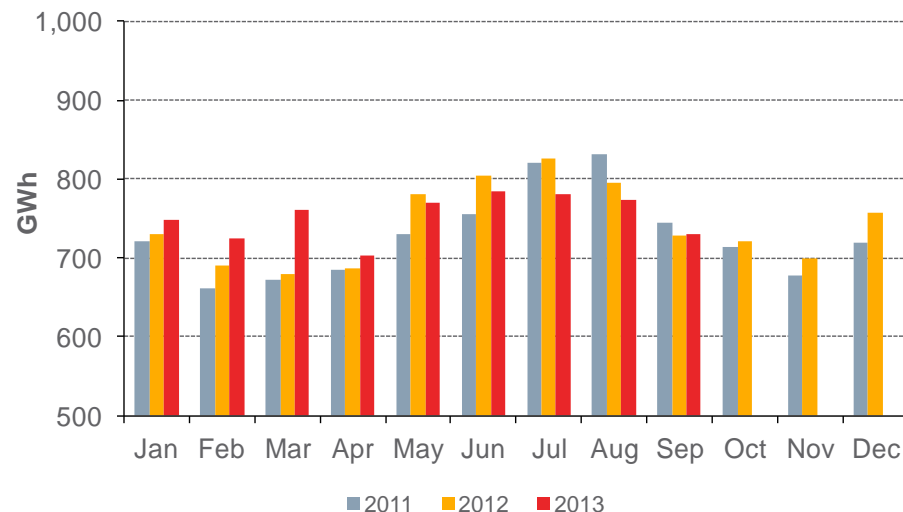
Demand	12 months to date			Growth rate		September demand			Growth rate	
	GWh			% p.a.		GWh			% p.a.	
	2013	2012	2011	1 year	2 year	2013	2012	2011	1 year	2 year
North Island	23,323	23,831	24,147	(2.1%)	(1.7%)	1,983	2,021	2,107	(1.9%)	(3.0%)
South Island excluding Tiwai	8,952	8,832	8,952	1.4%	0.0%	730	728	744	0.3%	(0.9%)
Total	32,275	32,663	33,099	(1.2%)	(1.3%)	2,713	2,749	2,851	(1.3%)	(2.4%)

Source: SCADA data

North Island



South Island excluding Tiwai



For personal use only

Contact Netback, Net Purchase Cost and LPG Data

For personal use only

Data	Measure	The month ended 30 September 2013	The month ended 30 September 2012	The month ended 31 August 2013	Three months ended 30 September 2013	Three months ended 30 September 2012	
Netback	Mass market electricity sales	GWh	344	365	374	1,149	1,257
	Commercial & industrial electricity sales	GWh	384	339	380	1,120	993
	Retail gas sales	GWh	65	67	70	222	244
	Steam sales	GWh	68	68	68	163	162
	Total retail sales	GWh	861	839	893	2,654	2,656
	Average electricity sales price	\$/MWh	180.70	181.14	189.22	190.67	191.68
	Electricity direct pass thru costs	\$/MWh	72.12	73.13	77.20	73.41	73.26
	Electricity and gas cost to serve	\$/MWh	10.55	11.35	11.23	10.73	10.61
	Netback	\$/MWh	87.31	85.05	89.04	93.50	93.99
	Actual electricity line losses	%	0%	6%	7%	3%	4%
	Retail gas sales	PJ	0.2	0.3	0.3	0.8	0.8
	Electricity customer numbers ¹		439,000	442,500	438,000	438,500	443,000
Gas customer numbers ¹		62,500	63,000	62,000	62,000	63,000	
Net Purchase Cost	Thermal generation	GWh	294	367	400	1,051	1,086
	Geothermal generation	GWh	177	170	194	565	572
	Hydro generation	GWh	309	343	360	1,101	863
	Spot market generation	GWh	780	880	953	2,717	2,521
	Swaption	GWh	-	-	-	-	116
	Spot electricity purchases	GWh	700	735	798	2,312	2,322
	CfD sales	GWh	34	75	46	204	232
	GWAP	\$/MWh	57.04	45.18	56.17	55.63	62.42
	LWAP	\$/MWh	62.11	50.55	61.88	60.16	68.05
	LWAP/GWAP	%	109%	112%	110%	108%	109%
	Gas used in internal generation	PJ	2.5	3.1	3.3	8.8	9.3
	Wholesale gas sales	PJ	0.4	0.3	0.2	0.6	0.8
	Gas storage net movement	PJ	0.1	(0.0)	0.2	0.7	(0.3)
	Unit generation cost	\$/MWh	49.52	49.84	48.51	46.42	52.10
	Net purchase cost	\$/MWh	42.43	44.60	44.90	40.61	48.53
LPG	LPG sales	tonnes	5,633	6,084	6,162	18,796	20,122
	LPG customer numbers (includes franchises) ¹		65,000	62,500	65,000	65,000	62,000

¹ Data has been rounded to the nearest 500 and reflects numbers as at month end.