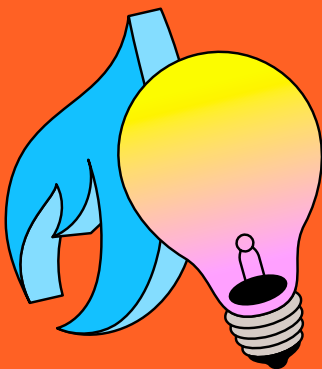


# Current residential electricity & gas tariffs



Price sheets for:

Victoria

South Australia

Queensland

Australian Capital Territory

New South Wales

Effective January 2026

# Thanks for choosing us

These are the Price Sheets which include fees and charges for sites supplied under our Multiple Site Agreement. These Price Sheets form part of that Agreement.

## Contents

<b>Victoria</b>	<b>3</b>
Origin Basic – electricity tariffs	5
Origin Basic – gas tariffs	9
Connection fees – electricity	13
Connection fees – gas	13
<b>South Australia</b>	
Origin Basic – no exit fees – electricity tariffs	15
Origin Basic – no exit fees – gas tariffs	17
Connection fees – electricity	17
<b>Queensland</b>	
Origin Basic – electricity tariffs	19
Origin Basic – gas tariffs	23
Connection fees – electricity	25
Connection fees – gas	25
<b>Australian Capital Territory</b>	
Origin Basic – electricity tariffs	27
Connection fees – electricity	29
Connection fees – gas	30
Origin Basic – gas tariffs	30
<b>New South Wales</b>	
Origin Basic – electricity tariffs	31
Origin Basic – gas tariffs	39
Connection fees – electricity	41
Connection fees – gas	41
<b>Other fees</b>	<b>43</b>
<b>Disconnection fees – all zones</b>	<b>44</b>

Origin Basic – electricity tariffs

Victoria

Zone	Tariff Description	Price List	Units	Rate (incl. GST)
Powercor	Residential Peak Anytime (GD/GR)	Supply Charge	c/day	136.8400
		Peak Usage	c/kWh	30.0850
Powercor	Residential Peak Plus Dedicated Circuit	Supply Charge	c/day	136.840
		Peak Usage	c/kWh	30.0850
		Off-Peak (Dedicated Circuit)	c/kWh	21.2190
Powercor	Residential Two Period Time of Use	Supply Charge	c/day	136.8400
		Peak Usage (3pm to 9pm local time, all days)	c/kWh	40.3997
		Off Peak - All other Usage	c/kWh	23.6500
Citipower	Residential Peak Anytime (GD/GR)	Supply Charge	c/day	124.0690
		Peak Usage	c/kWh	27.3240
Citipower	Residential Peak Plus Dedicated Circuit	Supply Charge	c/day	124.0690
		Peak Usage	c/kWh	27.3240
		Off-Peak (Dedicated Circuit)	c/kWh	20.1190
Citipower	Residential Two Period Time of Use	Supply Charge	c/day	124.0690
		Peak Usage (3pm to 9pm local time, all days)	c/kWh	36.3297
		Off Peak - All other Usage	c/kWh	22.0550
Jemena	Residential Peak Anytime (GD/GR)	Supply Charge	c/day	123.0097
		Peak Usage	c/kWh	29.7198
Jemena	Residential Peak Plus Dedicated Circuit	Supply Charge	c/day	123.0097
		Peak Usage	c/kWh	29.7198
		Off-Peak (Dedicated Circuit)	c/kWh	23.1396
Jemena	Residential Two Period Time of Use	Supply Charge	c/day	123.0097
		Peak Usage (3pm to 9pm local time, all days)	c/kWh	37.6090
		Off Peak - All other Usage	c/kWh	23.6797

Origin Basic – electricity  
tariffs continued

Zone	Tariff Description	Price List	Units	Rate (incl. GST)
United Energy	Residential Peak Anytime (GD/GR)	Supply Charge	c/day	116.4790
		Peak Usage	c/kWh	28.8398
United Energy	Residential Peak Plus Dedicated Circuit	Supply Charge	c/day	116.4790
		Peak Usage	c/kWh	28.8398
		Off-Peak (Dedicated Circuit)	c/kWh	21.0650
United Energy	Residential Two Period Time of Use	Supply Charge	c/day	116.4790
		Peak Usage (3pm to 9pm local time, all days)	c/kWh	38.3680
		Off Peak - All other Usage	c/kWh	22.9900
Ausnet Services	Residential Peak Anytime (GD/GR)	Supply Charge	c/day	141.4600
		Peak Usage first 11.1781 kWh per day	c/kWh	34.7699
		Remaining Usage	c/kWh	34.7699
Ausnet Services	Residential Peak Plus Dedicated Circuit	Supply Charge	c/day	141.4600
		Peak Usage first 11.1781 kWh per day	c/kWh	34.7699
		Remaining Usage	c/kWh	34.7699
		Off-Peak (Dedicated Circuit)	c/kWh	23.9899
Ausnet Services	Residential Two Period Time of Use	Supply Charge	c/day	141.4600
		Peak Usage (3pm to 9pm local time, all days)	c/kWh	46.8160
		Off Peak - All other Usage	c/kWh	23.9899

Origin Basic – gas tariffs

Zone	Price List	Units	Rate (incl. GST)	Season Dates
Australian Gas Networks North	Supply Charge	c/day	97.8670	
	Usage first 100 MJ per day	c/MJ	4.1470	
	Usage next 100 MJ per day	c/MJ	4.0370	
	Remaining Usage	c/MJ	3.5970	
Australian Gas Networks Central 1	Supply Charge	c/day	97.867	
	Usage first 100 MJ per day	c/MJ	4.1690	
	Usage next 100 MJ per day	c/MJ	4.0370	
	Remaining Usage	c/MJ	3.5970	
Multinet Main 1	Supply Charge	c/day	116.633	
	Peak Period			1 May to 31 October
	Usage first 100 MJ per day	c/MJ	4.4990	
	Remaining Usage	c/MJ	3.0030	
	Off-Peak Period			1 November to 30 April
	Usage first 100 MJ per day	c/MJ	4.4990	
Australian Gas Networks Cardinia	Supply Charge	c/day	86.6470	
	All Consumption	c/MJ	3.8390	
Australian Gas Networks Murray (Vic)	Supply Charge	c/day	97.0640	
	All Consumption	c/MJ	4.2570	
Australian Gas Networks Mildura	Supply Charge	c/day	101.838	
	Usage first 50 MJ per day	c/MJ	5.6980	
	Remaining Usage	c/MJ	4.0480	
Ausnet Services Central 2	Supply Charge	c/day	116.633	
	Peak Period			1 June to 30 September
	Peak Usage	c/MJ	3.8060	
	Off-Peak Period			1 October to 31 May
Australian Gas Networks Central 2	Supply Charge	c/day	97.8670	
	Usage first 100 MJ per day	c/MJ	4.1690	
	Usage next 100 MJ per day	c/MJ	4.0370	
	Remaining Usage	c/MJ	3.5970	
Ausnest Services West	Supply Charge	c/day	116.633	
	Peak Period			1 June to 30 September
	Peak Usage	c/MJ	3.6960	
	Off-Peak Period			1 October to 31 May
Ausnest Services Central 1	Off-Peak Usage	c/MJ	3.6960	
	Supply Charge	c/day	116.633	
	Peak Period			1 June to 30 September
	Peak Usage	c/MJ	3.8060	
	Off-Peak Period			1 October to 31 May
	Off-Peak Usage	c/MJ	3.8060	

Origin Basic – gas tariffs continued

Zone	Price List	Units	Rate (incl. GST)	Season Dates
Multinet Main 2	Supply Charge	c/day	116.633	1 May to 31 October
	Peak Period			
	Usage first 100 MJ per day	c/MJ	4.4990	
	Remaining Usage	c/MJ	3.0030	1 November to 30 April
	Off-Peak Period			
	Usage first 100 MJ per day	c/MJ	4.4990	
Australian Gas Networks Bairnsdale	Supply Charge	c/day	97.460	
	All Consumption	c/MJ	4.4000	
Multinet Yarra Valley	Supply Charge	c/day	95.854	1 May to 31 October
	Peak Period			
	Usage first 100 MJ per day	c/MJ	4.9390	
	Remaining Usage	c/MJ	3.5750	1 November to 30 April
	Off-Peak Period			
	Usage first 100 MJ per day	c/MJ	4.9390	
Ausnet Services Adjoining Central	Supply Charge	c/day	116.633	1 June to 30 September
	Peak Period			
	Usage first 100 MJ per day	c/MJ	4.5760	
	Remaining Usage	c/MJ	3.6960	1 October to 31 May
	Off-Peak Period			
	Usage first 100 MJ per day	c/MJ	4.5760	
Ausnet Services Adjoining West	Supply Charge	c/day	116.633	1 June to 30 September
	Peak Period			
	Usage first 100 MJ per day	c/MJ	4.5760	
	Remaining Usage	c/MJ	3.6960	1 October to 31 May
	Off-Peak Period			
	Usage first 100 MJ per day	c/MJ	4.5760	
Multinet Gippsland	Supply Charge	c/day	95.854	1 May to 31 October
	Peak Period			
	Usage first 100 MJ per day	c/MJ	4.9390	
	Remaining Usage	c/MJ	3.5750	1 November to 30 April
	Off-Peak Period			
	Usage first 100 MJ per day	c/MJ	4.9390	
	Remaining Usage	c/MJ	3.5750	

Connection fees – electricity

Victoria

	Powercor	AusNet Services	Jemena	Citipower	United Energy
Single Phase BTS Pole – (coincidental disc)	\$688.71	\$671.51	\$759.96	\$684.38	\$681.14
Single Phase BTS Pole – (independent disc)	\$688.71	N/A	\$759.96	\$684.38	N/A
Multi Phase BTS Pole (coincidental disc)	\$852.96	\$763.13	\$934.96	\$817.97	\$681.14
Multi Phase BTS Pole (independent disc)	\$852.96	N/A	\$934.96	\$817.97	N/A
<b>Single Phase Builders Supply in Perm Position</b>	<b>\$688.71</b>	<b>\$671.51</b>	<b>\$759.96</b>	<b>\$684.38</b>	<b>\$681.14</b>
Overhead – Single Phase NON off peak	\$688.71	\$671.51	\$759.96	\$684.38	\$681.14
Overhead – Single Phase off peak	\$688.71	\$671.51	\$759.96	\$684.38	\$681.14
Underground – Single Phase NON off peak	\$688.71	\$295.11	\$759.96	\$684.38	\$681.14
Underground – Single Phase off peak	\$688.71	\$295.11	\$759.96	\$684.38	\$681.14
Overhead – Multi Phase	\$852.96	\$763.13	\$934.96	\$817.97	\$681.14
Underground – Multi Phase	\$852.96	\$467.72	\$934.96	\$817.97	\$681.14
<b>De-Energisation Charge (Final Read charge)</b>	<b>\$76.53</b>	<b>\$46.89</b>	<b>\$95.65</b>	<b>\$49.32</b>	<b>\$67.45</b>
Wasted Service Truck Visit	\$472.90	\$284.36	\$636.10	\$463.73	\$419.74
Service Truck Visit	\$920.82	\$764.57	\$573.03	\$792.34	\$796.11

NOTE: These charges are “pass through” charges from the relevant distribution company.

For a full list of fees that may apply, please visit the relevant Distributor’s website.

Connection fees – gas

Victoria

Connection fee

Australian Gas Networks	\$2,372.70
AusNet Services	\$2,156.00
Multinet	\$2,926.00

Account Establishment fee	\$0.00*
Incomplete Meter Fix (Wasted Site Visit)	\$121.00

\*Charges may apply and are subject to network site inspection.

Origin Basic – no exit fees  
electricity tariffs

South Australia

Tariff Type	Price List	Units	Rate (incl. GST)
Domestic Light/Power	<b>Supply Charge</b>	<b>c/day</b>	<b>113.509</b>
	Peak Usage first 10.9589 kWh per day	c/kWh	47.157
	Remaining Usage	c/kWh	50.963
Domestic Light/Power with Off Peak Controlled Load	<b>Supply Charge</b>	<b>c/day</b>	<b>113.509</b>
	Peak Usage first 10.9589 kWh per day	c/kWh	47.157
	Remaining Usage	c/kWh	50.963
	All consumption (Controlled Load)	c/kWh	23.397
Seasonal Time Of Use	<b>Supply Charge</b>	<b>c/day</b>	<b>116.050</b>
	Peak Usage (Peak - 6am - 10am, 4pm - midnight)	c/kWh	59.653
	Shoulder Usage (10am - 4pm)	c/kWh	29.425
	Off Peak - All other times (Midnight - 6am all days)	c/kWh	35.233
Seasonal Time Of Use with Off Peak Controlled Load	<b>Supply Charge</b>	<b>c/day</b>	<b>116.050</b>
	Peak Usage (Peak - 6am - 10am, 4pm - midnight)	c/kWh	59.653
	Shoulder Usage (10am - 4pm)	c/kWh	29.425
	Off Peak - All other times (Midnight - 6am all days)	c/kWh	35.233
	All consumption (Controlled Load)	c/kWh	23.397



Origin Basic – no exit fees  
gas tariffs

South Australia

Tariff Type	Zone	Price List	Units	Rate (incl. GST)
Residential	Adelaide	<b>Supply Charge</b>	<b>c/day</b>	<b>99.825</b>
		Usage first 49.3151 MJ per day	c/MJ	6.600
		Remaining Usage	c/MJ	3.454
Residential	Mt Gambier	<b>Supply Charge</b>	<b>c/day</b>	<b>99.825</b>
		Usage first 49.3151 MJ per day	c/MJ	6.600
		Remaining Usage	c/MJ	3.454
Residential	Port Pirie	<b>Supply Charge</b>	<b>c/day</b>	<b>99.825</b>
		Usage first 49.3151 MJ per day	c/MJ	6.600
		Remaining Usage	c/MJ	3.454
Residential	Riverland	<b>Supply Charge</b>	<b>c/day</b>	<b>99.825</b>
		Usage first 49.3151 MJ per day	c/MJ	6.600
		Remaining Usage	c/MJ	3.454
Residential	Whyalla	<b>Supply Charge</b>	<b>c/day</b>	<b>99.825</b>
		Usage first 49.3151 MJ per day	c/MJ	6.600
		Remaining Usage	c/MJ	3.454

Connection fees – electricity

South Australia

New connection – Temporary on existing pole/pit/pillar	\$1,666.50
New connection – Temporary new pole/pit/pillar required	Quoted
Wasted Site Visit	Quoted

Metering charges

Charges may be applied when the customer requests a change, removal, or installation of an electricity meter. It is the cost of the fees we directly incur from Meter Service Providers for the works.

Connection fees – gas

South Australia

* Charges may apply and are subject to network site inspection.	\$0.00
Incomplete Meter Fix (Wasted Visit)	\$81.40

Origin Basic – electricity tariffs  
Queensland

Zone	Tariff Type	Tariff Description	Price List	Units	Rate (incl. GST)
Energex	TARIFF11	Residential (Lighting, Power & Continuous Water Heating)	Supply Charge	c/day	142.8680
			Peak Usage	c/kWh	35.2440
Energex	TARIFF1131	Residential (Lighting, Power & Continuous Water Heating) with Night Rate (Super Economy)	Supply Charge	c/day	142.8680
			Peak Usage	c/kWh	35.2440
			T31-Night Rate (Super Economy)	c/kWh	17.7650
			Supply Charge T31-Night Rate (Super Economy)	c/day	3.9710
Energex	TARIFF1133	Residential (Lighting, Power & Continuous Water Heating) with Controlled Supply (Economy)	Supply Charge	c/day	142.8680
			Peak Usage	c/kWh	35.2440
			T33-Controlled Supply (Economy)	c/kWh	17.7650
			Supply Charge T33-Controlled Supply (Economy)	c/day	3.9710
Energex	T113133	Residential (Lighting, Power & Continuous Water Heating) with Night Rate (Super Economy) & Controlled Supply (Economy)	Supply Charge	c/day	142.8680
			Peak Usage	c/kWh	35.2440
			T31-Night Rate (Super Economy)	c/kWh	17.7650
			Supply Charge T31-Night Rate (Super Economy)	c/day	3.9710
			T33-Controlled Supply (Economy)	c/kWh	17.7650
			Supply Charge T33-Controlled Supply (Economy)	c/day	3.9710
Energex	TARIFF12	Residential (Lighting, Power & Continuous Water Heating) Time of Use	Supply Charge	c/day	148.5880
			Peak Usage (Weekdays 4pm-8pm)	c/kWh	47.2230
			Shoulder Usage (Weekdays 7am-4pm, 8pm-10pm, Weekends 7am-10pm)	c/kWh	34.0450
			Off-Peak Usage (Weekdays & Weekends 10pm-7am)	c/kWh	28.6550

Origin Basic – electricity tariffs continued  
Queensland

Zone	Tariff Type	Tariff Description	Price List	Units	Rate (incl. GST)
Energex	Time of Use	Residential (Lighting, Power & Continuous Water Heating) Time of Use	<b>Supply Charge</b>	<b>c/day</b>	<b>123.266</b>
			Peak Usage 4pm-9pm daily	c/kWh	49.984
			Shoulder Usage 9pm-11am daily	c/kWh	32.395
			Off-Peak Usage - All other time	c/kWh	28.259
Ergon	TARIFF11	Residential (Lighting, Power & Continuous Water Heating)	<b>Supply Charge</b>	<b>c/day</b>	<b>168.8423</b>
			Peak Usage	c/kWh	32.9725
Ergon	TARIFF1131	Residential (Lighting, Power & Continuous Water Heating)	<b>Supply Charge</b>	<b>c/day</b>	<b>168.8423</b>
			Peak Usage	c/kWh	32.9725
			T31-Night Rate (Super Economy)	c/kWh	18.118
			Supply Charge T31-Night Rate (Super Economy)	<b>c/day</b>	<b>0.000</b>
Ergon	TARIFF1133	Residential (Lighting, Power & Continuous Water Heating)	<b>Supply Charge</b>	<b>c/day</b>	<b>168.8423</b>
			Peak Usage	c/kWh	32.9725
			T33-Controlled Supply (Economy)	c/kWh	19.1345
			<b>Supply Charge T33-Controlled Supply (Economy)</b>	<b>c/day</b>	<b>0.000</b>
Ergon	TARIFF12B	Residential Time of Use	<b>Supply Charge</b>	<b>c/day</b>	<b>148.8344</b>
			Peak Usage (4pm-9pm daily)	c/kWh	45.7116
			Off-Peak Usage (9am-4pm daily)	c/kWh	22.6798
			Shoulder Usage (All other time)	c/kWh	28.0346

Origin Basic – gas tariffs  
Queensland

Zone	Tariff Type	Tariff Description	Price List	Units	Rate (incl. GST)
Australian Gas Networks Brisbane	Residential	Residential Gas Customers	<b>Supply Charge</b>	<b>c/day</b>	<b>89.4520</b>
			Usage first 8.1973 MJ per day	c/MJ	7.9860
			Usage next 19.2000 MJ per day	c/MJ	6.0170
			Remaining Usage	c/MJ	4.6310
Australian Gas Networks Northern	Residential	Residential Gas Customers	<b>Supply Charge</b>	<b>c/day</b>	<b>91.245</b>
			Usage first 8.1973 MJ per day	c/MJ	8.679
			Usage next 19.2000 MJ per day	c/MJ	6.105
			Remaining Usage	c/MJ	4.279
Australian Gas Networks Wide Bay	Residential	Residential Gas Customers	<b>Supply Charge</b>	<b>c/day</b>	<b>35.024</b>
			Usage first 200 MJ per day	c/MJ	5.093
			Remaining Usage	c/MJ	4.719
APT Allgas	Residential	Residential Gas	<b>Supply Charge</b>	<b>c/day</b>	<b>143.902</b>
			Usage first 25.5123 MJ per day	c/MJ	4.807
			Remaining Usage	c/MJ	4.477

## Connection fees – electricity

Queensland

Zone	Tariff Type	Rate
New Connection QLD Energex	Temporary connection	\$577.86
New Connection QLD Ergon	Temporary connection short-term	\$577.86
New Connection QLD Ergon	Temporary connection	\$491.10
Wasted Site Visit QLD Energex	Wasted Site Visit	\$358.86
Wasted Site Visit QLD Ergon	Wasted Site Visit	\$149.64

### Metering charges

Charges may be applied when the customer requests a change, removal, or installation of an electricity meter. It is the cost of the fees we directly incur from Meter Service Providers for the works.

## Connection fees – gas

Queensland

* Charges may apply and are subject to network site inspection	\$0.00*
<b>QLD AGN Incomplete Meter Fix</b>	<b>\$81.40</b>

# Origin Basic – electricity tariffs

## Australian Capital Territory

Zone	Tariff Description	Price List	Units	Rate (incl. GST)
EVO Energy	Domestic Rate 1	Supply Charge	c/day	146.784
		Peak Usage	c/kWh	35.057
EVO Energy	Domestic Rate 1 with Off Peak 1	Supply Charge	c/day	146.784
		Peak Usage	c/kWh	35.057
		Off-Peak Usage	c/kWh	24.288
EVO Energy	Domestic Rate 1 with Off Peak 2	Supply Charge	c/day	146.784
		Peak Usage	c/kWh	35.057
		Off-Peak Usage	c/kWh	24.288
EVO Energy	Domestic Rate 2	Supply Charge	c/day	186.714
		First 60 kWh per day	c/kWh	32.670
		Balance	c/kWh	37.818
EVO Energy	Domestic Rate 2 with Off Peak 1	Supply Charge	c/day	186.714
		Peak Usage first 60 kWh per day	c/kWh	32.670
		Remaining Usage	c/kWh	37.818
EVO Energy	Domestic Rate 2 with Off Peak 2	Off-Peak Usage	c/kWh	24.288
		Supply Charge	c/day	186.714
		Peak Usage first 60 kWh per day	c/kWh	32.670
EVO Energy	Domestic Rate 2 with Off Peak 2	Remaining Usage	c/kWh	37.818
		Off-Peak Usage	c/kWh	24.288
		Supply Charge	c/day	251.735
EVO Energy	Domestic Rate 3 (Heat Pump)	Peak Usage first 165 kWh per day	c/kWh	28.776
		Remaining Usage	c/kWh	38.170
		Supply Charge	c/day	251.735
EVO Energy	Domestic Rate 3 (Heat Pump) with Off Peak 1	Peak Usage first 165 kWh per day	c/kWh	28.776
		Remaining Usage	c/kWh	38.170
		Off-Peak Usage	c/kWh	24.288
EVO Energy	Domestic Rate 3 (Heat Pump) with Off Peak 2	Off-Peak Usage	c/kWh	24.288
		Peak Usage first 165 kWh per day	c/kWh	28.776
		Remaining Usage	c/kWh	38.170
EVO Energy	Domestic Time of Use	Off-Peak Usage	c/kWh	24.288
		Shoulder Usage (9am-5pm & 8pm-10pm daily)	c/kWh	33.275
		Supply Charge	c/day	149.248
EVO Energy	Domestic Time of Use	Peak Usage (7am-9am & 5pm-8pm daily)	c/kWh	47.168
		Off-Peak Usage (All other times)	c/kWh	26.191
		Supply Charge	c/day	149.248

# Origin Basic – gas tariffs

Australian Capital Territory

Zone	Tariff Description	Price List	Units	Rate (incl. GST)
EVO Energy	Domestic	Supply Charge	c/day	91.2670
		Usage first 41.0959 MJ/Day	c/MJ	5.4890
		Usage next 442.1918 MJ/Day	c/MJ	4.7190
		Usage next 1489.3151 MJ/Day	c/MJ	4.3890
		Remaining Usage	c/MJ	4.3890

## Connection fees – electricity

Australian Capital Territory

Connection Fee \$178.10

### Metering charges

Charges may be applied when the customer requests a change, removal, or installation of an electricity meter. It is the cost of the fees we directly incur from Meter Service Providers for the works.

## Connection fees – gas

Australian Capital Territory

Connection Fee \$0.00\*

\*Charges may apply and are subject to network site inspection.

Zone	Tariff Type	Rate
New Connection	Temporary Builders' Supply	\$2,126.29
New Connection	New Overhead Service Connection	\$2,491.09
Wasted Site Visit	Rescheduled Site Visit	\$1,176.79

Origin Basic – electricity tariffs

New South Wales

Zone	Tariff Description	Price List	Units	Rate (incl. GST)
Ausgrid	Domestic Peak Only	<b>Supply Charge</b>	<b>c/day</b>	<b>105.611</b>
		All Usage	c/kWh	40.491
Ausgrid	Domestic Peak with CL1	<b>Supply Charge</b>	<b>c/day</b>	<b>105.611</b>
		All Usage	c/kWh	40.491
		Controlled Load Off-Peak 1	c/kWh	19.382
Ausgrid	Domestic Peak with CL2	<b>Supply Charge</b>	<b>c/day</b>	<b>105.611</b>
		All Usage	c/kWh	40.491
		Controlled Load Off-Peak 2	c/kWh	19.382
Ausgrid	Domestic Seasonal TOU	<b>Supply Charge</b>	<b>c/day</b>	<b>125.664</b>
		Shoulder Usage - All Other Times	c/kWh	39.490
		Peak Usage (2pm - 8pm (1 Nov - 31 Mar) and 5pm - 9pm (1 Jun - 31 Aug) Working Weekdays)	c/kWh	75.482
		Off-Peak Usage - All Days 10pm - 7am	c/kWh	23.034
Ausgrid	Domestic Seasonal TOU with CL1	<b>Supply Charge</b>	<b>c/day</b>	<b>125.664</b>
		Shoulder Usage - All Other Times	c/kWh	39.490
		Peak Usage (2pm - 8pm (1 Nov - 31 Mar) and 5pm - 9pm (1 Jun - 31 Aug) Working Weekdays)	c/kWh	75.482
		Off-Peak Usage - All Days 10pm - 7am	c/kWh	23.034
Ausgrid	Domestic Seasonal TOU with CL2	<b>Supply Charge</b>	<b>c/day</b>	<b>125.664</b>
		Shoulder Usage - All Other Times	c/kWh	39.490
		Peak Usage (2pm - 8pm (1 Nov - 31 Mar) and 5pm - 9pm (1 Jun - 31 Aug) Working Weekdays)	c/kWh	75.482
		Off-Peak Usage - All Days 10pm - 7am	c/kWh	23.034
Ausgrid	Domestic Seasonal TOU Transitional	<b>Supply Charge</b>	<b>c/day</b>	<b>105.611</b>
		Shoulder Usage - All Other Times	c/kWh	40.491
		Peak Usage (2pm - 8pm (1 Nov - 31 Mar) and 5pm - 9pm (1 Jun - 31 Aug) Working Weekdays)	c/kWh	40.491
		Off-Peak Usage - All Days 10pm - 7am	c/kWh	40.491
Ausgrid	Domestic Seasonal TOU Transitional with CL1	<b>Supply Charge</b>	<b>c/day</b>	<b>105.611</b>
		Shoulder Usage - All Other Times	c/kWh	40.491
		Peak Usage (2pm - 8pm (1 Nov - 31 Mar) and 5pm - 9pm (1 Jun - 31 Aug) Working Weekdays)	c/kWh	40.491
		Off-Peak Usage - All Days 10pm - 7am	c/kWh	40.491
Ausgrid	Domestic Seasonal TOU Transitional with CL 2	<b>Supply Charge</b>	<b>c/day</b>	<b>105.611</b>
		Shoulder Usage - All Other Times	c/kWh	40.491
		Peak Usage (2pm - 8pm (1 Nov - 31 Mar) and 5pm - 9pm (1 Jun - 31 Aug) Working Weekdays)	c/kWh	40.491
		Off-Peak Usage - All Days 10pm - 7am	c/kWh	40.491
		Controlled Load Off-Peak 1	c/kWh	19.382
		Controlled Load Off-Peak 2	c/kWh	19.382



Origin Basic – electricity tariffs continued

Zone	Tariff Description	Price List	Units	Rate (incl. GST)
Endeavour Energy	Domestic Peak Only	<b>Supply Charge</b>	<b>c/day</b>	<b>100.320</b>
		All Usage	c/kWh	41.723
Endeavour Energy	Domestic Peak with CL1	<b>Supply Charge</b>	<b>c/day</b>	<b>100.320</b>
		All Usage	c/kWh	41.723
		Controlled Load Off-Peak 1	c/kWh	22.077
		Supply Charge Off-Peak 1	c/day	13.673
Endeavour Energy	Domestic Peak with CL2	<b>Supply Charge</b>	<b>c/day</b>	<b>100.320</b>
		All Usage	c/kWh	41.723
		Controlled Load Off-Peak 2	c/kWh	22.077
		Supply Charge Off-Peak 2	c/day	13.673
Endeavour Energy	Domestic TOU	<b>Supply Charge</b>	<b>c/day</b>	<b>121.924</b>
		Shoulder Usage (7am - 1pm and 8pm - 10pm on business days)	c/kWh	45.419
		Peak Usage (1pm - 8pm on business days)	c/kWh	56.672
		Off-Peak Usage (10pm-7am everyday)	c/kWh	30.107
Endeavour Energy	Domestic TOU with CL1	<b>Supply Charge</b>	<b>c/day</b>	<b>121.924</b>
		Shoulder Usage (7am - 1pm and 8pm - 10pm on business days)	c/kWh	45.419
		Peak Usage (1pm - 8pm on business days)	c/kWh	56.672
		Off-Peak Usage (10pm-7am everyday)	c/kWh	30.107
		Controlled Load Off-Peak 1	c/kWh	22.077
		Supply Charge Off-Peak 1	c/day	13.673
Endeavour Energy	Domestic TOU with CL2	<b>Supply Charge</b>	<b>c/day</b>	<b>121.924</b>
		Shoulder Usage (7am - 1pm and 8pm - 10pm on business days)	c/kWh	45.419
		Peak Usage (1pm - 8pm on business days)	c/kWh	56.672
		Off-Peak Usage (10pm-7am everyday)	c/kWh	30.107
		Controlled Load Off-Peak 2	c/kWh	22.077
		Supply Charge Off-Peak 2	c/day	13.673
Essential Energy	Domestic Peak Only	<b>Supply Charge</b>	<b>c/day</b>	<b>194.964</b>
Essential Energy	Domestic Peak with CL1	All Usage	c/kWh	44.110
		Controlled Load Off-Peak 1	c/kWh	20.306
		Supply Charge Off-Peak 1	c/day	17.457
Essential Energy	Domestic Peak with CL2	<b>Supply Charge</b>	<b>c/day</b>	<b>194.964</b>
		All Usage	c/kWh	44.110
		Controlled Load Off-Peak 2	c/kWh	20.306
		Supply Charge Off-Peak 2	c/day	17.457

Origin Basic – electricity tariffs continued

Zone	Tariff Description	Price List	Units	Rate (incl. GST)
Essential Energy	Domestic TOU Interval Meter	<b>Supply Charge</b>	<b>c/day</b>	<b>203.258</b>
		Shoulder Usage (7am-5pm and 8pm-10pm on Weekdays)	c/kWh	50.831
		Peak Usage (5pm-8pm on Weekdays)	c/kWh	58.696
		Off-Peak Usage - All Other Times	c/kWh	35.266
Essential Energy	Domestic TOU Interval Meter with CL1	<b>Supply Charge</b>	<b>c/day</b>	<b>203.258</b>
		Shoulder Usage (7am-5pm and 8pm-10pm on Weekdays)	c/kWh	50.831
		Peak Usage (5pm-8pm on Weekdays)	c/kWh	58.696
		Off-Peak Usage - All Other Times	c/kWh	35.266
		Controlled Load Off-Peak 1	c/kWh	20.306
		Supply Charge Off-Peak 1	c/day	17.457
Essential Energy	Domestic TOU Interval Meter with CL2	<b>Supply Charge</b>	<b>c/day</b>	<b>203.258</b>
		Shoulder Usage (7am-5pm and 8pm-10pm on Weekdays)	c/kWh	50.831
		Peak Usage (5pm-8pm on Weekdays)	c/kWh	58.696
		Off-Peak Usage - All Other Times	c/kWh	35.266
		Controlled Load Off-Peak 2	c/kWh	20.306
		Supply Charge Off-Peak 2	c/day	17.457

Origin Basic – electricity tariffs continued

Zone	Tariff Description	Price List	Units	Rate (incl. GST)
Essential Energy	Domestic TOU	<b>Supply Charge</b>	<b>c/day</b>	<b>195.239</b>
		Peak Usage (7am-9am and 5pm-8pm on Weekdays)	c/kWh	56.254
		Shoulder Usage (9am-5pm and 8pm-10pm on Weekdays)	c/kWh	52.877
		‘Off-Peak Usage - All Other Times	c/kWh	35.321
Essential Energy	Domestic TOU with CL1	<b>Supply Charge</b>	<b>c/day</b>	<b>195.239</b>
		Peak Usage (7am-9am and 5pm-8pm on Weekdays)	c/kWh	56.254
		Shoulder Usage (9am-5pm and 8pm-10pm on Weekdays)	c/kWh	52.877
		Off-Peak Usage - All Other Times	c/kWh	35.321
		Controlled Load Off-Peak 1	c/kWh	20.306
		Supply Charge Off-Peak 1	c/kWh	17.457
Essential Energy	Domestic TOU with CL2	<b>Supply Charge</b>	<b>c/day</b>	<b>195.239</b>
		Peak Usage (7am-9am and 5pm-8pm on Weekdays)	c/kWh	56.254
		Shoulder Usage (9am-5pm and 8pm-10pm on Weekdays)	c/kWh	52.877
		Off-Peak Usage - All Other Times	c/kWh	35.321
		Controlled Load Off-Peak 2	c/kWh	20.306
		Supply Charge Off-Peak 2	c/day	17.457
Essential Energy	Residential TOU	<b>Supply Charge</b>	<b>c/day</b>	<b>205.425</b>
		Peak Usage (7am-10am and 3pm-10pm all days)	c/kWh	52.085
		Off-Peak Usage - All Other Times	c/kWh	35.486
Essential Energy	Residential TOU with CL1	<b>Supply Charge</b>	<b>c/day</b>	<b>205.425</b>
		Peak Usage (7am-10am and 3pm-10pm all days)	c/kWh	52.085
		Off-Peak Usage - All Other Times	c/kWh	35.486
		Controlled Load Off-Peak 1	c/kWh	20.306
		Supply Charge Off-Peak 1	c/kWh	17.457
Essential Energy	Residential TOU with CL2	<b>Supply Charge</b>	<b>c/day</b>	<b>205.425</b>
		Peak Usage (7am-10am and 3pm-10pm all days)	c/kWh	52.085
		Off-Peak Usage - All Other Times	c/kWh	35.486
		Controlled Load Off-Peak 2	c/kWh	20.306
		Supply Charge Off-Peak 2	c/kWh	17.457

Origin Basic – gas tariffs

New South Wales

Zone	Tariff Type	Price List	Units	Rate (incl. GST)
Jemena Coastal	Domestic	Supply Charge	c/day	84.007
		Usage first 20.7123 MJ per day	c/MJ	5.643
		Usage next 2,724.4932 MJ per day	c/MJ	3.872
		Remaining Usage	c/MJ	3.597
Jemena Country	Domestic	Supply Charge	c/day	84.007
		Usage first 20.7123 MJ per day	c/MJ	5.643
		Usage next 2,724.4932 MJ per day	c/MJ	3.872
		Remaining Usage	c/MJ	3.597

Albury/Murray Valley

Zone	Tariff Type	Price List	Units	Rate (incl. GST)
Australian Gas Networks Albury	Domestic	Supply Charge	c/day	76.230
		Usage first 27.40 MJ per day	c/MJ	3.685
		Remaining Usage	c/MJ	3.234
Australian Gas Networks Murray Valley (NSW)	Domestic	Supply Charge	c/day	78.320
		Usage first 27.40 MJ per day	c/MJ	5.093
		Remaining Usage	c/MJ	4.169

Wagga Wagga and Surrounding Towns

Zone	Tariff Type	Price List	Units	Rate (incl. GST)
Australian Gas Networks Wagga Wagga & Uranquinty	Residential	Supply Charge	c/day	121.979
		All Consumption	c/MJ	4.180
Australian Gas Networks Tumut & Gundagai	Residential	Supply Charge	c/day	98.043
		All Consumption	c/MJ	4.488
Australian Gas Networks Temora, Culcairn, Henty, Holbrook & Walla Walla	Residential	Supply Charge	c/day	94.809
		All Consumption	c/MJ	4.521
Australian Gas Networks Cooma & Bombala	Residential	Supply Charge	c/day	89.914
		All Consumption	c/MJ	4.444
Central Ranges Pipeline (Tamworth)	Residential	Supply Charge	c/day	73.535
		All Consumption	c/MJ	5.665

## Connection fees – electricity

### New South Wales

NMI Allocation Ausgrid	\$78.71
NMI Allocation Endeavour	\$44.58
NMI Allocation Essential	\$102.75

Metering Service Fees:	Charged by the network directly to the Accredited Service Provider.
Metering Charges:	Charges may be applied when the customer requests a change, removal, or installation of an electricity meter. It is the cost of the fees e directly incur from Meter Service Providers for the works

## Connection fees – gas

### New South Wales

Incomplete Meter Fix AGN Murray Valley	\$121.00
--	----------

Other fees

All States

Card payment fee	<p>Card payments may incur a fee applied to the total payment amount (incl GST):</p> <ul style="list-style-type: none"><li>• debit card (Visa 0.27%, Mastercard 0.33%)</li><li>• credit card (Visa 0.65%, Mastercard 0.67% or American Express 0.64%)</li><li>• and for NSW customers 0.49% for card payments made at an Australia Post outlet.</li></ul>
Late payment fee	<p>\$15 (does not apply to Supply Addresses in Victoria – refer to the Agreement Terms for details).</p>
Payment processing fee	<p>For payments made at an Australia Post outlet, a payment processing fee of the higher of \$2.70 or 0.49% (incl GST) may apply.</p>
Dishonoured payment fee (cheque via Australia Post)	<p>A \$15.00 (incl GST) fee may apply if a cheque payment through Australia Post is dishonoured or reversed.</p>
Paper bill fee	<p>\$2.15 (incl GST) may apply for each paper bill.</p>
Meter works administration fee	<p>This fee may apply when the customer requests that we arrange electricity metering-related goods or services for them with a Meter Service Provider or Distributor. Visit <a href="https://originenergy.com.au/additionalcharges">originenergy.com.au/additionalcharges</a> for the current fee amount.</p>
Metering charge	<p>Meter Service Providers may charge additional fees where the customer requests an installation, change or removal of an electricity meter and they'll pass on any fees for their services directly to us. If they charge us, we'll pass on the fees to the customer on their bill as a metering charge. Services vary based on request. For more information about fees visit <a href="https://originenergy.com.au/meterfees">originenergy.com.au/meterfees</a>.</p>

The payment processing fee and the paper bill fee is not charged to customers in NSW.

Disconnection fees – all zones

Electricity

Zone	Price (incl.GST)
Powercor	\$76.53
Citipower	\$49.32
Jemena	\$95.65
United Energy	\$67.45
Ausnet Services	\$46.89
SA Power Networks	\$63.71
Energex	\$22.20
EVO Energy	\$110.22
Ausgrid	\$118.16
Endeavour Energy	\$126.29
Essential Energy	\$96.98

Gas

Zone	Price (incl.GST)
Multinet	\$8.80
AGN	\$16.72
Ausnet Services	\$8.18
AGN South Australia	\$14.52
AGN Queensland	\$13.20
APT Allgas Queensland	\$26.08
EVO Energy	\$14.30
Jemena	\$18.70
AGN Albury	\$16.72
AGN Murray Valley NSW	\$16.72
AGN NSW	\$68.00
Central Ranges Tamworth	\$62.23

# How to contact us

Web	originenergy.com.au
Enquiries	1300 132 480
New connection enquiries	newconnections@originenergy.com.au
Fax	1300 132 465
Postal address	PO Box 4398, Melbourne VIC 3001
National Relay Service for hearing impaired customers	13 36 77



**Interpreter Service 1300 137 427**

**خدمة الترجمة الهاتفية للغات غير الإنكليزية.**

Servicio Telefónico de Intérpretes para otros idiomas.

Per lingue oltre all'inglese contattate il Servizio d'Interpretariato Telefonico

Dịch vụ thông dịch qua điện thoại cho những ngôn ngữ khác không phải tiếng Anh.

Τηλεφωνική Υπηρεσία Διερμηνέων για άλλες γλώσσες εκτός της αγγλικής.

**非英語語言電話傳譯服務。**

**Large Print Copy 13 24 61**

A large print copy of this document  
is available on request by calling us.

## For more information

**Q originenergy.com.au/buildingindustry**

**📞 1300 132 480**

Origin Energy Retail Limited ABN 22 078 868 425 • Origin Energy (Vic) Pty Limited ABN 11 086 013 283 • Origin Energy Electricity Limited ABN 33 071 052 287 • Origin Energy LPG Limited ABN 77 000 508 369 • OC Energy Pty Ltd ABN 62 144 655 514 • WINconnect Pty Ltd ABN 71 112 175 710 • Sun Retail Pty Limited ABN 97 078 848 549 • Level 19 Festival Tower, Station Road, Adelaide SA 5000 • Tel 13 24 61 • Fax 1800 132 463 • Web queries originenergy.com.au/contactus