

Are you ready?

Preparing your site for a new natural gas connection

1 ACCESS

The site must allow clear access for field work crews to enter and exit and complete their work.

2 CLEAN & CLEAR

Proposed service line and meter location **must be free from:**

- Scaffolding
- Temporary fencing
- Bins and toilets
- Building materials

Preference is to have no other trades onsite impeding the service installation.

3 MARKINGS

Site must be clearly marked with Lot/ House number, street and suburb and visible from the street.

Final ground levels should be clearly marked on site.

4 LOCATION

Intended gas meter location must be identified as per your specific gas distributor's requirements.

Meter location must be accessible for reading and maintenance (e.g. not behind gate).

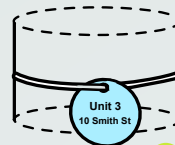
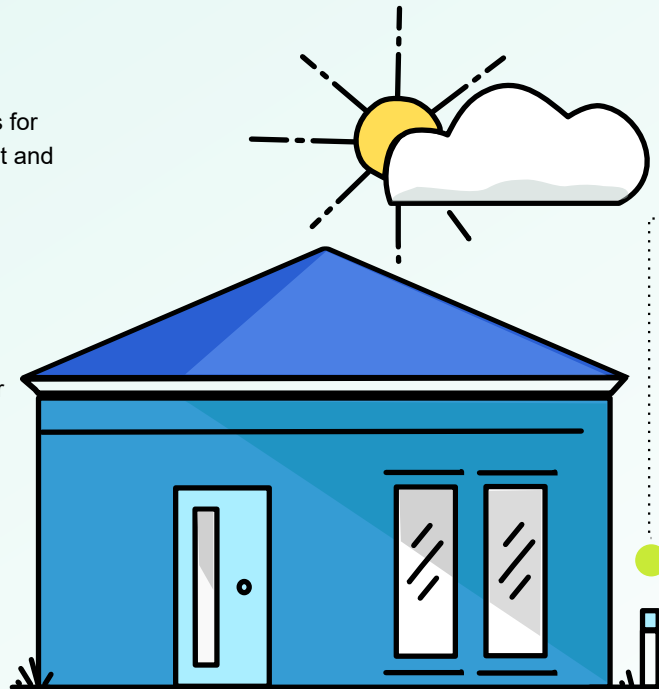
The meter must be protected from damage if proposed location is within 1 metre of vehicle traffic.

The meter must be in a compliant position in accordance with AS 5601 and AS 4645.

Minimum Clearance

| | |
|--------|--------------------------------|
| 500mm | Electricity meter |
| 500mm | Communication equipment |
| 1000mm | Window, door, garage, driveway |
| 1000mm | Electricity equipment |
| 1000mm | Source of ignition |
| 3000mm | Mechanical air inlet |
| 5000mm | Flammable materials storage |

For multi-dwelling installations, a metal tag with the unit/house number engraved on it must be permanently attached to the fitting line using a secure metal wire.



Once we receive your request for a new gas connection we will schedule a site inspection to check if your site is ready to lay the service line.

Meeting the requirements for site readiness helps to ensure our crews are safe and efficient and minimises delays to your connection, and others who have requested connections.

As soon as we assess your site as ready, we aim to lay your service within 20 business days.

Should the fieldwork crew find site conditions have changed and the site no longer meets the mandatory requirements, a site re-evaluation will be required and the works scheduled to take place within 20 days after readiness.

The information on this sheet is a guideline. Please see your distributor's website for further, detailed requirements.