



To	Company Announcements Office	Facsimile	1300 135 638
Company	ASX Limited	Date	21 August 2014
From	Helen Hardy	Pages	8
Subject	CEN Monthly Operational Data July 2014		

Attached herewith is a copy of an announcement released to the NZX by Contact Energy today.

Origin Energy holds 53.09% of quoted ordinary shares in Contact Energy Limited.

Regards

Helen Hardy
Company Secretary

02 8345 5000 - helen.hardy@originenergy.com.au

Contact™

Monthly Operational Data

For the month ended 31 July 2014



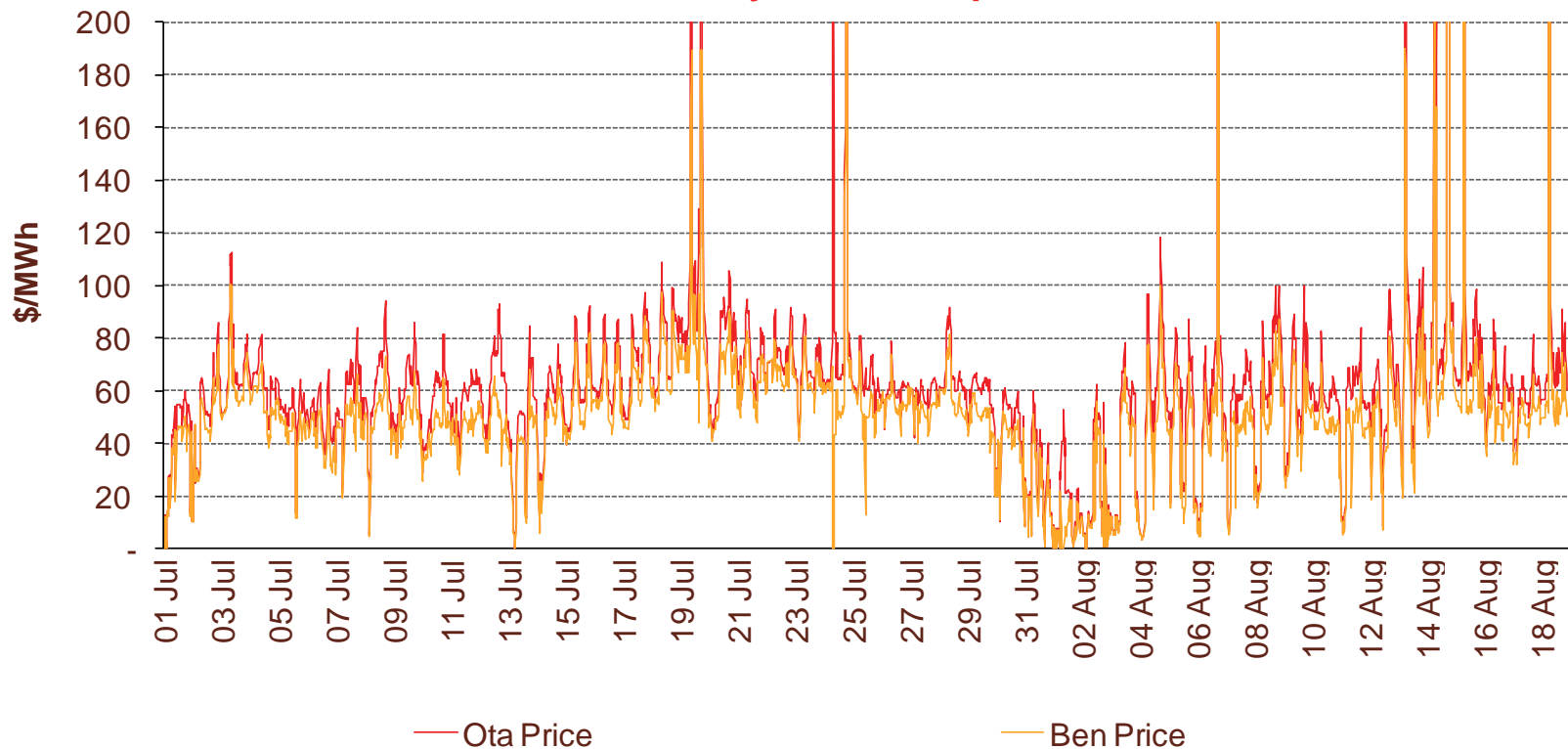
Highlights for July 2014

- **Hydro storage as at 31 July: South Island 118% of mean, North Island 65% of mean (p4)**
- **Average Otahuhu wholesale price for July 2014: \$62/MWh (p3)**
- **Otahuhu futures settlement wholesale price for 3rd quarter 2014 (ASX) (p4):**
 - As at 18 August: \$57/MWh
 - As at 31 July: \$51/MWh
 - As at 30 June: \$61/MWh

Wholesale electricity prices

- The average price at Otahuhu (North Island) for July 2014 was \$62/MWh while the average price at Benmore (South Island) was \$53/MWh.
- The average Otahuhu price from 1 August to 18 August 2014 was \$60/MWh. The average Benmore price over this period was \$50/MWh.

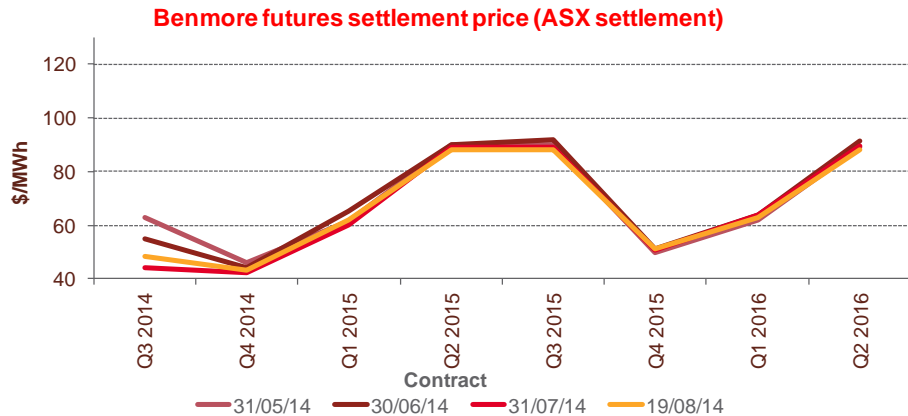
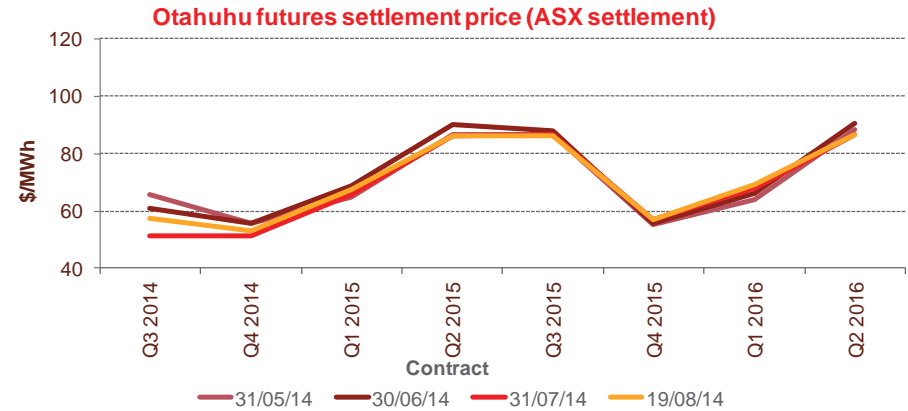
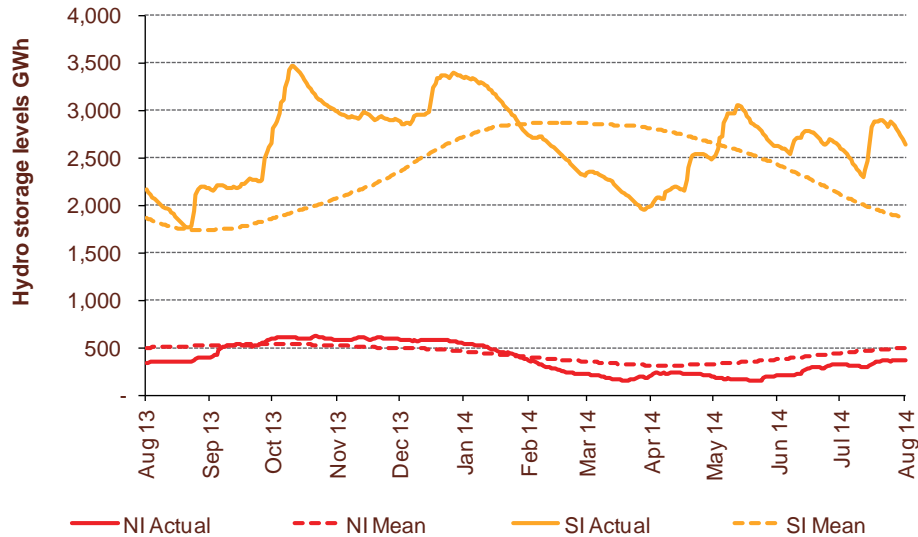
Half hourly wholesale prices



Storage levels and wholesale electricity prices

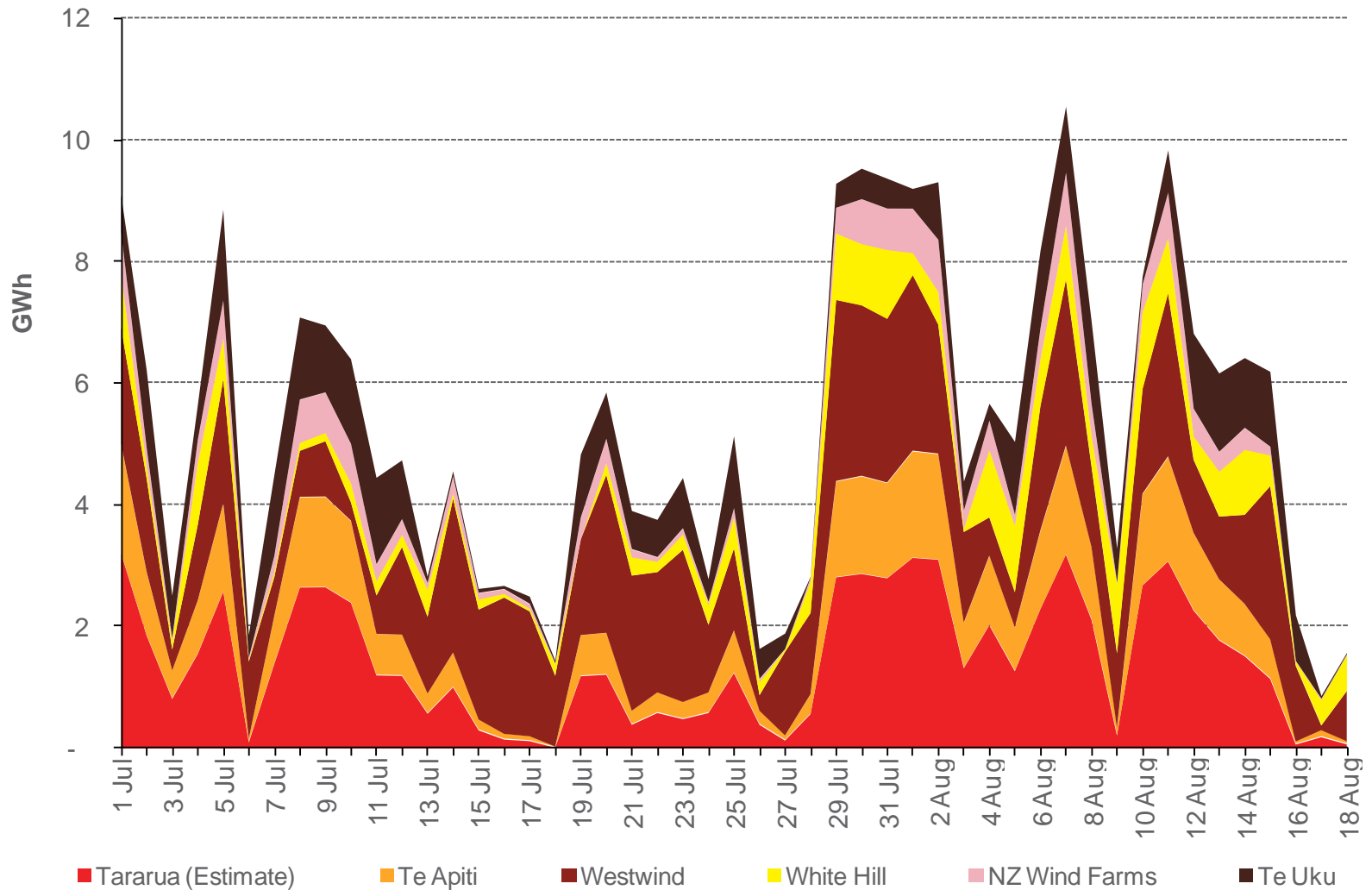
- At 31 July, South Island storage was 118% of mean (30 June: 117%) and North Island storage was 65% of mean (30 June: 57%)
- As at 18 August 2014, storage was:
 - South Island: 142% of mean
 - North Island: 73% of mean

Hydro storage



Wind generation

Daily wind generation (SCADA)



Monthly demand comparison

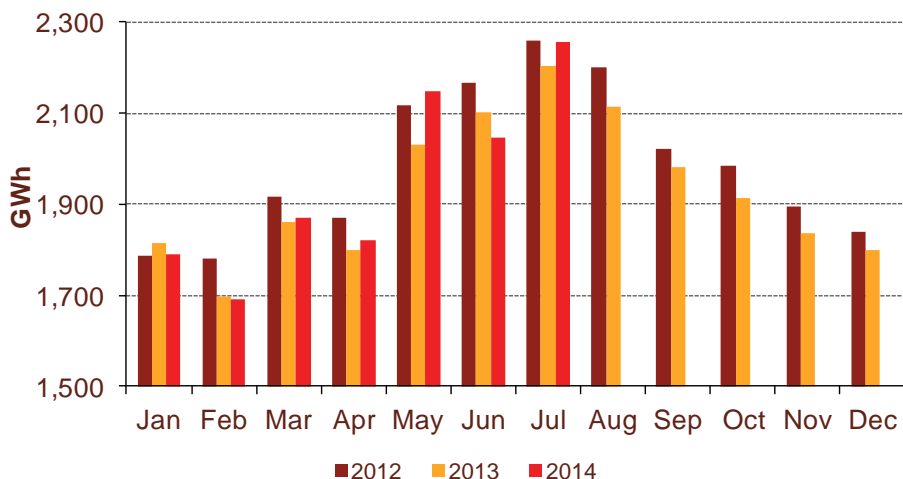
- NIWA's national climate summary for July 2014 reports:

- The New Zealand national average temperature in July was 8.2°C (0.3°C above the 1971-2000 average)

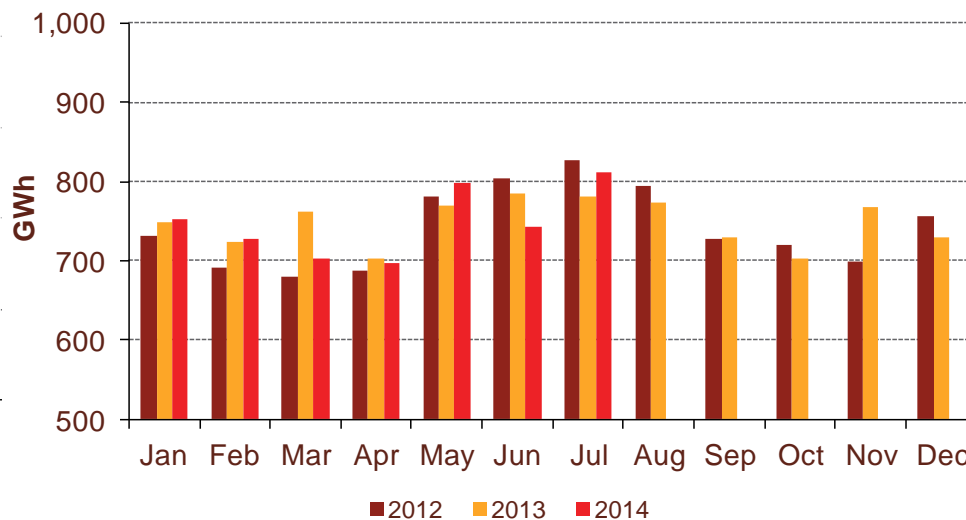
Demand	12 months to date			Growth rate		July demand			Growth rate	
	GWh			% p.a.		GWh			% p.a.	
	2014	2013	2012	1 year	2 year	2014	2013	2012	1 year	2 year
North Island	23,267	23,445	24,028	(0.8%)	(1.6%)	2,256	2,202	2,259	2.4%	(0.1%)
South Island excluding Tiwai	8,938	8,971	8,884	(0.4%)	0.3%	811	781	826	3.8%	(0.9%)
Total	32,205	32,416	32,912	(0.7%)	(1.1%)	3,067	2,984	3,085	2.8%	(0.3%)

Source: SCADA data (Excludes embedded generation)

North Island



South Island excluding Tiwai



Contact Netback, Cost of Energy and LPG Data

Data		Measure	The month ended July 2014	The month ended July 2013	The month ended June 2014
Netback	Mass market electricity sales	GWh	430	431	369
	Commercial & industrial electricity sales	GWh	364	356	345
	Retail gas sales	GWh	90	87	67
	Steam sales	GWh	34	27	27
	Total retail sales	GWh	918	901	808
	Average electricity sales price	\$/MWh	202.14	201.27	211.18
	Electricity direct pass through costs	\$/MWh	74.34	70.98	79.57
	Electricity and gas cost to serve	\$/MWh	11.15	10.41	14.10
	Netback	\$/MWh	104.95	108.11	108.43
	Actual electricity line losses	%	6%	4%	8%
	Retail gas sales	PJ	0.3	0.3	0.3
	Electricity customer numbers ¹		438,500	439,000	437,500
	Gas customer numbers ¹		63,500	61,500	63,000
Cost of energy	Thermal generation	GWh	195	357	132
	Geothermal generation	GWh	286	195	257
	Hydro generation	GWh	423	432	419
	Spot market generation	GWh	903	984	809
	Spot electricity purchases	GWh	843	814	775
	CfD sales	GWh	24	140	(10)
	GWAP	\$/MWh	57.07	53.99	49.65
	LWAP	\$/MWh	60.79	56.81	54.44
	LWAP/GWAP	%	107%	105%	110%
	Gas used in internal generation	PJ	1.7	2.9	1.1
	Wholesale gas sales	PJ	0.0	0.0	0.0
	Gas storage net movement	PJ	0.4	0.5	0.8
	Unit generation cost	\$/MWh	32.37	41.39	20.77
Net purchase cost	\$/MWh	33.16	34.62	25.10	
LPG	LPG sales	tonnes	7,425	7,001	5,923
	LPG customer numbers (includes franchises) ¹		67,000	65,000	67,000

¹ Data has been rounded to the nearest 500 and reflects numbers as at month end.