



To	Company Announcements Office	Facsimile	1300 135 638
Company	ASX Limited	Date	3 February 2014
From	Helen Hardy	Pages	8
Subject	Contact Energy Monthly Operational Data December 2013		

Attached herewith is a copy of an announcement released to the NZX by Contact Energy today.

Origin Energy holds 53.09% of quoted ordinary shares in Contact Energy Limited.

Regards

A handwritten signature in black ink, appearing to read "Helen Hardy".

Helen Hardy
Company Secretary

02 8345 5023 - helen.hardy@originenergy.com.au

Contact™

Monthly Operational Data

For the month ended 31 December 2013

December 2013



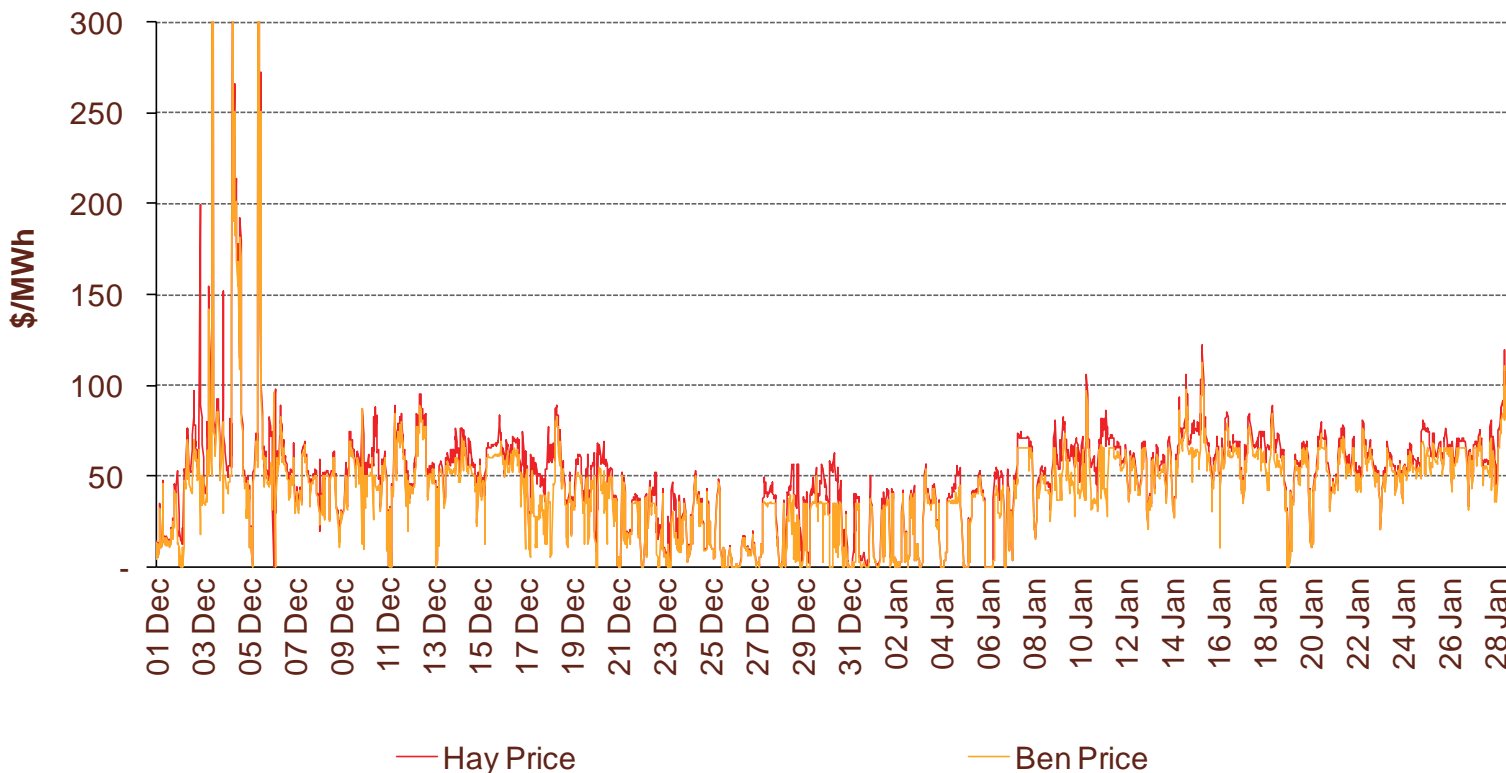
Highlights for December 2013

- **Hydro storage as at 31 December: South Island 118% of mean, North Island 119% of mean (p4)**
- **Average Haywards wholesale price for December 2013: \$47/MWh (p3)**
- **Otahuhu futures settlement wholesale price for 1st quarter 2014 (ASX) (p4):**
 - As at 28 January: \$72/MWh
 - As at 31 December: \$64/MWh
 - As at 30 November: \$54/MWh

Wholesale electricity prices

- The average price at Haywards (North Island) for the month of December 2013 was \$47/MWh while the average price at Benmore (South Island) was \$39/MWh.
- The average Haywards price from 1 January to 28 January 2014 was \$53/MWh. The average Benmore price over this period was \$48/MWh.

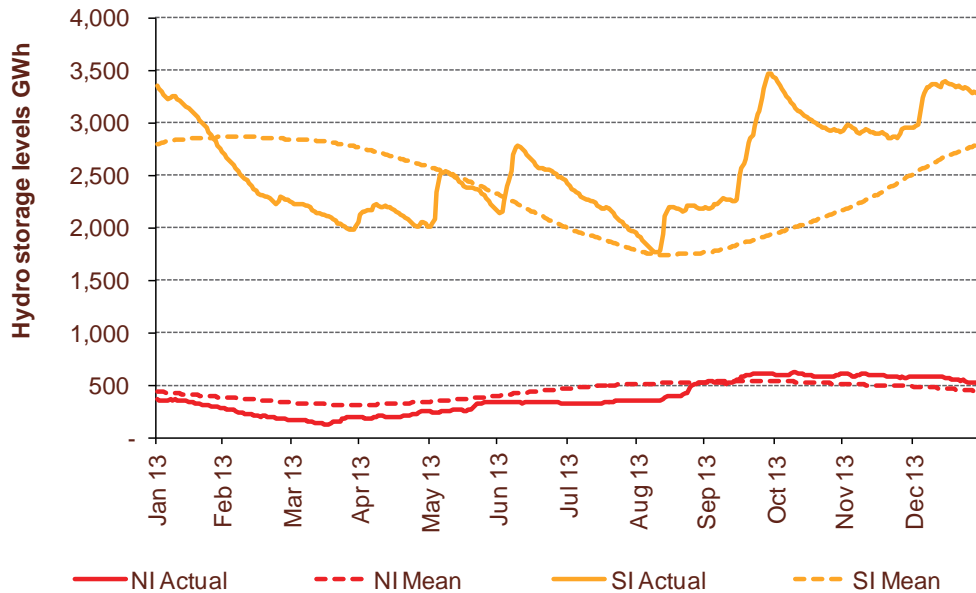
Half hourly wholesale prices



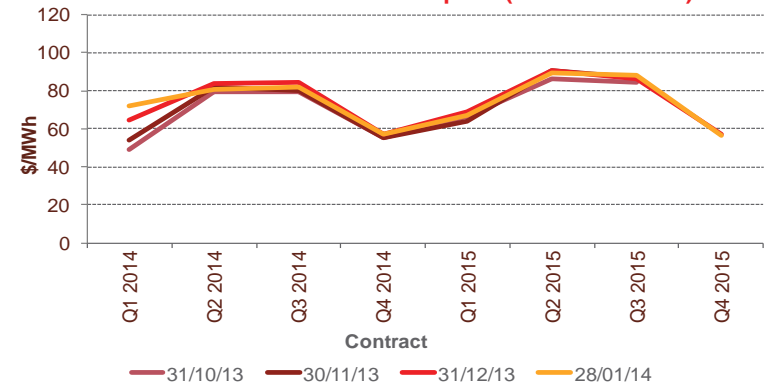
Storage levels and wholesale electricity prices

- At 31 December 2013, South Island storage was 118% of mean (30 November: 136%) and North Island storage was 119% of mean (30 November: 119%)
- As at 28 January 2014, storage was:
 - South Island: 116% of mean
 - North Island: 116% of mean

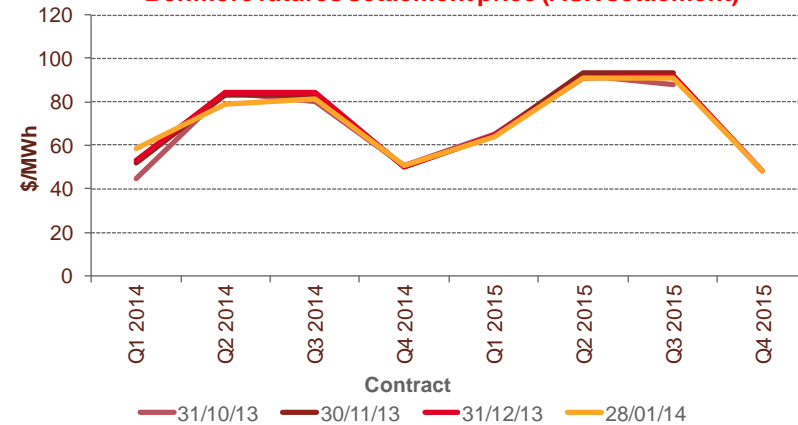
Hydro storage



Otago futures settlement price (ASX settlement)

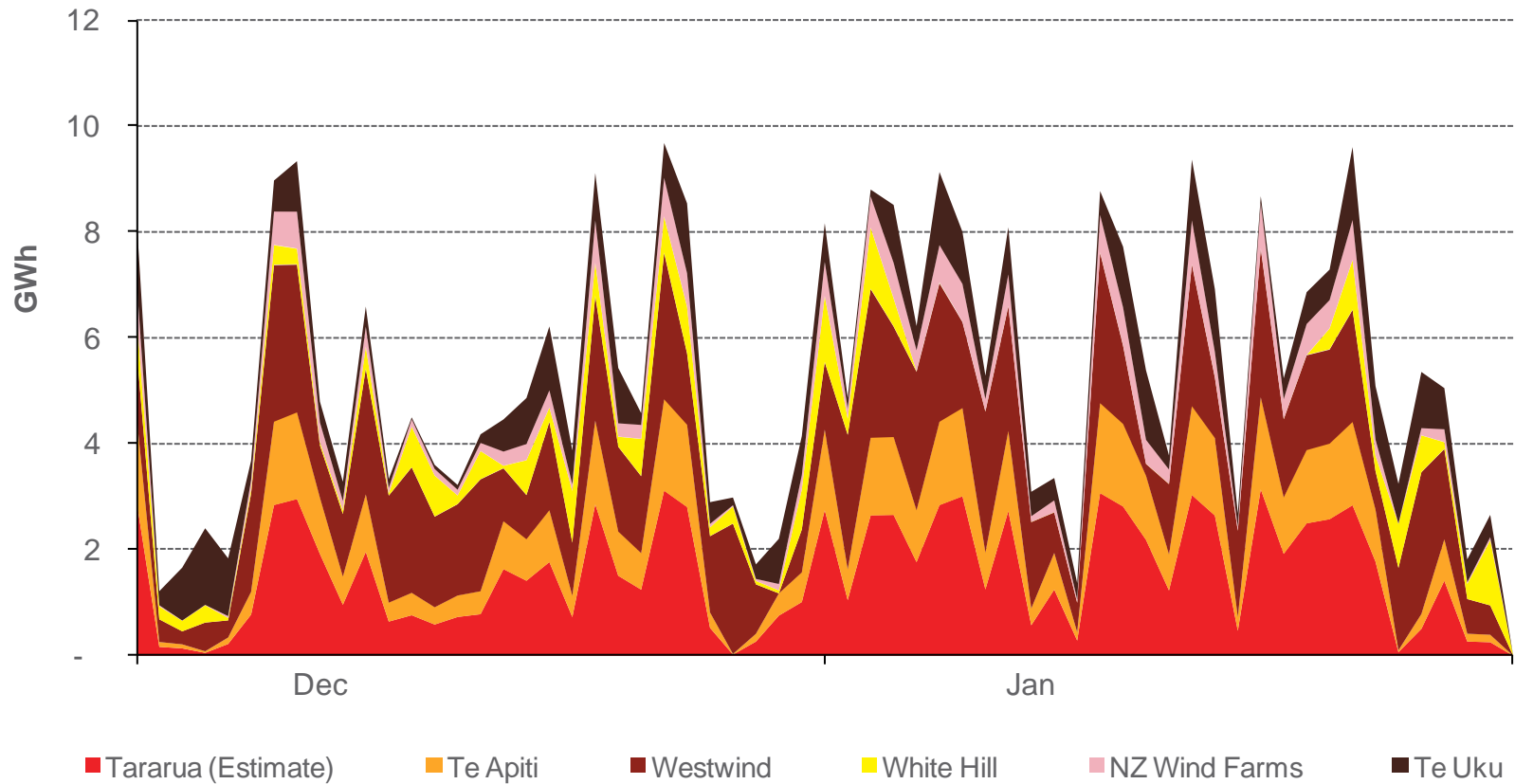


Benmore futures settlement price (ASX settlement)



Wind generation

Daily wind generation (SCADA)



Monthly demand comparison

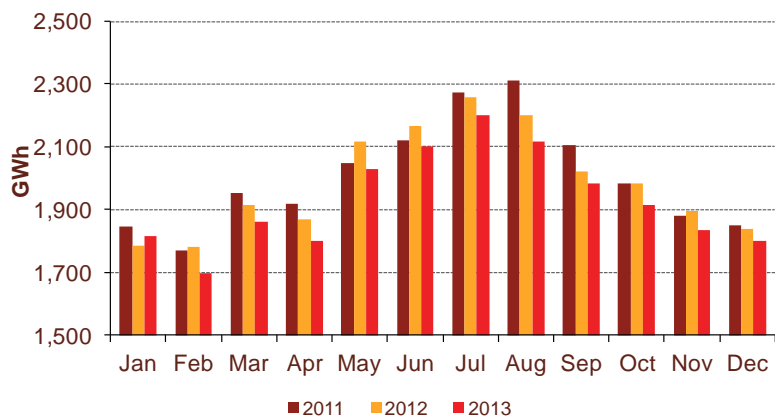
• NIWA's national climate summary for December 2013 reports:

- The New Zealand national average temperature in December was 16.6°C (1°C above the 1971-2000 average)

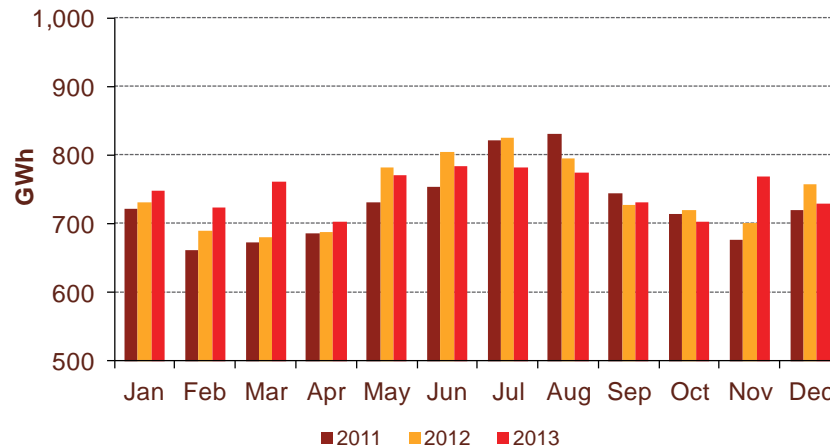
Demand	12 months to date			Growth rate		December demand			Growth rate	
	GWh			% p.a.		GWh			% p.a.	
	2013	2012	2011	1 year	2 year	2013	2012	2011	1 year	2 year
North Island	23,154	23,835	24,061	(2.9%)	(1.9%)	1,801	1,838	1,851	(2.0%)	(1.4%)
South Island excluding Tiwai	8,975	8,899	8,731	0.9%	1.4%	729	757	720	(3.6%)	0.7%
Total	32,128	32,734	32,792	(1.8%)	(1.0%)	2,530	2,595	2,570	(2.5%)	(0.8%)

Source: SCADA data

North Island



South Island excluding Tiwai



Contact Netback, Net Purchase Cost and LPG Data

7

December 2013

Data	Measure	The month ended December 2013	The month ended December 2012	The month ended November 2013	Six months ended December 2013	Six months ended December 2012	
Netback	Mass market electricity sales	GWh	273	305	282	2,029	2,207
	Commercial & industrial electricity sales	GWh	391	349	391	2,305	2,053
	Retail gas sales	GWh	33	42	33	357	388
	Steam sales	GWh	66	65	56	356	365
	Total retail sales	GWh	763	761	761	5,047	5,013
	Average electricity sales price	\$/MWh	164.46	170.23	162.68	178.83	181.61
	Electricity direct pass through costs	\$/MWh	67.03	64.07	66.89	69.98	69.33
	Electricity and gas cost to serve	\$/MWh	11.38	11.24	13.41	11.55	11.27
	Netback	\$/MWh	80.07	85.12	76.68	87.71	90.07
	Actual electricity line losses	%	8%	3%	2%	4%	4%
	Retail gas sales	PJ	0.1	0.2	0.1	1.3	1.4
	Electricity customer numbers ¹		438,500	442,500	437,500	438,500	443,000
	Gas customer numbers ¹		63,000	63,000	62,500	62,000	63,000
Net Purchase Cost	Thermal generation	GWh	57	226	205	1,522	1,768
	Geothermal generation	GWh	167	190	164	1,087	1,144
	Hydro generation	GWh	348	328	325	2,129	1,849
	Spot market generation	GWh	572	744	694	4,738	4,761
	Swaption	GWh	-	17	-	-	198
	Spot electricity purchases	GWh	709	666	674	4,462	4,382
	CfD sales	GWh	(198)	14	(26)	(55)	269
	GWAP	\$/MWh	43.88	53.73	33.40	47.12	55.67
	LWAP	\$/MWh	52.74	62.00	39.21	52.12	62.64
	LWAP/GWAP	%	120%	115%	117%	111%	113%
	Gas used in internal generation	PJ	0.8	2.1	1.9	13.4	15.7
	Wholesale gas sales	PJ	0.3	0.2	0.3	1.4	1.6
	Gas storage net movement	PJ	0.0	(0.7)	0.5	1.7	(1.7)
	Unit generation cost	\$/MWh	35.21	44.48	43.71	44.19	48.54
Net purchase cost	\$/MWh	31.32	37.86	34.66	37.95	43.99	
LPG	LPG sales	tonnes	4,964	5,192	4,889	34,153	36,809
	LPG customer numbers (includes franchises) ¹		66,000	63,000	65,000	65,500	62,500

¹ Data has been rounded to the nearest 500 and reflects numbers as at month end.