



To	Company Announcements Office	Facsimile	1300 135 638
Company	ASX Limited	Date	17 December 2013
From	Helen Hardy	Pages	8
Subject	CEN November 2013 Operational Data		

Please find attached a release on the above subject.

Regards

Helen Hardy
Company Secretary

02 8345 5023 - helen.hardy@originenergy.com.au

Contact™

Monthly Operational Data

For the month ended 30 November 2013

November 2013

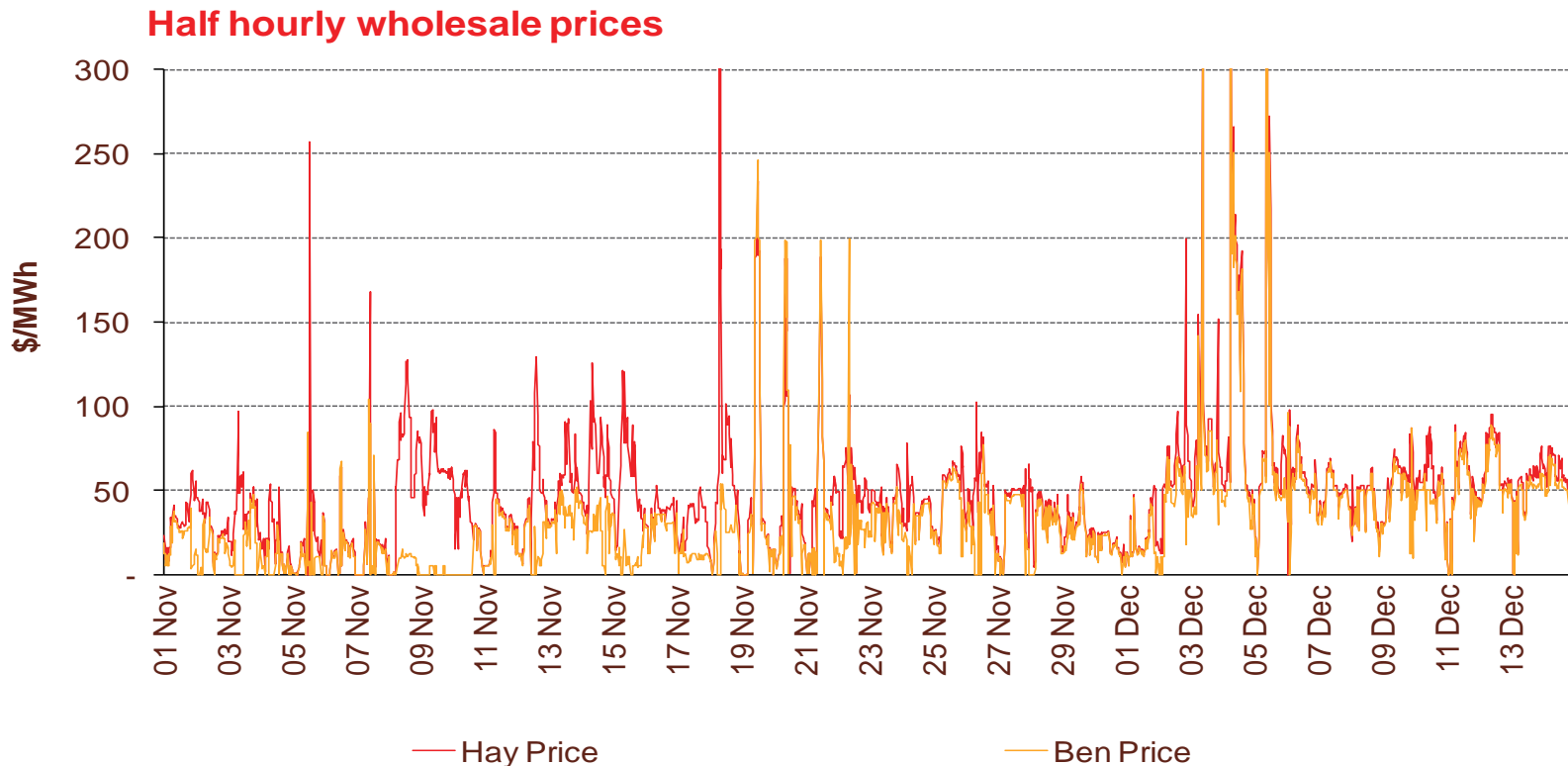


Highlights for November 2013

- **Hydro storage as at 30 November: South Island 136% of mean, North Island 119% of mean (p4)**
- **Average Haywards wholesale price for November 2013: \$41/MWh (p3)**
- **Otahuhu futures settlement wholesale price for 4th quarter 2013 (ASX) (p4):**
 - As at 16 December: \$45/MWh
 - As at 30 November: \$39/MWh
 - As at 31 October: \$34/MWh

Wholesale electricity prices

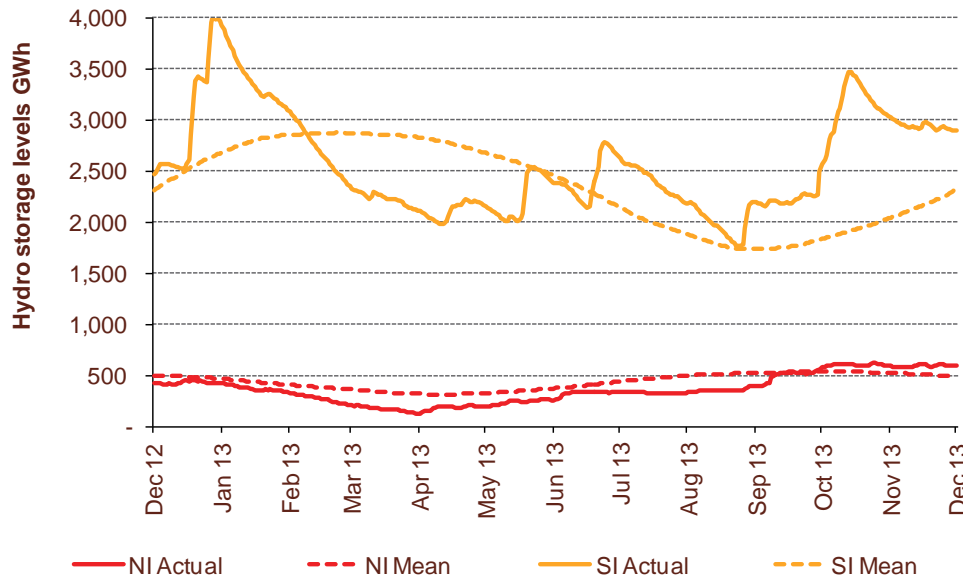
- The average price at Haywards (North Island) for the month of November 2013 was \$41/MWh while the average price at Benmore (South Island) was \$22/MWh.
- The average Haywards price from 1 December to 16 December 2013 was \$62/MWh. The average Benmore price over this period was \$55/MWh.



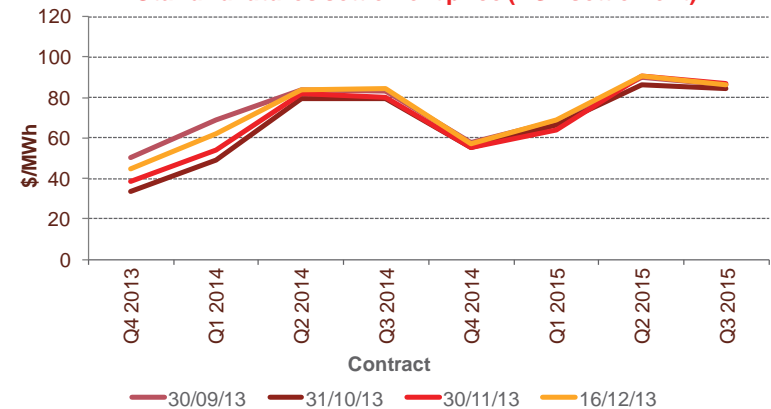
Storage levels and wholesale electricity prices

- At 30 November 2013, South Island storage was 136% of mean (31 October: 178 %) and North Island storage was 119% of mean (31 October: 113%)
- As at 16 December 2013, storage was:
 - South Island: 125% of mean
 - North Island: 120% of mean

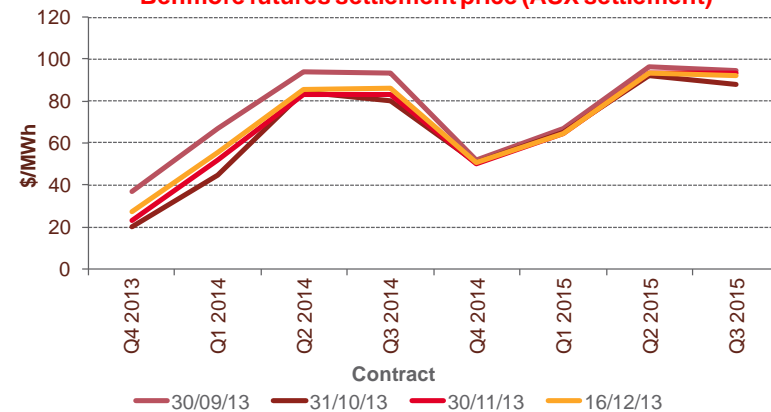
Hydro storage



Otago futures settlement price (ASX settlement)

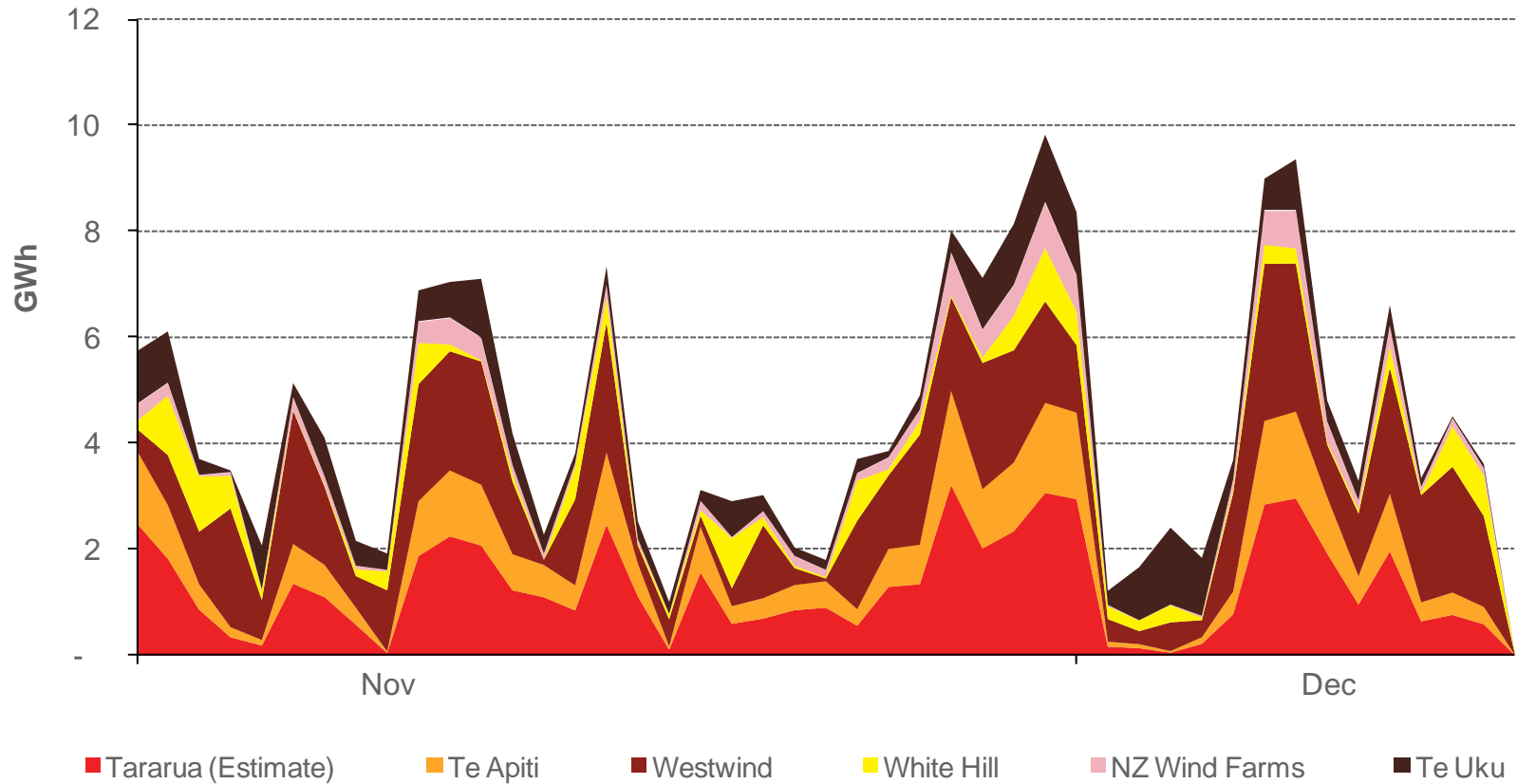


Benmore futures settlement price (ASX settlement)



Wind generation

Daily wind generation (SCADA)



Monthly demand comparison

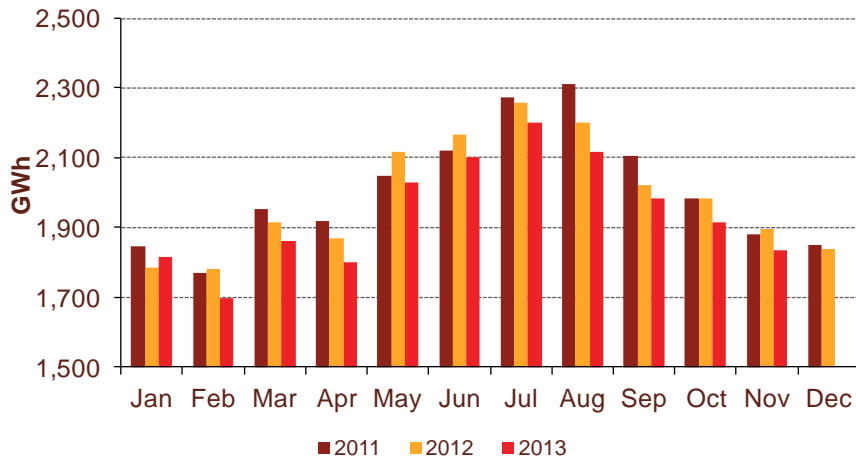
• **NIWA's national climate summary for November 2013 reports:**

- The New Zealand national average temperature in November was 15.1°C (1.4°C above the 1971-2000 average)

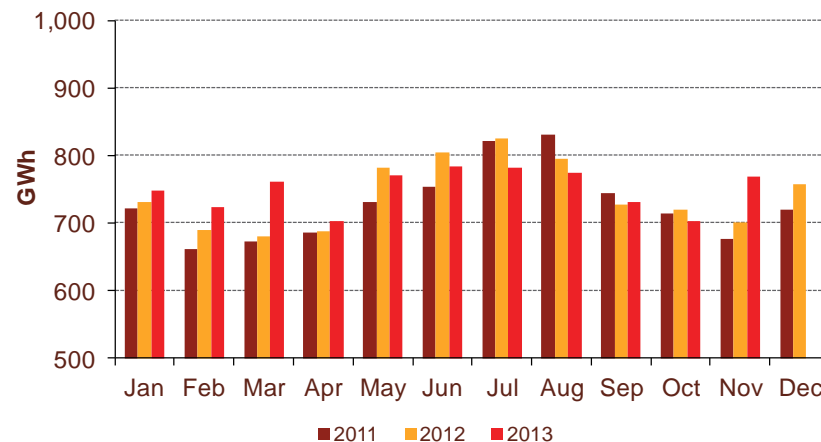
Demand	12 months to date			Growth rate		November demand			Growth rate	
	GWh			% p.a.		GWh			% p.a.	
	2013	2012	2011	1 year	2 year	2013	2012	2011	1 year	2 year
North Island	23,191	23,847	24,084	(2.7%)	(1.9%)	1,835	1,895	1,879	(3.2%)	(1.2%)
South Island excluding Tiwai	9,002	8,862	8,790	1.6%	1.2%	768	700	677	9.7%	6.5%
Total	32,194	32,709	32,874	(1.6%)	(1.0%)	2,603	2,595	2,556	0.3%	0.9%

Source: SCADA data

North Island



South Island excluding Tiwai



Contact Netback, Net Purchase Cost and LPG Data

Data	Measure	The month ended November 2013	The month ended November 2012	The month ended October 2013	Five months ended November 2013	Five months ended November 2012	
Netback	Mass market electricity sales	GWh	282	304	324	1,755	1,901
	Commercial & industrial electricity sales	GWh	391	356	405	1,915	1,704
	Retail gas sales	GWh	33	47	69	323	346
	Steam sales	GWh	56	68	71	290	301
	Total retail sales	GWh	761	775	869	4,284	4,252
	Average electricity sales price	\$/MWh	162.68	167.78	170.06	181.45	183.67
	Electricity direct pass through costs	\$/MWh	66.89	62.16	64.84	70.51	70.29
	Electricity and gas cost to serve ²	\$/MWh	13.41	12.64	12.61	11.58	11.27
	Netback ²	\$/MWh	76.68	84.00	82.00	87.26	89.05
	Actual electricity line losses	%	2%	5%	6%	3%	4%
	Retail gas sales	PJ	0.1	0.2	0.2	1.2	1.2
	Electricity customer numbers ¹		437,500	443,000	438,500	438,500	443,000
	Gas customer numbers ¹		62,500	63,500	62,000	62,000	63,000
Net Purchase Cost	Thermal generation	GWh	205	237	209	1,465	1,542
	Geothermal generation	GWh	164	189	190	919	954
	Hydro generation	GWh	325	289	355	1,781	1,520
	Spot market generation	GWh	694	715	754	4,166	4,017
	Swaption	GWh	-	44	-	-	182
	Spot electricity purchases	GWh	674	681	768	3,753	3,717
	CfD sales	GWh	(26)	18	28	206	255
	GWAP	\$/MWh	33.40	52.02	31.54	47.56	56.03
	LWAP	\$/MWh	39.21	61.49	38.66	52.00	62.75
	LWAP/GWAP	%	117%	118%	123%	109%	112%
	Gas used in internal generation	PJ	1.9	2.2	1.9	12.6	13.6
	Wholesale gas sales	PJ	0.3	0.3	0.3	1.2	1.3
	Gas storage net movement	PJ	0.1	(0.6)	0.4	1.2	(1.0)
	Unit generation cost ²	\$/MWh	43.71	48.56	43.30	45.42	49.30
	Net purchase cost ²	\$/MWh	34.66	42.24	38.46	39.14	45.26
LPG	LPG sales	tonnes	4,889	5,345	5,504	29,189	31,617
	LPG customer numbers (includes franchises) ¹		65,000	63,000	65,000	65,000	62,500

¹ Data has been rounded to the nearest 500 and reflects numbers as at month end.

² June 2013 operating statistics have been restated to reclassify restructuring costs as significant items