



For personal use only

To	Company Announcements Office	Facsimile	1300 135 638
Company	ASX Limited	Date	18 November 2013
From	Helen Hardy	Pages	8
Subject	Contact Energy Monthly Operational Data October 2013		

Attached herewith is a copy of an announcement released to the NZX by Contact Energy today.

Origin Energy holds 53.09% of quoted ordinary shares in Contact Energy Limited.

Regards

A handwritten signature in black ink, appearing to read "Helen Hardy".

Helen Hardy  
Company Secretary

02 8345 5441 - [helen.hardy@originenergy.com.au](mailto:helen.hardy@originenergy.com.au)

**Contact**<sup>TM</sup>

**Monthly Operational Data**

**For the month ended 31 October 2013**

**October 2013**



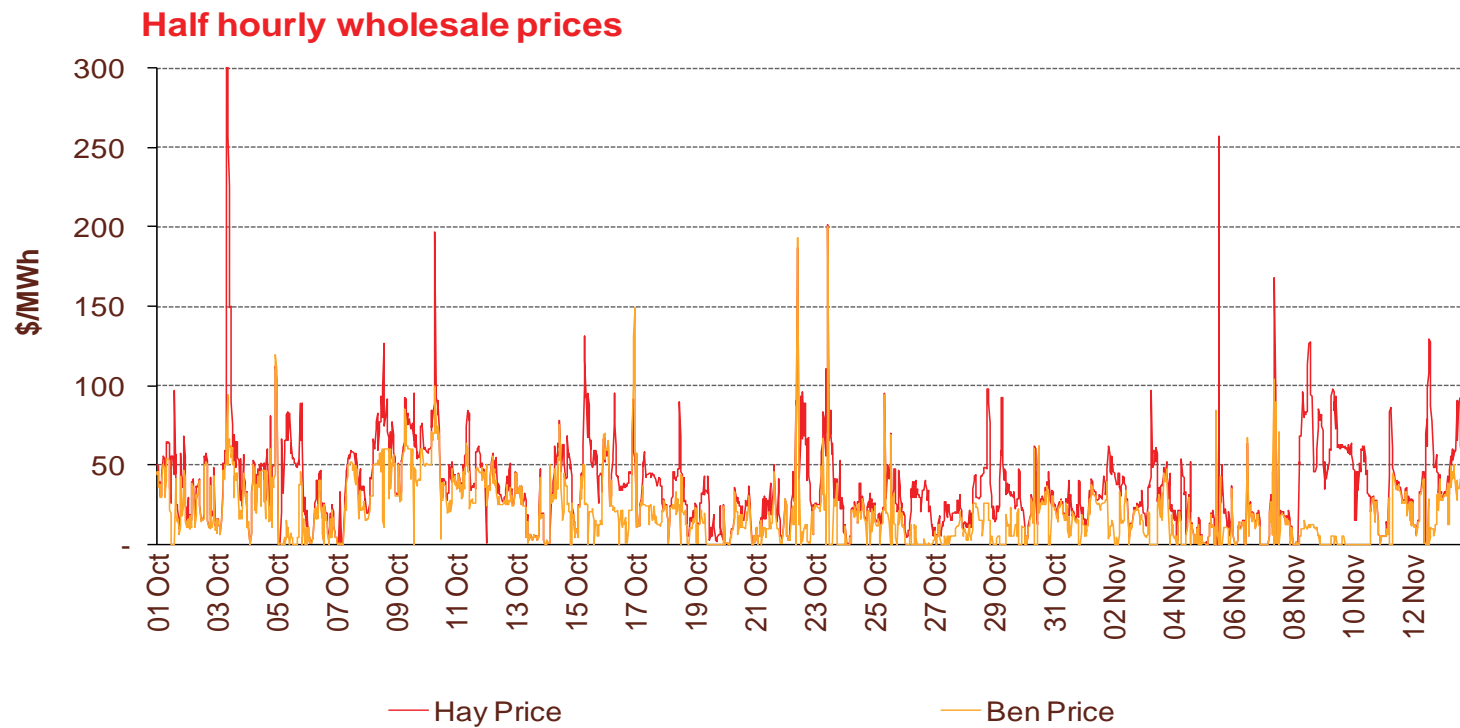
# Highlights for October 2013

- **Hydro storage as at 31 October: South Island 178% of mean, North Island 113% of mean (p4)**
- **Average Haywards wholesale price for October 2013: \$38/MWh (p3)**
- **Otahuhu futures settlement wholesale price for 4th quarter 2013 (ASX) (p4):**
  - As at 14 November: \$35/MWh
  - As at 31 October: \$34/MWh
  - As at 30 September: \$51/MWh

# Wholesale electricity prices

For personal use only

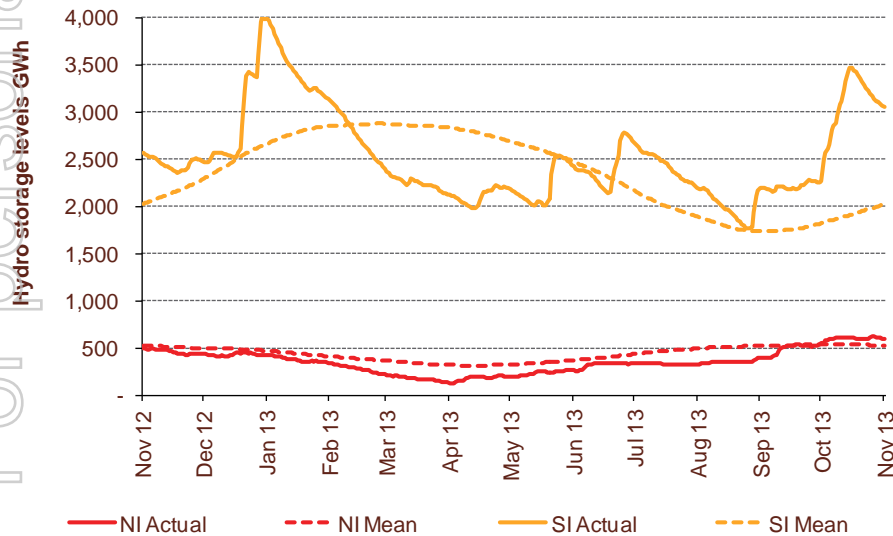
- The average price at Haywards (North Island) for the month of October 2013 was \$38/MWh while the average price at Benmore (South Island) was \$22/MWh.
- The average Haywards price from 1 November to 14 November 2013 was \$35/MWh. The average Benmore price over this period was \$14/MWh.



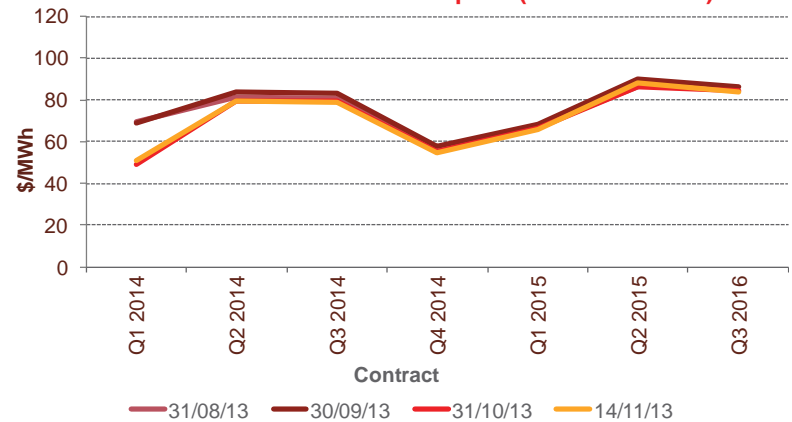
# Storage levels and wholesale electricity prices

- At 31 October 2013, South Island storage was 178% of mean (30 September: 125 %) and North Island storage was 113% of mean (30 September: 100%)
- As at 14 November 2013, storage was:
  - South Island: 151% of mean
  - North Island: 114% of mean

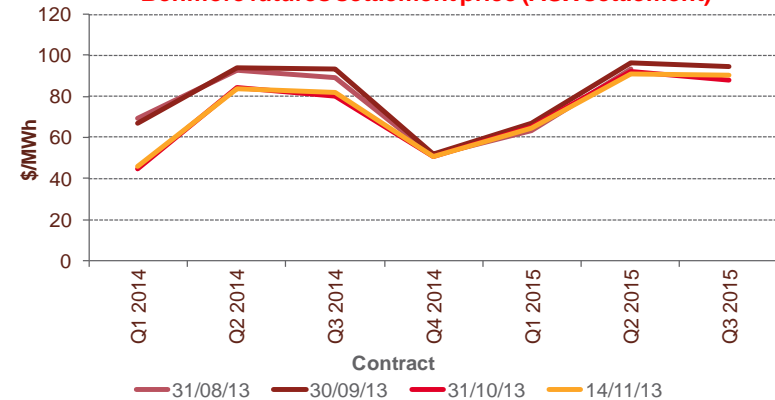
Hydro storage



Otago futures settlement price (ASX settlement)



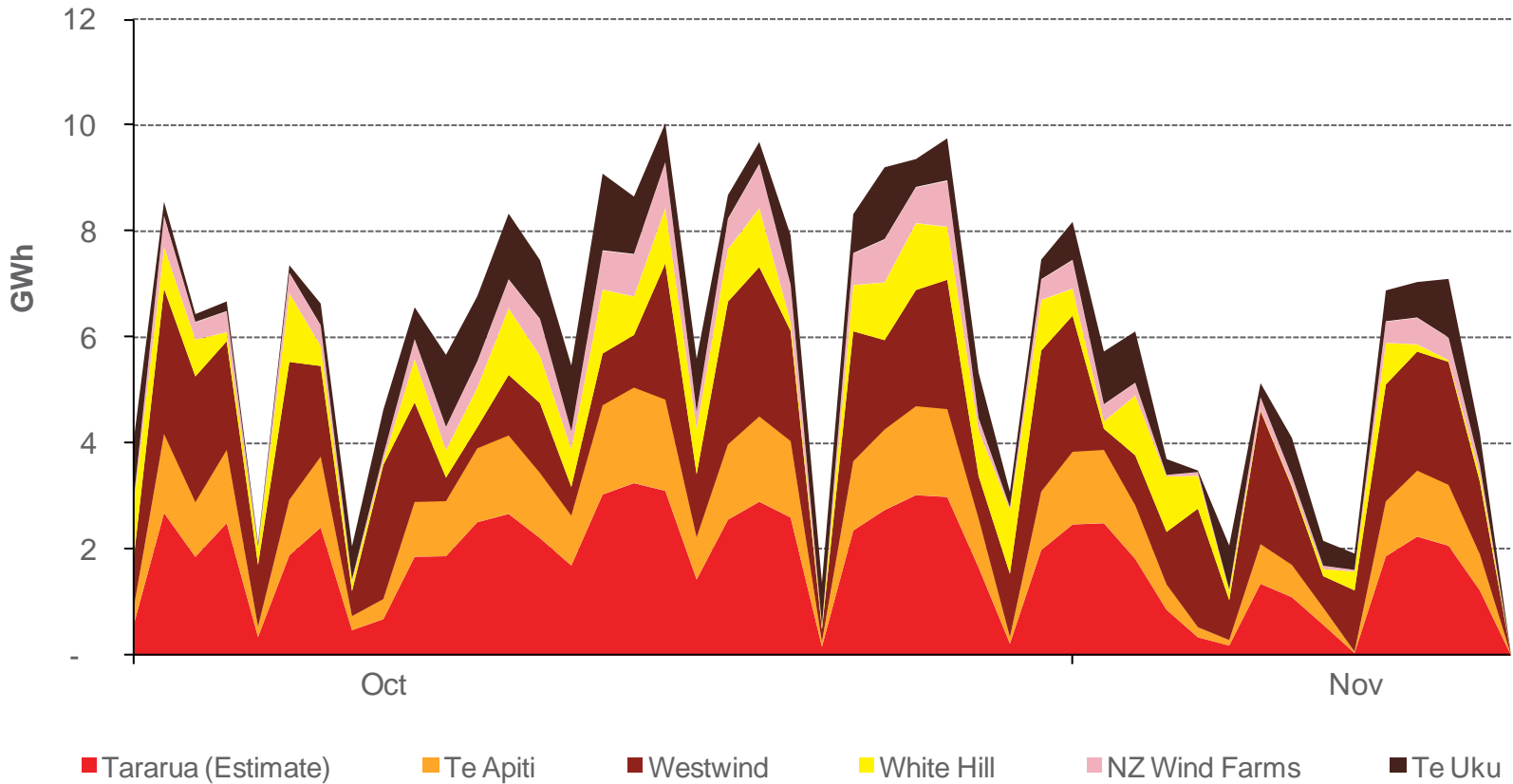
Benmore futures settlement price (ASX settlement)



# Wind generation

For personal use only

### Daily wind generation (SCADA)



# Monthly demand comparison

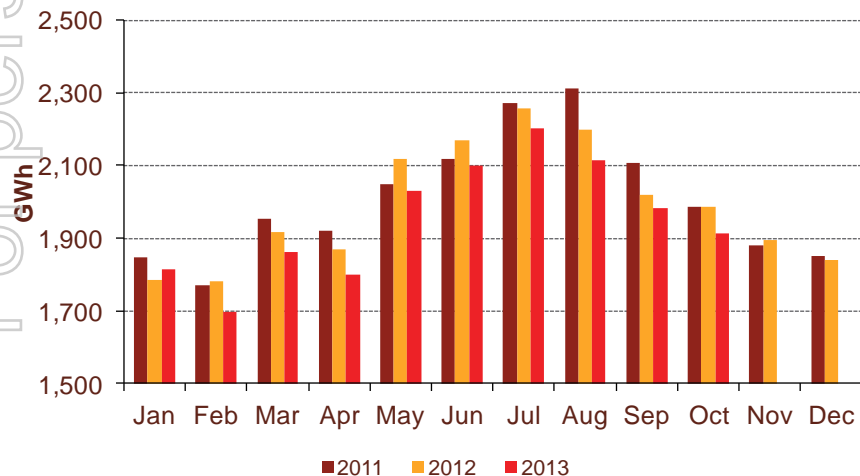
• NIWA's national climate summary for October 2013 reports:

- The New Zealand national average temperature in October was 12.9°C (0.8°C above the 1971-2000 July average)

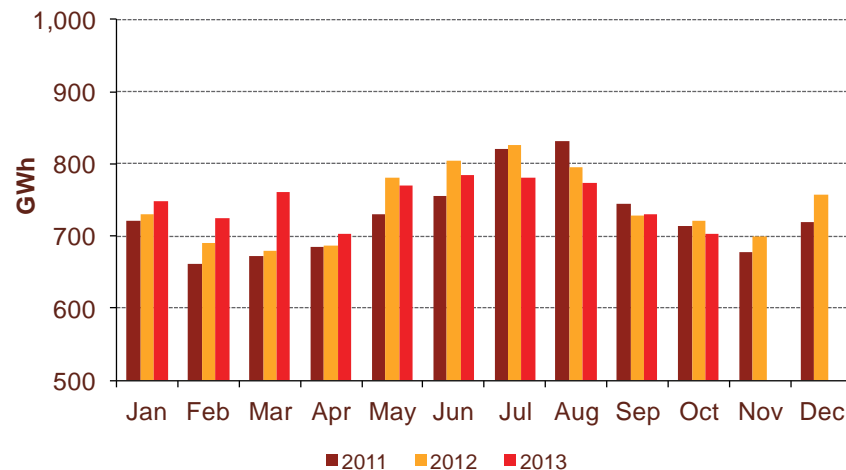
Demand	12 months to date			Growth rate		October demand			Growth rate	
	GWh			% p.a.		GWh			% p.a.	
	2013	2012	2011	1 year	2 year	2013	2012	2011	1 year	2 year
North Island	23,251	23,831	24,125	(2.4%)	(1.8%)	1,913	1,985	1,985	(3.6%)	(1.8%)
South Island excluding Tiwai	8,934	8,839	8,887	1.1%	0.3%	702	720	713	(2.5%)	(0.8%)
<b>Total</b>	<b>32,185</b>	<b>32,670</b>	<b>33,013</b>	<b>(1.5%)</b>	<b>(1.3%)</b>	<b>2,615</b>	<b>2,705</b>	<b>2,698</b>	<b>(3.3%)</b>	<b>(1.5%)</b>

Source: SCADA data

North Island



South Island excluding Tiwai



# Contact Netback, Net Purchase Cost and LPG Data

Data	Measure	The month ended October 2013	The month ended October 2012	The month ended September 2013	Four months ended October 2013	Four months ended October 2012	
Netback	Mass market electricity sales	GWh	324	340	344	1,473	1,597
	Commercial & industrial electricity sales	GWh	405	354	384	1,524	1,348
	Retail gas sales	GWh	69	56	65	291	299
	Steam sales	GWh	71	71	68	234	233
	Total retail sales	GWh	869	821	861	3,523	3,477
	Average electricity sales price	\$/MWh	170.06	172.84	180.70	185.66	187.24
	Electricity direct pass thru costs	\$/MWh	64.84	68.36	72.12	71.33	72.11
	Electricity and gas cost to serve <sup>2</sup>	\$/MWh	12.61	12.20	10.55	11.19	10.98
	Netback <sup>2</sup>	\$/MWh	82.00	82.33	87.31	90.09	90.73
	Actual electricity line losses	%	6%	4%	3%	4%	4%
	Retail gas sales	PJ	0.2	0.2	0.2	1.0	1.1
	Electricity customer numbers <sup>1</sup>		438,500	443,000	439,000	438,500	443,000
	Gas customer numbers <sup>1</sup>		62,000	63,500	62,500	62,000	63,000
Net Purchase Cost	Thermal generation	GWh	209	219	294	1,260	1,305
	Geothermal generation	GWh	190	193	177	755	765
	Hydro generation	GWh	355	369	309	1,457	1,231
	Spot market generation	GWh	754	780	780	3,471	3,301
	Swaption	GWh	-	22	-	-	138
	Spot electricity purchases	GWh	768	714	700	3,079	3,036
	CfD sales	GWh	28	5	34	232	237
	GWAP	\$/MWh	31.54	39.08	57.04	50.40	56.90
	LWAP	\$/MWh	38.66	46.68	62.11	54.80	63.03
	LWAP/GWAP	%	123%	119%	109%	109%	111%
	Gas used in internal generation	PJ	1.9	2.1	2.5	10.7	11.4
	Wholesale gas sales	PJ	0.3	0.3	0.4	0.9	1.0
	Gas storage net movement	PJ	0.4	(0.1)	0.1	1.2	(0.4)
	Unit generation cost <sup>2</sup>	\$/MWh	43.30	40.91	49.52	45.77	49.45
	Net purchase cost <sup>2</sup>	\$/MWh	38.46	37.54	42.43	40.11	45.94
LPG	LPG sales	tonnes	5,504	6,151	5,633	24,300	26,272
	LPG customer numbers (includes franchises) <sup>1</sup>		65,000	62,500	64,500	65,000	62,500

<sup>1</sup>Data has been rounded to the nearest 500 and reflects numbers as at month end.

<sup>2</sup>June 2013 operating statistics have been restated to reclassify restructuring costs as significant items