



To	Company Announcements Office	Facsimile	1300 135 638
Company	ASX Limited	Date	16 September 2013
From	Helen Hardy	Pages	8
Subject	CONTACT ENERGY MONTHLY OPERATIONAL DATA - AUGUST 2013		

Attached herewith is a copy of an announcement released to the NZX by Contact Energy today.

Origin Energy holds 53.09% of quoted ordinary shares in Contact Energy Limited.

Regards

A handwritten signature in black ink, appearing to read "Helen Hardy".

Helen Hardy  
Company Secretary

02 8345 5441 - [helen.hardy@originenergy.com.au](mailto:helen.hardy@originenergy.com.au)



## Monthly Operational Data

For the month ended 31 August 2013

August 2013

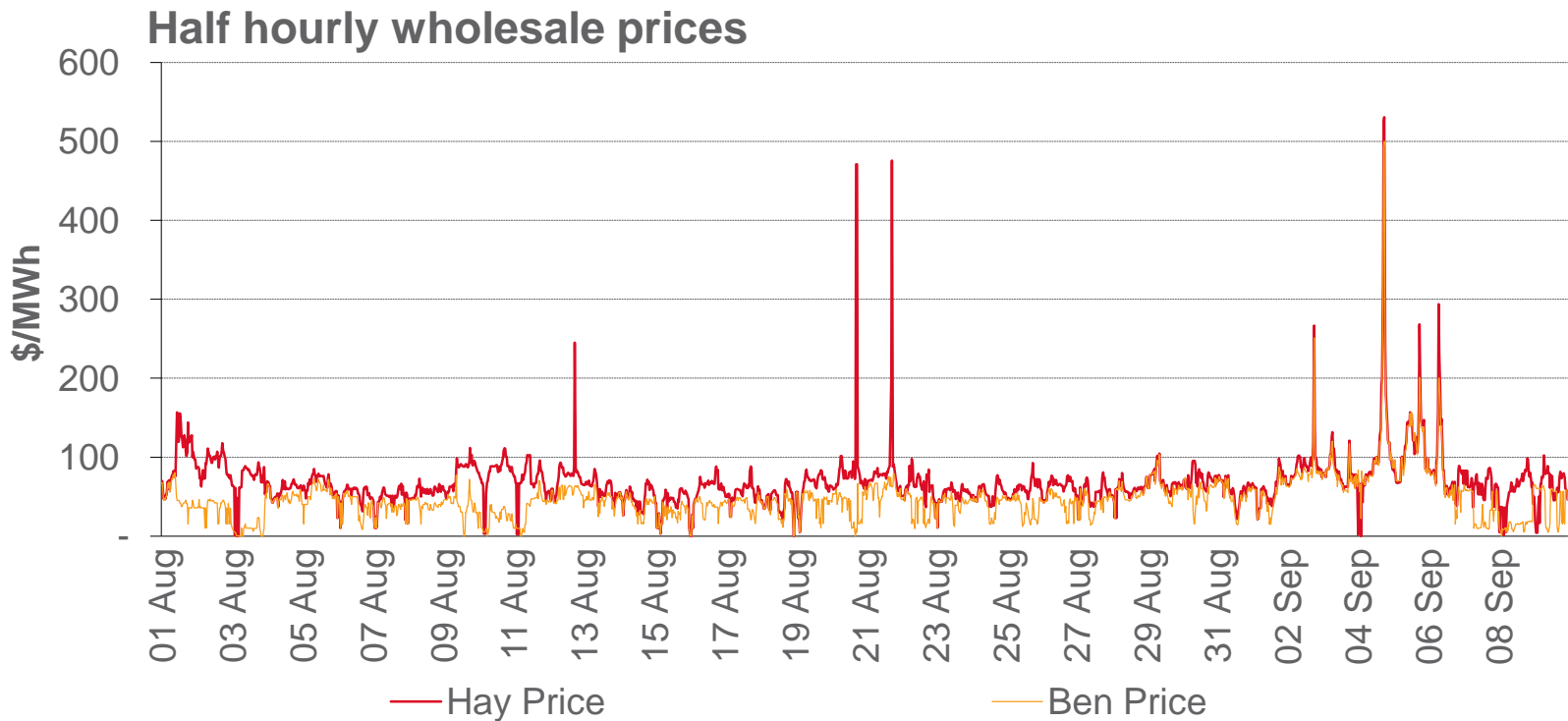
# Highlights for August 2013



- **Hydro storage as at 31 August: South Island 109% of mean, North Island 69% of mean (p4)**
- **Average Haywards wholesale price for August 2013: \$65/MWh (p3)**
- **Otahuhu futures settlement wholesale price for 3<sup>rd</sup> quarter 2013 (ASX) (p4):**
  - As at 10 September: \$66/MWh
  - As at 31 August: \$63/MWh
  - As at 31 July: \$66/MWh

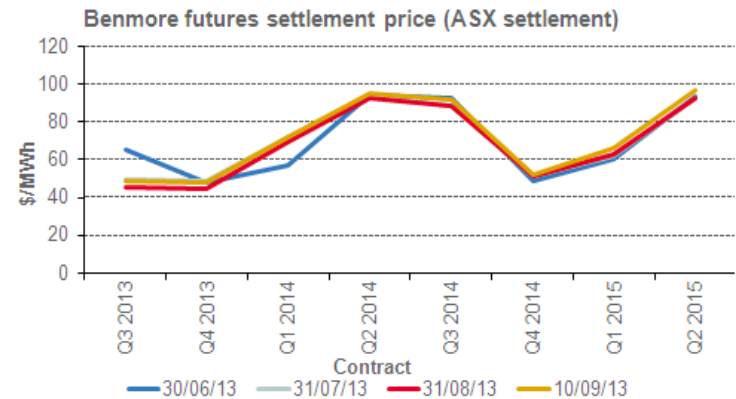
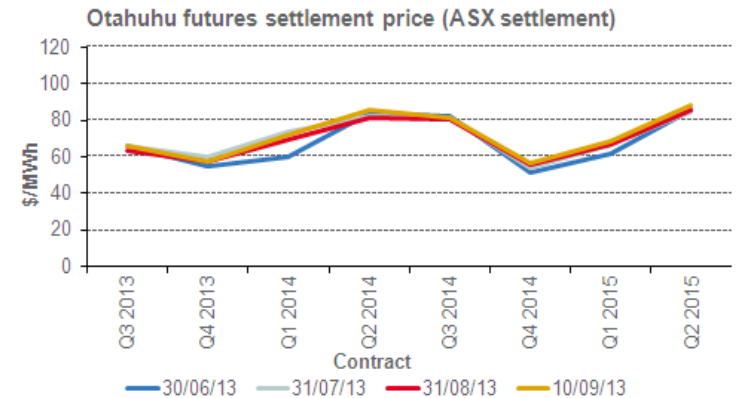
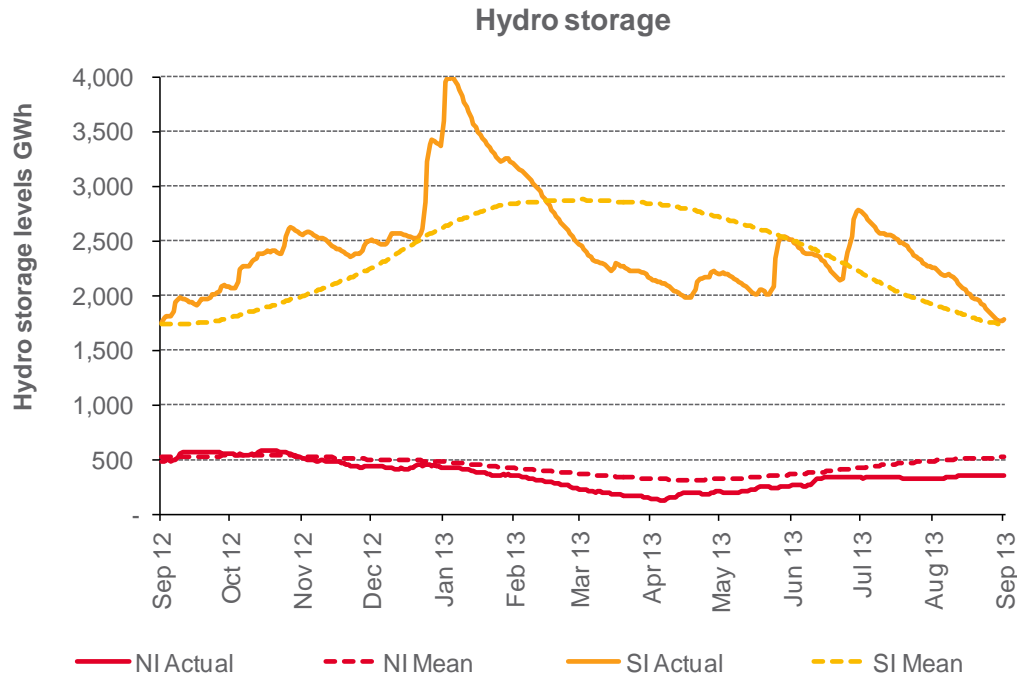
# Wholesale electricity prices

- The average price at Haywards (North Island) for the month of August 2013 was \$65/MWh while the average price at Benmore (South Island) was \$42/MWh.
- The average Haywards price from 1 September to 9 September 2013 was \$81/MWh. The average Benmore price over this period was \$67/MWh.



# Storage levels and wholesale electricity prices

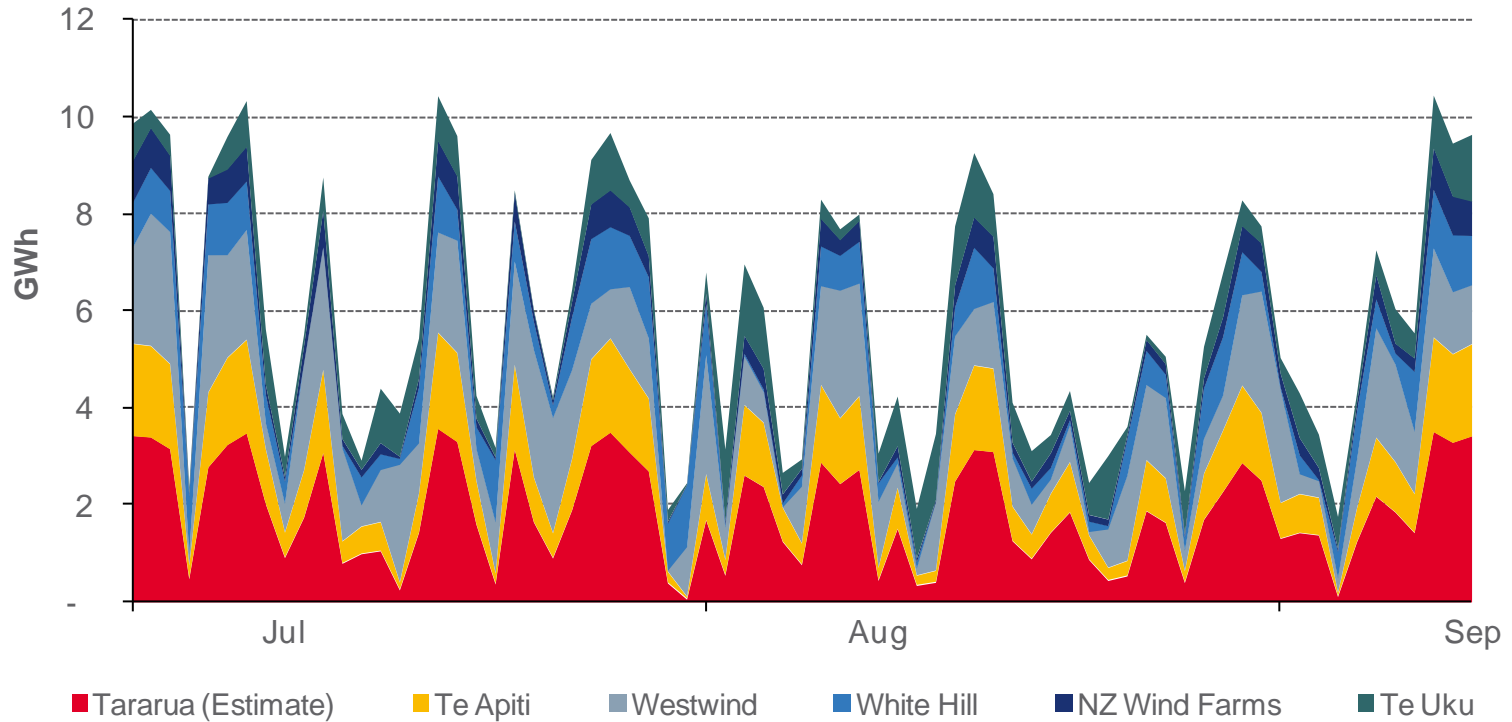
- At 31 August 2013, South Island storage was 109% of mean (31 July: 122%) and North Island storage was 69% of mean (31 July: 70%)
- As at 9 September 2013, storage was:
  - South Island: 102% of mean
  - North Island: 68% of mean



# Wind generation



## Daily wind generation (SCADA)



# Monthly demand comparison

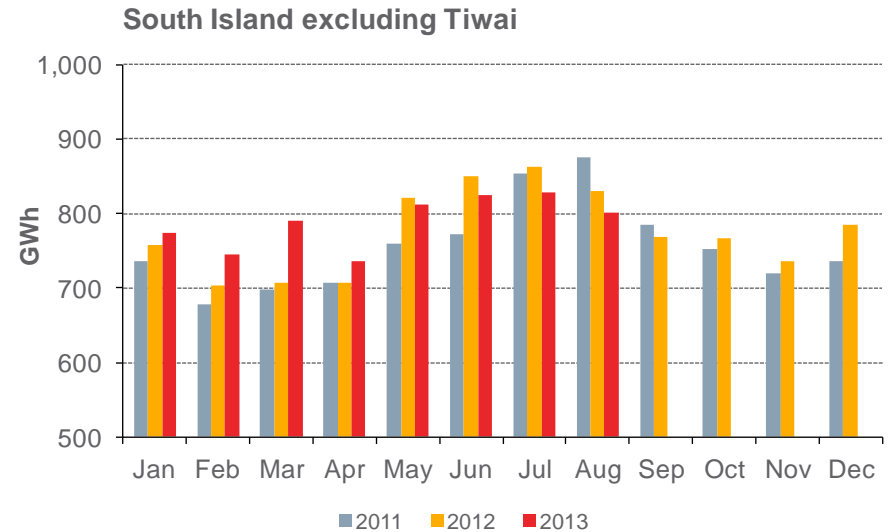
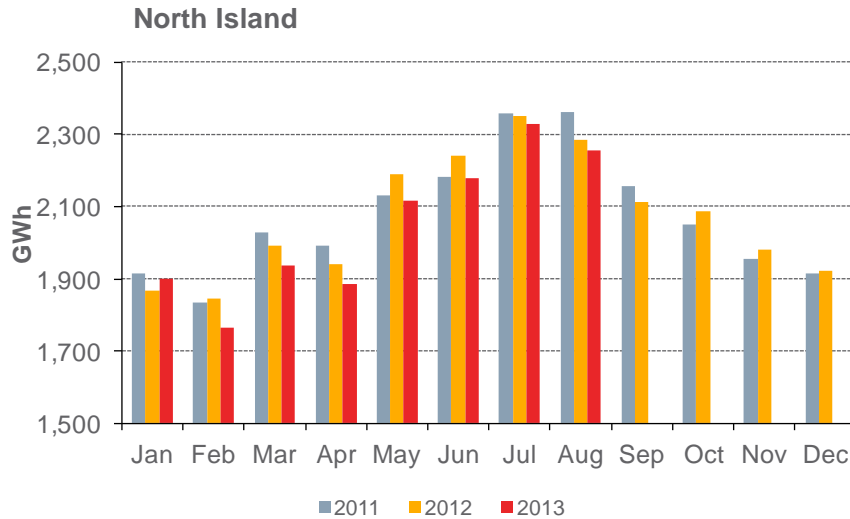


## NIWA's National Climate Summary for August 2013 reports:

- The New Zealand national average temperature in August was 10.6°C (1.9°C above the 1971-2000 July average)

Demand	12 months to date			Growth rate		August demand			Growth rate	
	GWh			% p.a.		GWh			% p.a.	
	2013	2012	2011	1 year	2 year	2013	2012	2011	1 year	2 year
North Island	24,471	24,793	24,948	(1.3%)	(1.0%)	2,255	2,285	2,363	(1.3%)	(2.3%)
South Island excluding Tiwai	9,368	9,231	9,254	1.5%	0.6%	802	830	875	(3.4%)	(4.3%)
<b>Total</b>	<b>33,839</b>	<b>34,024</b>	<b>34,202</b>	<b>(0.5%)</b>	<b>(0.5%)</b>	<b>3,056</b>	<b>3,115</b>	<b>3,238</b>	<b>(1.9%)</b>	<b>(2.8%)</b>

Source: SCADA data



# Contact Netback, Net Purchase Cost and LPG Data



Data		Measure	The month ended 31 August 2013	The month ended 31 August 2012	The month ended 31 July 2013	Two months ended 31 August 2013	Two months ended 31 August 2012
Netback	Mass market electricity sales	GWh	374	428	431	805	893
	Commercial & industrial electricity sales	GWh	380	344	356	736	654
	Retail gas sales	GWh	70	85	87	157	176
	Steam sales	GWh	68	65	27	95	94
	Total retail sales	GWh	893	921	901	1,793	1,817
	Average electricity sales price	\$/MWh	189.22	194.16	201.27	195.38	196.48
	Electricity direct pass thru costs	\$/MWh	77.20	77.33	70.98	74.02	73.32
	Electricity and gas cost to serve	\$/MWh	11.23	10.45	10.41	10.81	10.27
	Netback	\$/MWh	89.04	93.75	108.11	97.55	99.35
	Actual electricity line losses	%	7%	3%	4%	5%	3%
	Retail gas sales	PJ	0.3	0.3	0.3	0.6	0.6
	Electricity customer numbers <sup>1</sup>		438,000	443,000	439,000		
Gas customer numbers <sup>1</sup>		62,000	63,000	61,500			
Net Purchase Cost	Thermal generation	GWh	400	355	357	757	719
	Geothermal generation	GWh	194	197	195	388	402
	Hydro generation	GWh	360	235	432	792	519
	Spot market generation	GWh	953	787	984	1,937	1,640
	Swaption	GWh	-	53	-	-	116
	Spot electricity purchases	GWh	798	786	814	1,612	1,587
	CfD sales	GWh	46	81	123	169	157
	GWAP	\$/MWh	56.17	64.02	53.99	55.06	71.67
	LWAP	\$/MWh	61.88	68.73	56.81	59.32	76.16
	LWAP/GWAP	%	110%	107%	105%	108%	106%
	Gas used in internal generation	PJ	3.3	3.1	2.9	6.3	6.2
	Wholesale gas sales	PJ	0.2	0.2	0.0	0.2	0.4
	Gas storage net movement	PJ	0.2	(0.1)	0.5	0.7	(0.2)
	Unit generation cost	\$/MWh	48.51	56.11	41.95	45.17	53.32
Net purchase cost	\$/MWh	44.90	51.11	34.63	39.74	50.35	
LPG	LPG sales	tonnes	6,162	6,725	7,001	13,163	14,038
	LPG customer numbers (includes franchises) <sup>1</sup>		65,000	62,000	65,000		

<sup>1</sup> Data has been rounded to the nearest 500 and reflects numbers as at month end.