



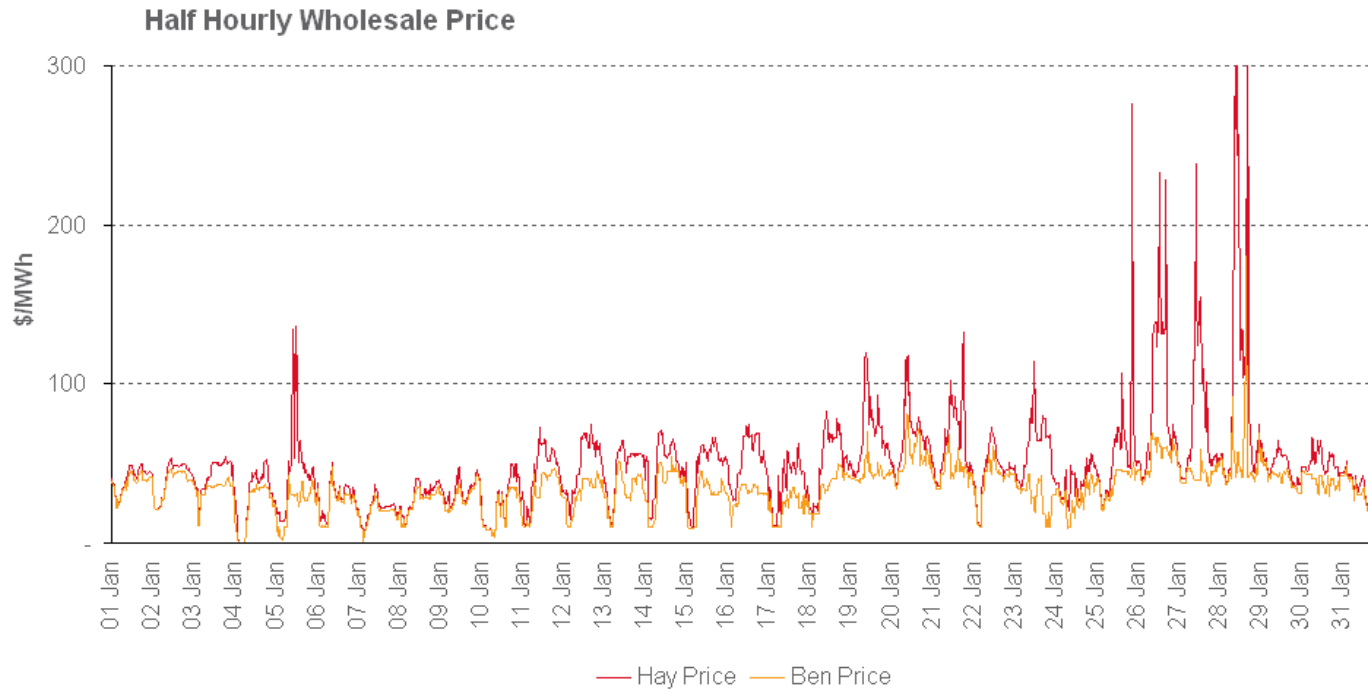
Monthly Operational Data

For the month ending 31 January 2010

January 2010

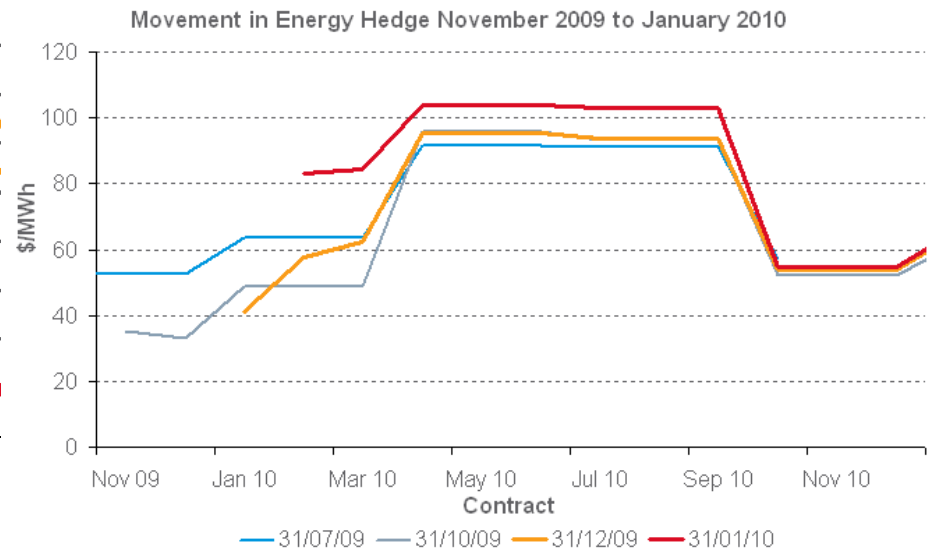
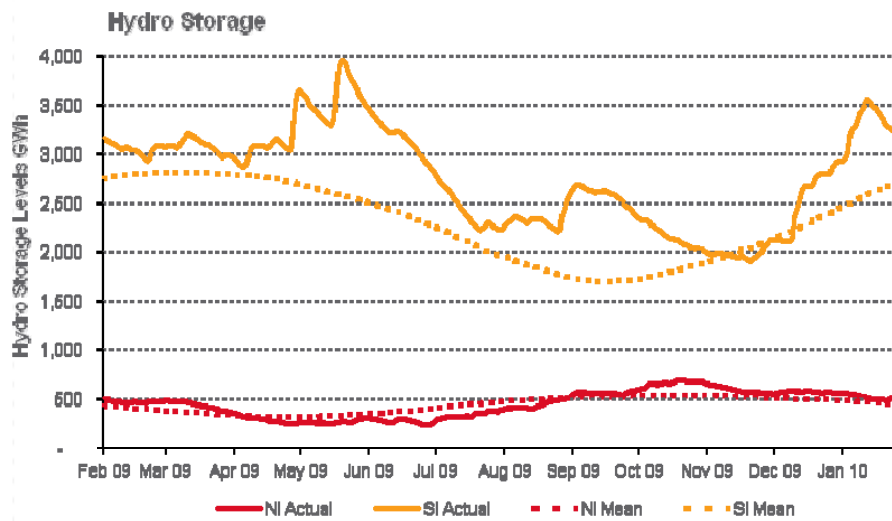
Wholesale Electricity Prices – January 2010

- The average price at Haywards (North Island) for the month of January 2010 was \$49/MWh while the average price at Benmore (South Island) was \$34/MWh

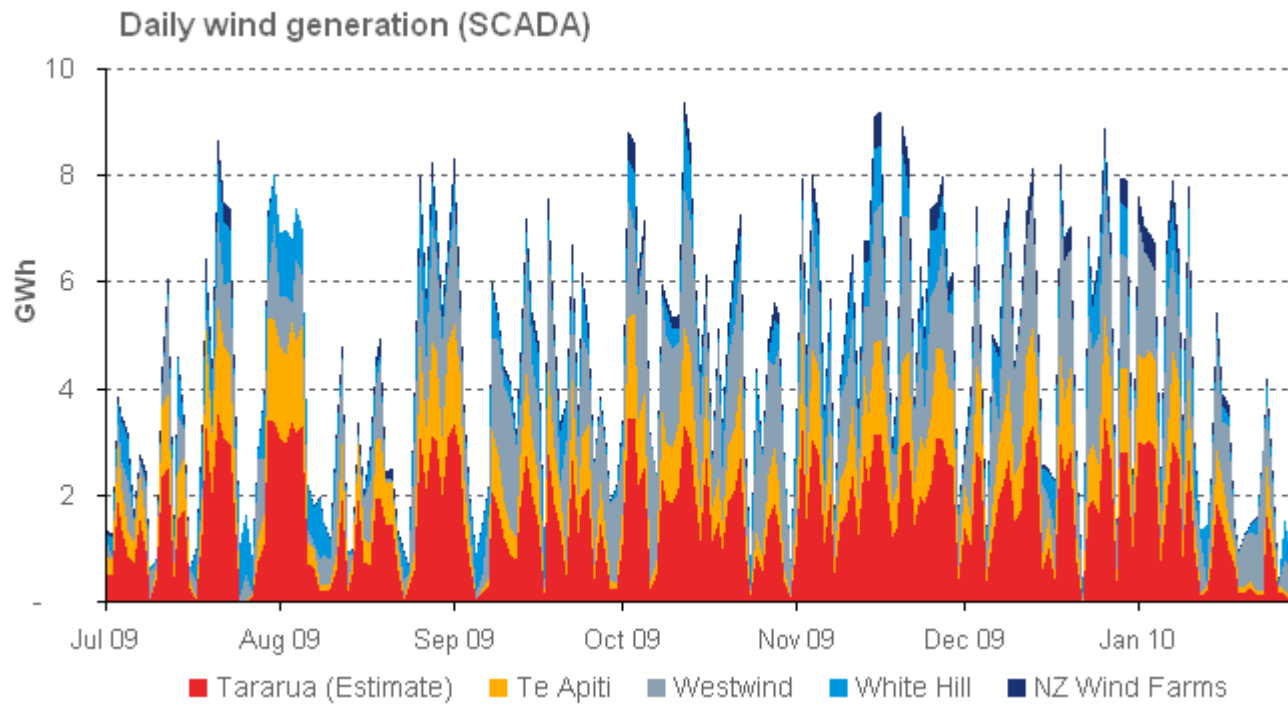


Storage levels and wholesale electricity prices

- Storage is above mean in the South and just above mean in the North Island



Wind generation

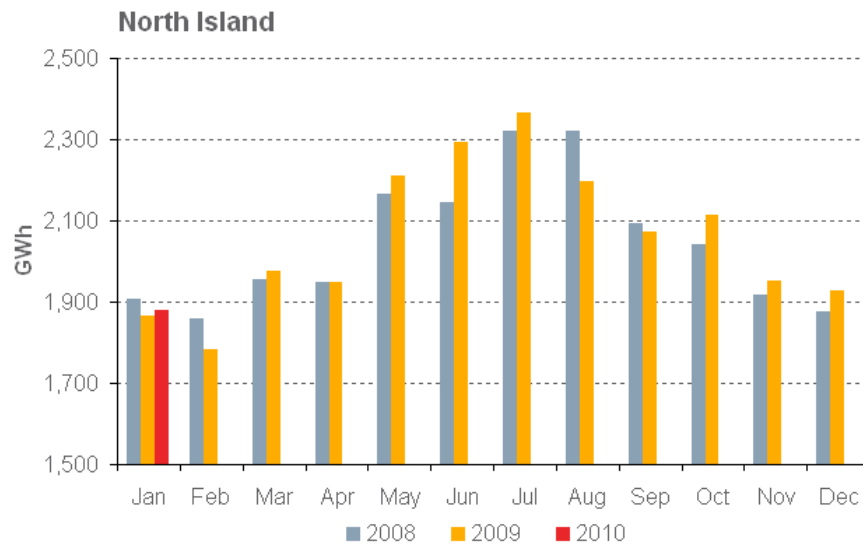


Monthly demand comparison: January 2010

- NIWA's National Climate Summary for January 2010 reports:
 - New Zealand experienced near average temperatures across most of the country with a national average of 16.7°C (0.4°C below the long-term January average).

	Year to date			Growth rate YTD		January demand			Growth rate Jan	
	GWh			% p.a.		GWh			% p.a.	
	2010	2009	2008	1 year	2 year	2010	2009	2008	1 year	2 year
North Island	1,881	1,864	1,905	0.9%	(0.6%)	1,881	1,864	1,905	0.9%	(0.6%)
South Island excluding Tiwai	755	786	773	(4.0%)	(1.2%)	755	786	773	(4.0%)	(1.2%)
Total	2,636	2,650	2,679	(0.5%)	(0.8%)	2,636	2,650	2,679	(0.5%)	(0.8%)

Source: SCADA data



Contact Generation and Retail data

Data		Measure	The month ending 31 January 2010	The month ending 31 January 2009	7 months ended 31 January 2010	7 months ended 31 January 2009
Generation	Thermal generation	GWh	157	260	2,114	2,473
	Geothermal generation	GWh	186	192	1,344	1,339
	Hydro generation	GWh	422	332	2,309	2,025
	Total generation	GWh	765	783	5,766	5,837
	Average National wholesale electricity price ¹	\$/MWh	40.39	25.79	41.36	65.83
Retail Purchases	Total electricity purchases	GWh	593	601	4,532	4,866
	Average National electricity purchase price ²	\$/MWh	49.46	29.04	46.56	78.91
Other	Retail electricity sales	GWh	571	573	4,447	4,620
	Gas used in internal generation	PJ	1.5	2.2	17.2	20.5
	Retail gas sales	PJ	0.2	0.2	2.2	2.5
	Wholesale gas sales	PJ	0.6	1.0	7.0	7.3
	LPG sales	tonnes	4,470	4,453	42,602	46,109

¹ This is the price received by Contact for its generation. It excludes contracts for differences.

² This price excludes contracts for differences.



Additional Information – North Island and South Island Split



Data		Measure	The month ending 31 January 2010	The month ending 31 January 2009	7 months ended 31 January 2010	7 months ended 31 January 2009
Generation	Average North Island wholesale electricity price ¹	\$/MWh	51.29	38.97	46.80	70.48
	Average South Island wholesale electricity price ¹	\$/MWh	31.79	8.21	33.35	57.23
	Average National wholesale electricity price ¹	\$/MWh	40.39	25.79	41.36	65.83
Retail Purchases	North Island electricity purchases	GWh	347	322	2,551	2,588
	South Island electricity purchases	GWh	246	280	1,981	2,277
	Total electricity purchases	GWh	593	601	4,532	4,866
	Average North Island electricity purchase price ²	\$/MWh	58.60	44.36	52.93	71.70
	Average South Island electricity purchase price ²	\$/MWh	36.59	11.42	38.35	87.10
	Average National electricity purchase price ²	\$/MWh	49.46	29.04	46.56	78.91

¹ This is the price received by Contact for its generation. It excludes contracts for differences.
² This price excludes contracts for differences.



Customer numbers



	As at 31 January 2010	As at 31 December 2009	As at 31 January 2009
Electricity customer numbers	481,000	478,000	496,500
Gas customer numbers	65,000	64,500	69,000
LPG customer numbers (includes franchisees)	56,000	56,000	54,000

