



Monthly Operational Data

For the month ending 30 June 2010

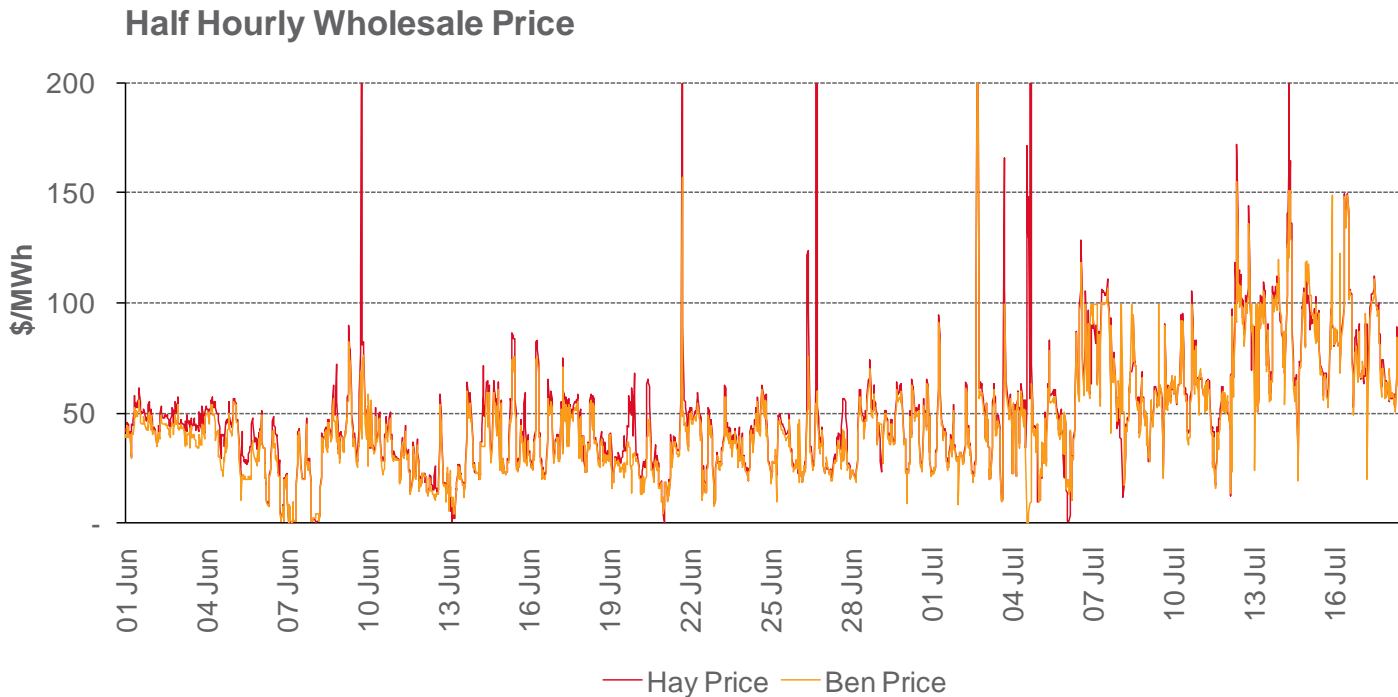
June 2010

Highlights for June 2010

- High hydro inflows (p4) and soft demand (p6)
- North and South Island storage: now at mean (p4)
- GWAP: \$39/MWh (p3)
- Energyhedge forecast wholesale price for July (p4):
 - as at today: \$65/MWh
 - as at 30 June: \$61/MWh
 - as at 31 May: \$68/MWh
 - as at 30 April: \$73/MWh

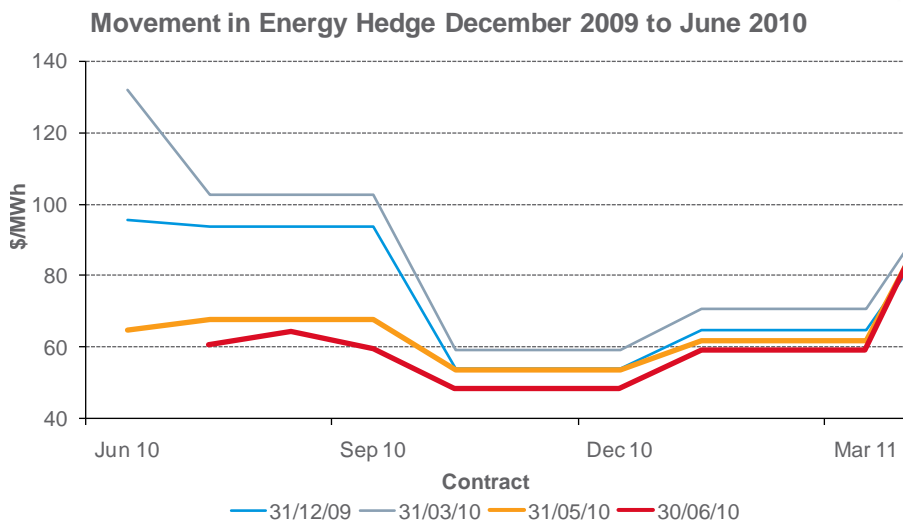
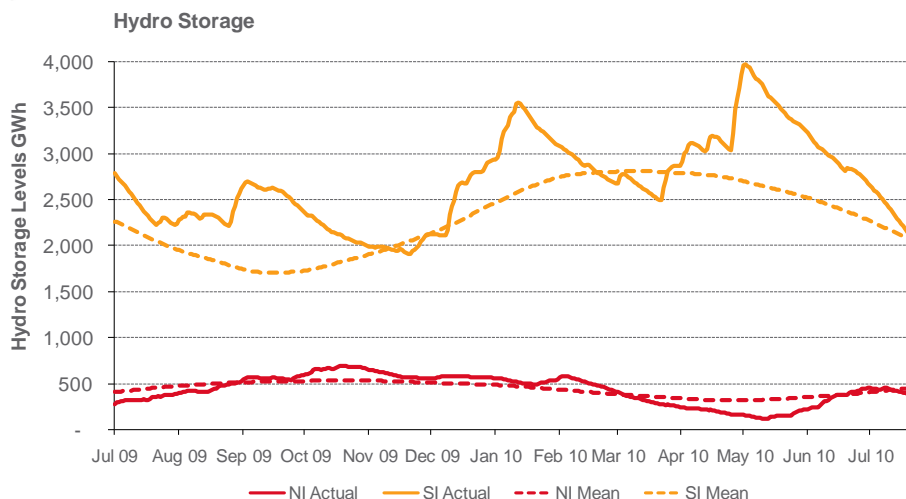
Wholesale Electricity Prices – June 2010 and July MTD

- The average price at Haywards (North Island) for the month of June 2010 was \$39/MWh while the average price at Benmore (South Island) was \$35/MWh
- The average Haywards price for the month to 19th July was \$79/MWh while the average Benmore price was \$65/MWh

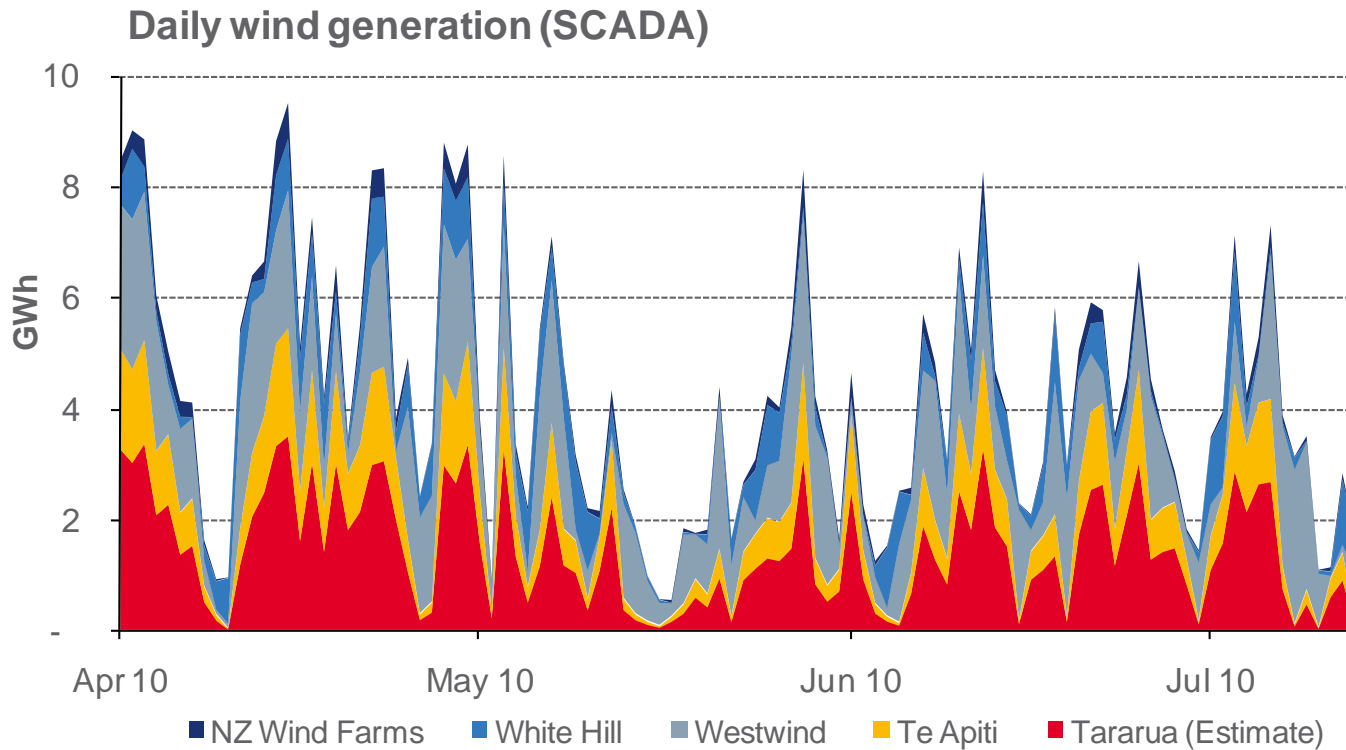


Storage levels and wholesale electricity prices

- At 30 June 2010, North Island storage was 112% of mean (31 May: 60%) and South Island storage was 117% of mean (31 May: 128%)
- As at the date of this report, storage was:
 - North Island: 86% of mean
 - South Island: 103% of mean



Wind generation



Monthly demand comparison: June 2010

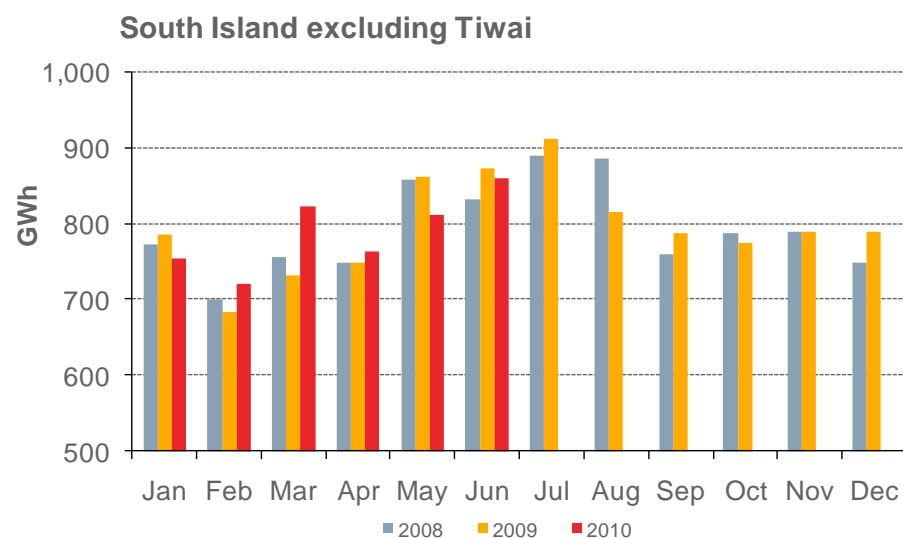
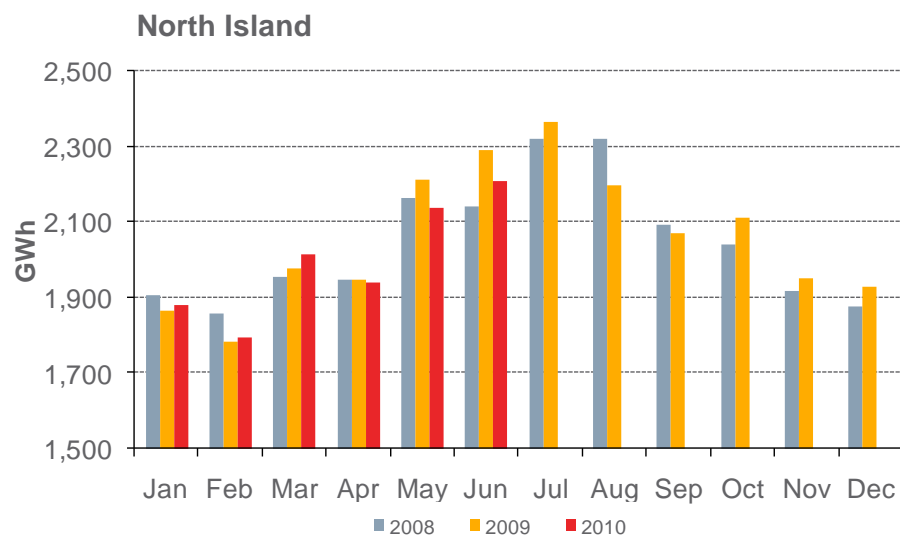


NIWA's National Climate Summary for June 2010 reports:

- The New Zealand national average temperature was 8.8°C (+0.3°C above the 1971-2000 June average)

	Year to date			Growth rate YTD		June demand			Growth rate June	
	GWh			% p.a.		GWh			% p.a.	
	2010	2009	2008	1 year	2 year	2010	2009	2008	1 year	2 year
North Island	11,982	12,075	11,972	(0.8%)	0.0%	2,211	2,293	2,143	(3.6%)	1.6%
South Island excluding Tiwai	4,738	4,689	4,672	1.0%	0.7%	861	874	832	(1.5%)	1.7%
Total	16,720	16,764	16,645	(0.3%)	0.2%	3,072	3,167	2,976	(3.0%)	1.6%

Source: SCADA data



Contact Generation and Retail Data

Data		Measure	The month ending 30 June 2010	The month ending 30 June 2009	12 months ended 30 June 2010	12 months ended 30 June 2009
Generation	Thermal generation	GWh	415	415	3,654	4,094
	Geothermal generation	GWh	204	204	2,277	2,311
	Hydro generation	GWh	317	345	3,760	3,543
	Total generation	GWh	937	964	9,691	9,948
	Average National wholesale electricity price ¹	\$/MWh	38.62	58.11	52.23	56.08
Retail Purchases	Total electricity purchases	GWh	781	730	7,875	8,109
	Average National electricity purchase price ²	\$/MWh	42.16	60.52	58.95	65.79
Other	Retail electricity sales	GWh	696	654	7,590	7,609
	Gas purchases	PJ	4.8	4.3	52.0	50.3
	Gas paid & not taken	PJ	0.0	-	3.2	-
	Gas used in internal generation	PJ	3.2	3.1	29.5	33.4
	Retail gas sales	PJ	0.4	0.4	3.2	3.9
	Wholesale gas sales	PJ	1.1	0.7	10.7	11.1
	LPG sales	tonnes	7,261	8,447	70,327	77,082

¹ This is the price received by Contact for its generation. It excludes contracts for differences.

² This price excludes contracts for differences.

contact

Additional Information – North Island and South Island Split



Data		Measure	The month ending 30 June 2010	The month ending 30 June 2009	12 months ended 30 June 2010	12 months ended 30 June 2009
Generation	Average North Island wholesale electricity price ¹	\$/MWh	39.97	73.18	56.54	63.59
	Average South Island wholesale electricity price ¹	\$/MWh	36.00	31.16	45.54	42.71
	Average National wholesale electricity price ¹	\$/MWh	38.62	58.11	52.23	56.08
Retail Purchases	North Island electricity purchases	GWh	471	391	4,559	4,354
	South Island electricity purchases	GWh	310	339	3,316	3,755
	Total electricity purchases	GWh	781	730	7,875	8,109
	Average North Island electricity purchase price ²	\$/MWh	44.15	81.81	63.06	67.59
	Average South Island electricity purchase price ²	\$/MWh	39.13	35.97	53.30	63.70
	Average National electricity purchase price ²	\$/MWh	42.16	60.52	58.95	65.79

¹ This is the price received by Contact for its generation. It excludes contracts for differences.

² This price excludes contracts for differences.



Customer Numbers



	As at 30 June 2010	As at 31 May 2010	As at 30 June 2009
Electricity customer numbers	477,000	476,500	478,500
Gas customer numbers	63,500	64,000	66,500
LPG customer numbers (includes franchisees)	58,000	57,000	53,500

