



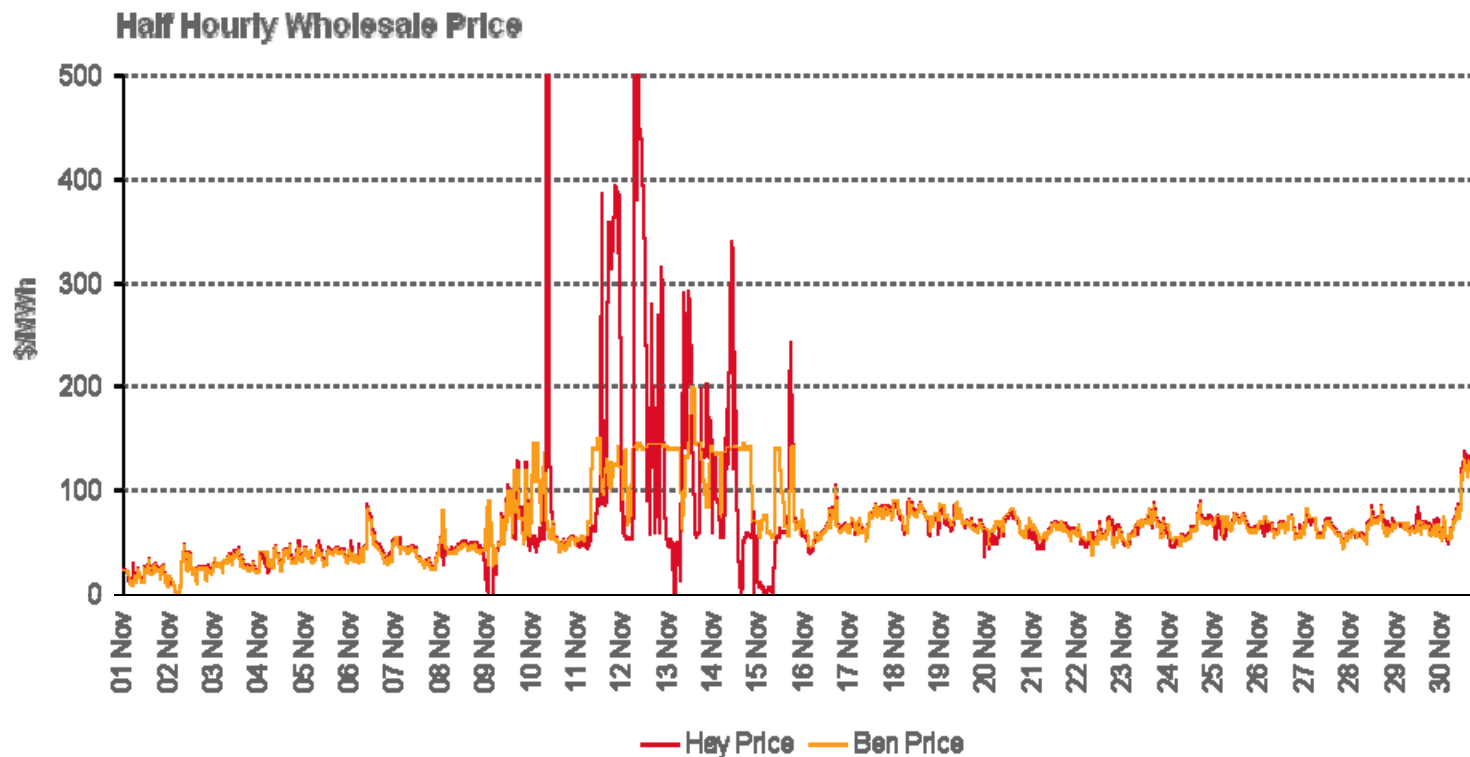
## Monthly Operational Data

For the month ending 30 November 2009

November 2009

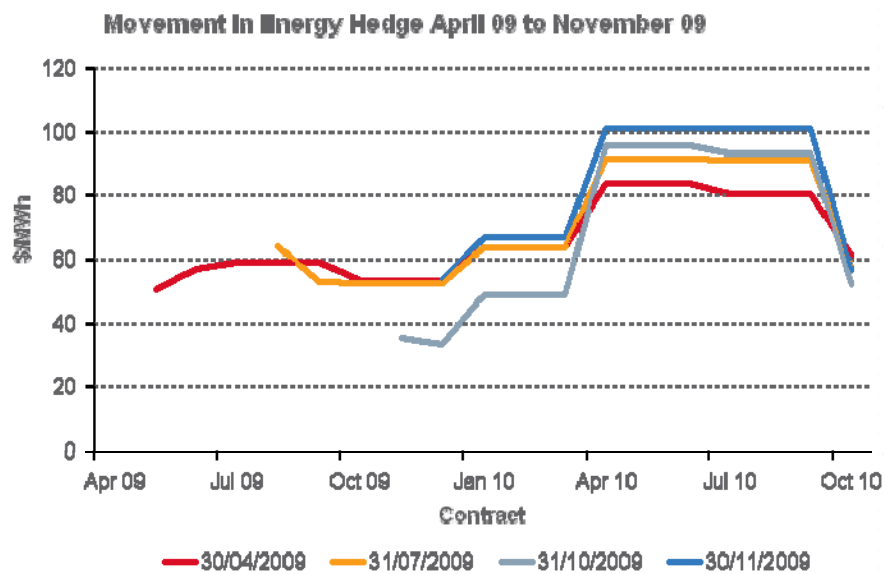
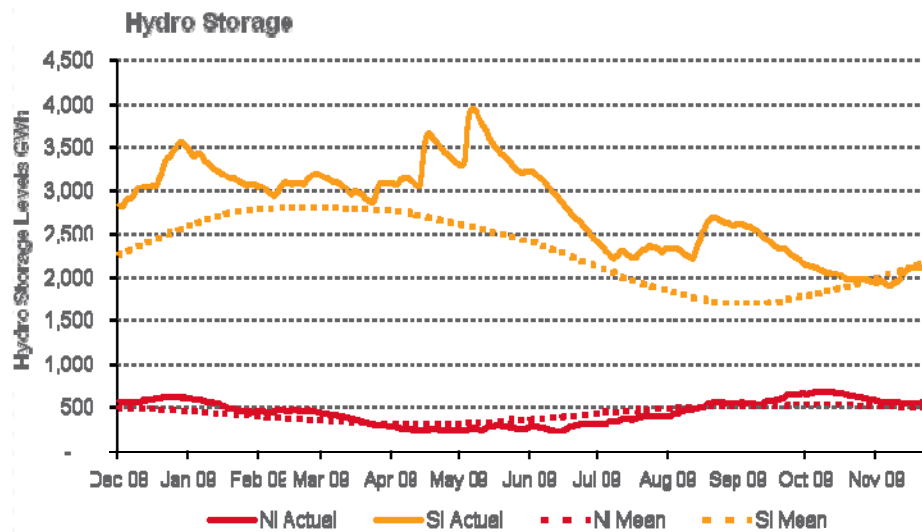
# Wholesale Electricity Prices – November 2009

- The average price at Haywards (North Island) for the month of November 2009 was \$71/MWh while the average price at Benmore (South Island) was \$67/MWh
- Peaks were driven by volatility in the market caused by a combination of high priced reserve, wind volatility, reduced availability of North Island generation and transmission outages

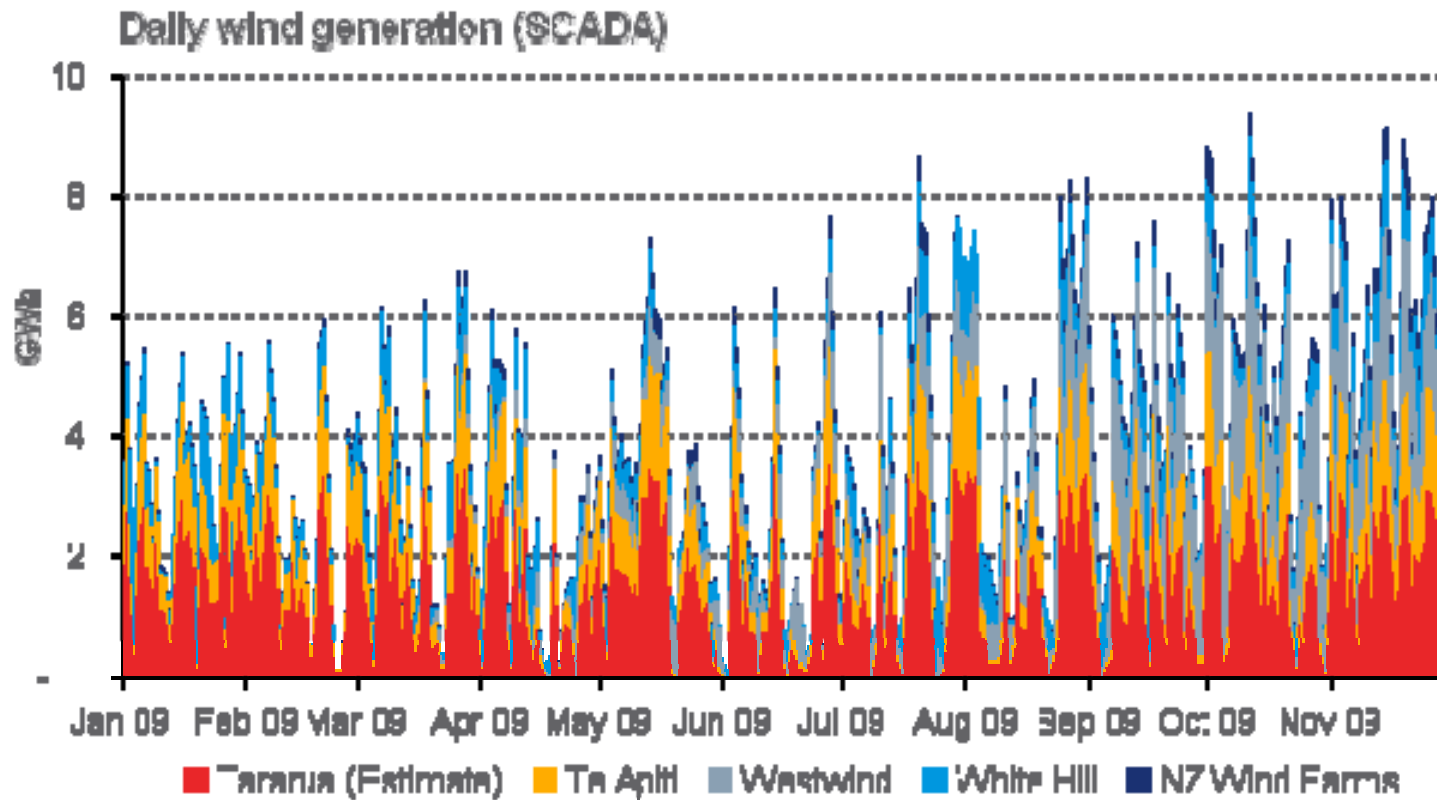


# Storage levels and wholesale electricity prices

- Storage is just above mean in the North and just below mean in the South Island



# Wind generation also continues to contribute to volatility

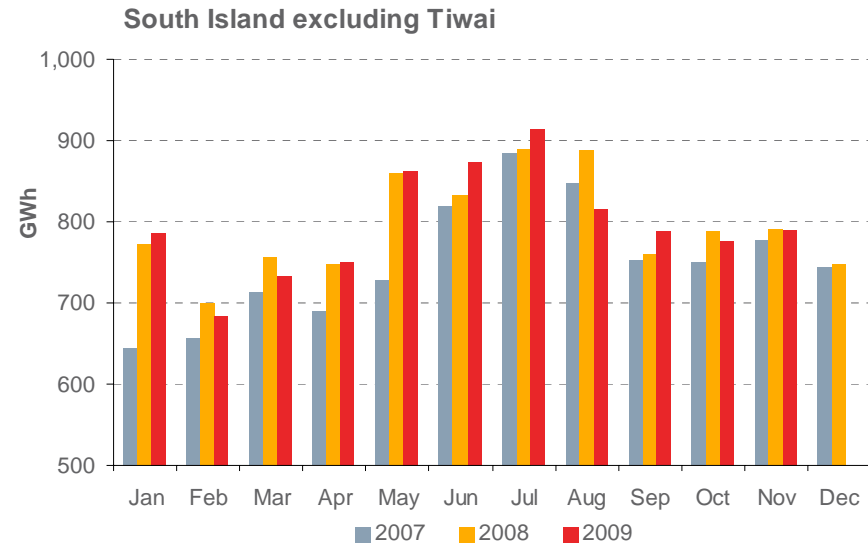
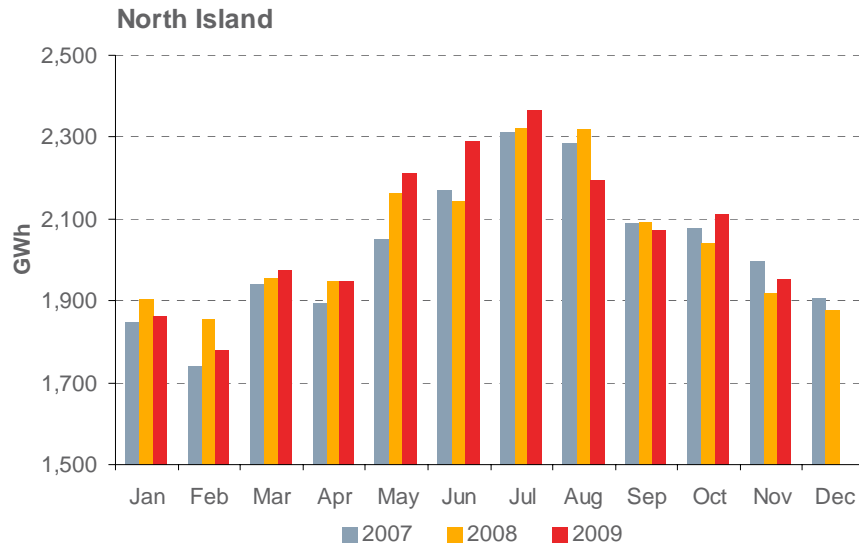


# Monthly demand comparison: November 2009

- NIWA's National Climate Summary for November 2009 reports:
  - New Zealand experienced temperatures near average across most of the country with a national average of 13.6°C (0.1°C below the long-term November average).

	Year to date			Growth rate YTD		November Demand			Growth rate Nov	
	GWh			% p.a.		GWh			% p.a.	
	2009	2008	2007	1 year	2 year	2009	2008	2007	1 year	2 year
<b>North Island</b>	22,775	22,664	22,406	0.5%	0.8%	1,952	1,917	1,995	1.9%	(1.1%)
<b>South Island excluding Tiwai</b>	8,771	8,789	8,265	(0.2%)	3.0%	790	791	778	(0.1%)	0.8%
<b>Total</b>	31,546	31,453	30,670	0.3%	1.4%	2,742	2,707	2,773	1.3%	(0.6%)

Source: SCADA data



## Contact Generation and Retail data

Data		Measure	The month ending 30 November 2009	The month ending 30 November 2008	5 months ended 30 November 2009	5 months ended 30 November 2008
Generation	Thermal generation	GWh	311	269	1,755	1,957
	Geothermal generation	GWh	179	180	977	957
	Hydro generation	GWh	279	308	1,480	1,364
	Total generation	GWh	769	757	4,212	4,279
	Average National wholesale electricity price <sup>1</sup>	\$/MWh	69.47	44.48	40.40	80.12
Retail Purchases	Total electricity purchases	GWh	599	638	3,404	3,656
	Average National electricity purchase price <sup>2</sup>	\$/MWh	75.81	49.41	44.21	95.19
Other	Retail electricity sales	GWh	585	605	3,316	3,466
	Gas used in internal generation	PJ	2.6	2.3	14.0	16.1
	Retail gas sales	PJ	0.3	0.3	1.8	1.9
	Wholesale gas sales	PJ	1.3	1.0	5.7	5.6
	LPG sales	tonnes	5,049	5,342	32,798	36,216

<sup>1</sup> This is the price received by Contact for its generation. It excludes contracts for differences.

<sup>2</sup> This price excludes contracts for differences.



## Additional Information – North Island and South Island Split

Data		Measure	The month ending 30 November 2009	The month ending 30 November 2008	5 months ended 30 November 2009	5 months ended 30 November 2008
Generation	Average North Island wholesale electricity price <sup>1</sup>	\$/MWh	70.30	47.69	45.54	81.16
	Average South Island wholesale electricity price <sup>1</sup>	\$/MWh	68.04	39.92	31.06	77.95
	Average National wholesale electricity price <sup>1</sup>	\$/MWh	69.47	44.48	40.40	80.12
Retail Purchases	North Island electricity purchases	GWh	339	340	1,895	1,935
	South Island electricity purchases	GWh	259	297	1,509	1,721
	Total electricity purchases	GWh	599	638	3,404	3,656
	Average North Island electricity purchase price <sup>2</sup>	\$/MWh	77.50	53.37	50.59	82.41
	Average South Island electricity purchase price <sup>2</sup>	\$/MWh	73.59	44.88	36.20	109.55
	Average National electricity purchase price <sup>2</sup>	\$/MWh	75.81	49.41	44.21	95.19

<sup>1</sup> This is the price received by Contact for its generation. It excludes contracts for differences.

<sup>2</sup> This price excludes contracts for differences.



## Customer numbers



	As at 30 November 2009	As at 31 October 2009	As at 30 November 2008
Electricity customer numbers	478,500	478,500	508,500
Gas customer numbers	65,500	65,500	72,500
LPG customer numbers (includes franchisees)	55,500	55,500	53,500

