

Briefing from Origin Energy as they begin the preliminary construction stage of Cullerin Range wind farm



Origin's Cullerin Range Wind Farm Project Manager Paul Bultitude, Communications Advisor Alanna Miles, and Development & Environmental Planner Katrina Neagle checking preliminary map gradients for the access roads.

Origin in the Community

Origin cares about the communities in which it operates. The company believes in maintaining open dialogue and a consultative approach to continue building effective partnerships. Origin is extremely pleased to be working with the people of the Upper Lachlan Shire Community to build this important wind farm project. During construction, up to 100 people will be engaged

in project activities in and around the site and the sourcing of some local labour, equipment, concrete and supplies will contribute to the district economy. Origin will base a team in the area to manage and coordinate the project. Specialist erection and commissioning teams will also be based locally during certain phases of the construction works. How can you find out more? Origin cares about the community and is keen to incorporate comments and feedback in developing the Cullerin Range Wind Farm. Over the coming months,

Origin will visit the area to learn more about the local community and hear what is important to you. Following this consultation, Origin will identify opportunities to work together.

Email us: cullerinrangewindfarm@originenergy.com.au

Write to us: Cullerin Range Wind Farm Project
GPO Box 5376
Sydney NSW 2001

Phone us: Origin Energy
Alanna Miles
1800 677 315

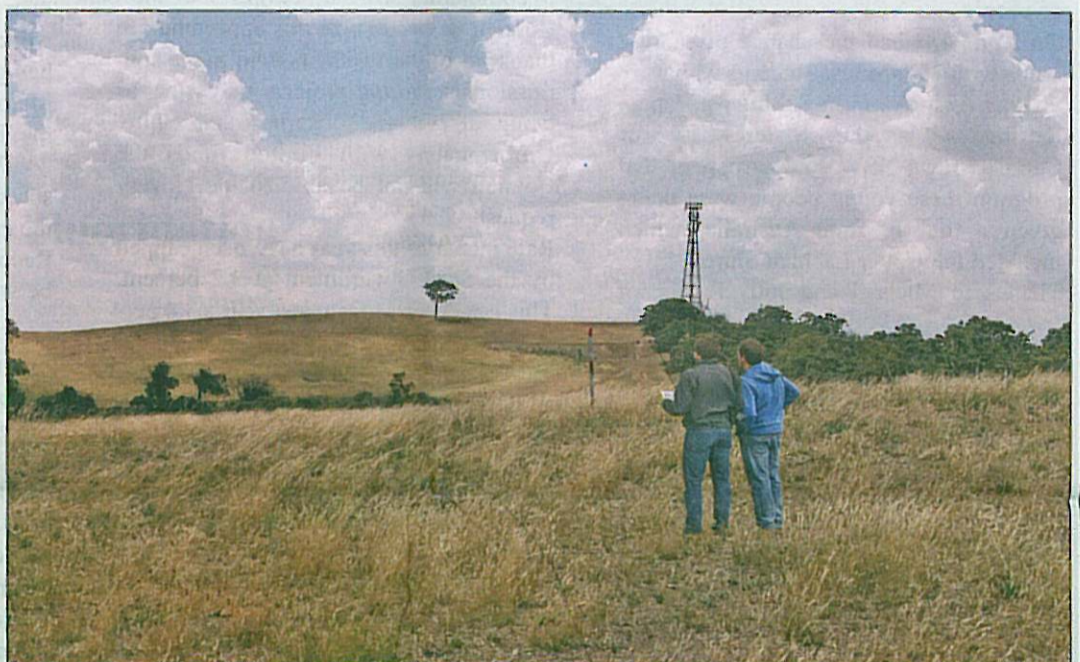
Origin Energy

Origin Energy is Australia's leading integrated energy company, with interests in oil and gas exploration and production, power generation and energy retailing. Origin is also Australia's leading green energy retailer, with over 360,000 customers signed to its Green energy products.

Origin is committed to building a sustainable energy future for

Australia. In 2007, it was recognised for its sustainability initiatives and leadership on climate change and named Ethical Investor's Sustainable Company of the Year for 2007.

For many years, Origin has been involved in the development of wind farms by purchasing the electricity generated. The Cullerin Range Wind Farm is an important project for Origin as it will be the company's first fully owned and operated wind farm.



Contractors from the turbine supplier checking Turbine sites for crane and hardstand sitings.



In February 2008, core samples were taken to establish geotechnical conditions for turbine foundations.

Project details

IN January 2008, Origin acquired the development rights from Epuron to build the 30 MW Cullerin Range Wind Farm located about 12 km east of Gunning on the Cullerin Range north of the Hume Highway.

The Cullerin Range Wind Farm will play an important role towards increasing the supply of renewable electricity generation in New South Wales and will help lower the state's greenhouse gas emissions. Cullerin Range is one of only a handful of locations which have all the right conditions for a wind farm:

- * Excellent wind resource – resulting in high green energy output
- * Low environmental impact
- * Direct access to NSW electricity grid
- * Safe road access
- * Environmentally aware community.

When completed, the wind farm will be able to produce enough clean, renewable electricity for almost 15,000 homes.

Project Status

When development approval was received from the NSW Government in February 2007, the project received the green light to move into the construction design phase. This then involved the selection of a suitable wind turbine and then computer mod-

elling of its capabilities against Cullerin Range's geography and wind data.

With this information confirmed, the 15 wind turbine sites were inspected and logged into a grid of GPS co-ordinates for use in establishing other requirements such as aviation lighting, telecommunication clearances and TV and radio assessments. Following the acquisition of the project in late January 2008, and the completion of the turbine purchase agreement, Origin representatives met with the Upper Lachlan Shire Council in February to introduce themselves and provide details on the project.

The project is now in the preliminary construction phase. This includes ground surveys to detail access points and routes, site amenity locations, and geotechnical works to determine ground conditions for construction.

Armed with this information, the detailed planning and design has commenced and contractors are in the process of determining detailed work requirements, including working out the logistics of preparing and installing the equipment.

The target for all of these activities will be finalised in May.

Time line

- June 2008 Initial site preparation
- Site access road construction
- Construction commences
- Jan 2009 Turbines arrive
- July 2009 Project commissioning

ADVERTORIAL