



# Origin Operational Review and Asset Visit

Presented by Grant King  
Managing Director

19-20 September, 2011



## Talinga Gas Processing Plant

- Site Tour:
  - Talinga Gas Plant, Gas Well, Reverse Osmosis Plant and Ponds
- Presentations:
  - Welcome and Tour Overview - Grant King
  - Upstream and Talinga Gas Processing Plant - Paul Zealand
  - Environment and Community - Ken Horton



## Darling Downs Power Station

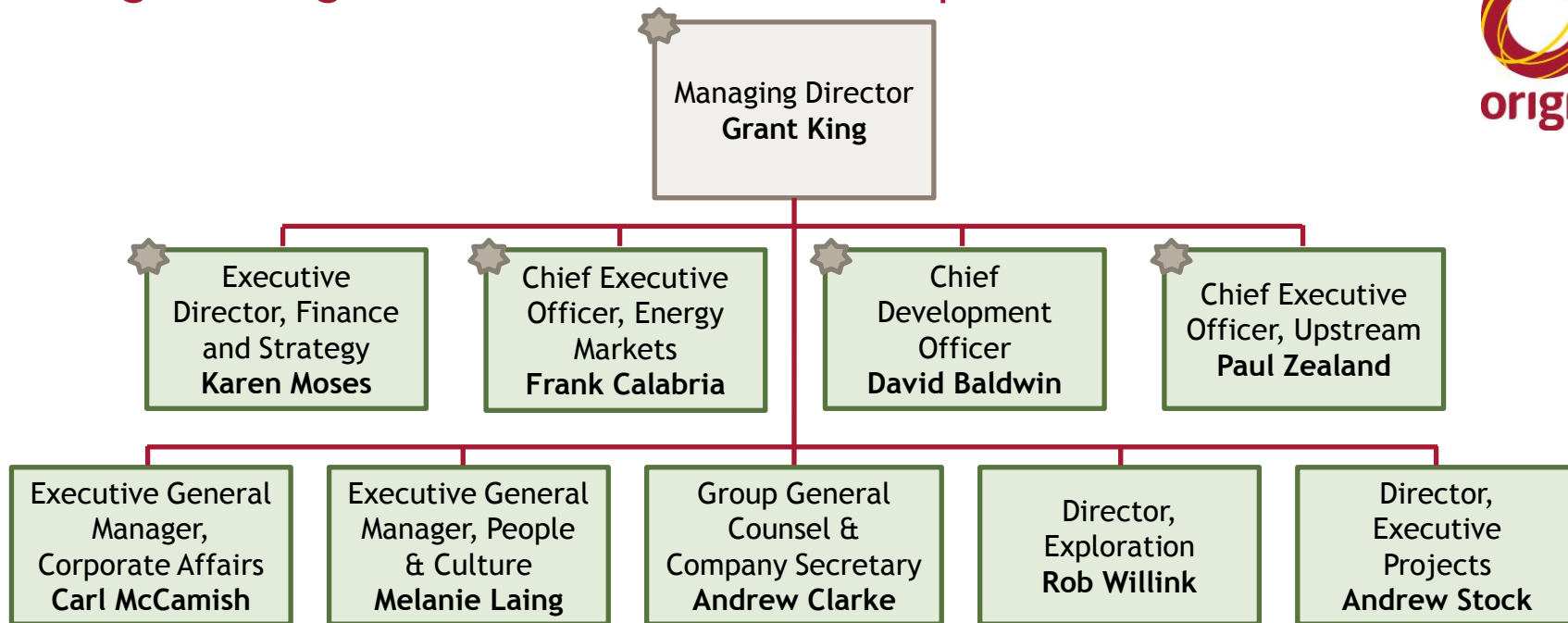
- Site Tour
  - Darling Downs Power Station
- Presentation:
  - Energy Markets - Frank Calabria
  - Darling Downs Power Station - Bill Renshaw



## Gladstone

- Site Tour
  - Boat trip to Curtis Island; APLNG Community Centre
- Presentation:
  - APLNG Project Overview - David Baldwin (delivered previous night)
  - APLNG, Phase 1 Implementation - Upstream - Janet Hann (delivered previous night)
  - APLNG, Phase 1 Implementation - Downstream - David Hayter

# The Origin Management Team & Site Tour Representatives



## ★ Development

- Janet Hann: General Manager, CSG/LNG Project
- Adrian Lang: Project Director
- David Hayter: Deputy Project Director, Downstream Project

## ★ Investor Relations and Corporate Communications:

- Angus Guthrie: Group Manager, Investor Relations
- Kylie Springall: Manager, Investor Communications
- Virly Natasunjaya: Personal Assistant, Investor Relations
- Ken Horton: Group Manager Corporate Affairs - Upstream Qld & CSG to LNG
- Lina Melero: General Manager, Corporate Communication

## ★ APLNG:

- Paul Diedrichs: Construction Superintendent
- Phillip Childers: HSE Manager

## ★ Energy Markets:

- David Smales: General Manager, Generation
- Bill Renshaw: Asset Operations Manager
- Tony Phillips: DDPS Plant Manager
- Michael Dignan: Production Manager
- Daniel Cole: Engineering Manager

## ★ Upstream:

- Justin Post: Group Manager, CSG Delivery
- Ross Evans: Manager Development & Appraisal, QLD CSG
- Andy Weir: Operations Superintendent
- Grant Hall: Field Supervisor
- Paul O'Meara: Plant Supervisor
- Ben Kadel: Operator

★ Attending part or all of the Site Tour

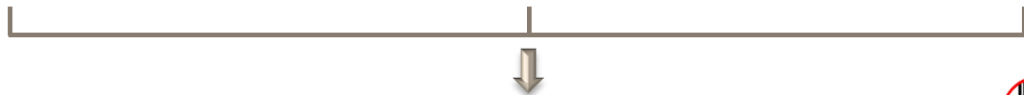
# APLNG is underpinned by a strong, aligned joint venture that combines Origin's leading position in Australian CSG development and ConocoPhillips' extensive LNG and CSG capabilities ...



- Australia's largest integrated energy company
- Listed in S&P/ASX 20
- Market capitalisation A\$15 billion (US\$16 billion)<sup>1</sup>

- Integrated energy company with global operations
- World's largest CSG operator with over 25 years' experience
- Market capitalisation US\$96 billion<sup>1</sup>

- Integrated energy and chemical company
- China's largest petroleum products supplier and second largest crude oil and natural gas producer
- Market capitalisation CNY615 billion (US\$96 billion)<sup>1</sup>



**Developer of CSG to LNG project based on Australia's largest CSG reserves base**



- 4.3 mtpa LNG off-take agreement for 20 years
- Ongoing negotiations with various buyers for further off-take



## UPSTREAM

- Operated by **Origin**
- Australia's longest history of CSG production, complemented by ConocoPhillips' 25 years' experience

## DOWNSTREAM

- Operated by **ConocoPhillips**
- 40 years' LNG experience
- Owner of Optimised Cascade® Process LNG technology

... to supply one of China's leading energy companies, Sinopec