

It's time to charge.

Your Origin ChargePass card is almost ready for action at any ChargePoint Networked Charging Station. Simply activate it by following the instructions inside.

To locate available charging stations, visit originenergy.com.au/evcharging



An Origin ChargePoint Charging Station

Together we can make a difference.™

Do you have any questions?

Visit originenergy.com.au/evcharging

or contact

Radford White

EV Development Manager
radford.white@originenergy.com.au

T: 03 9821 8032

M: 0417 142 751

CHARGEPOINT is a U.S. registered trademark and service mark, and CHARGEPASS is a trademark of Coulomb Technologies, Inc. All other brand names, product names, trademarks or service marks belong to their respective owners. Coulomb Technologies reserves the right to alter product offerings and specifications at any time without notice, and is not responsible for typographical or graphical errors that may appear in this document.

Origin Energy Electricity Limited ABN 33 071 052 287, Origin Energy LPG Limited ABN 77 000 508 369, Origin Energy Retail Limited ABN 22 078 868 425, Origin Energy (Vic) Pty Limited ABN 11 086 013 283 • Level 21, 360 Elizabeth Street, Melbourne VIC 3000 • Telephone 13 24 63 • originenergy.com.au • enquiry@originenergy.com.au

3140_Mar11_ALL

Proudly printed on:



Together we can make a difference.™



WELCOME TO THE ORIGIN CHARGEPOINT NETWORK!



YOUR ORIGIN CHARGE PASS IS INSIDE.

Together we can make a difference.™



WELCOME TO THE ORIGIN CHARGEPOINT NETWORK!



To start using the attached Origin ChargePass card at any ChargePoint Networked Charging Station, you need to activate it. To do this:

1. Go to originenergy.com.au/evcharging
2. Click on 'Register my ChargePass'
3. Choose 'ChargePoint sign up'
4. Follow the instructions

If you have any problems activating or using your Origin ChargePass card, call **1300 300 885**

Your Origin ChargePass card

Two Levels of Charging



Level 1 Charging

Use this method to charge at 240V / 15A by plugging your own charging cord into the charging station's outlet, located behind the station's locking door.

To start:

1. Plug your charging cord into the vehicle.
2. Hold your Origin ChargePass card over the station's lock image.

When your card is authorized, the display reads: "#1: AUTHORISED / DOOR UNLOCKED / LIFT DOOR INSERT PLUG"

IMPORTANT! Cords with clear or transparent plugs will not work.

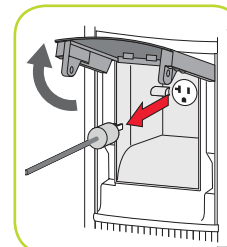
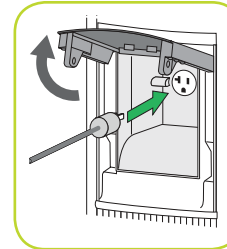
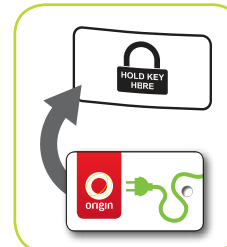
3. Lift the door and plug your charging cord into the socket.
4. Push the door closed to lock in place. Charging begins when the door locks.

The display reads "#1: CHARGING...".

To stop:

1. Hold the ChargePass card over the station's lock image.
2. Remove the cord from the station's socket.
3. Push the door closed to lock in place.

REMEMBER! Remove your cord from the vehicle and take it with you.



Level 2 Charging

Use this method to charge at 240V / 32A by plugging the charging station's SAE J1772™ connector into the vehicle.

To start:

1. Hold your Origin ChargePass card over the station's lock image.

When your card is authorised, the display reads: "#2: AUTHORISED / REMOVE CONNECTOR FROM HOLSTER AND PLUG INTO VEHICLE"

2. Remove the charging cord from its holster and plug it into the vehicle.

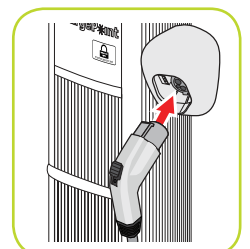
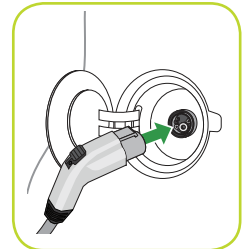
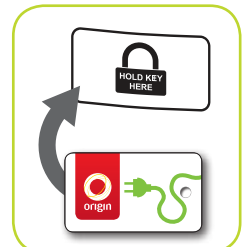
The display reads: "#2: CHARGING..."

To stop:

1. Hold the Origin ChargePass card over the station's lock image.

The display reads "#2: FINISHED / RETURN PLUG TO HOLSTER"

2. Return the station's plug to its holster.



IMPORTANT! You must use the same Origin ChargePass card to start and stop charging.

When you finish charging, the station displays charging details and the status of your Origin ChargePass card.